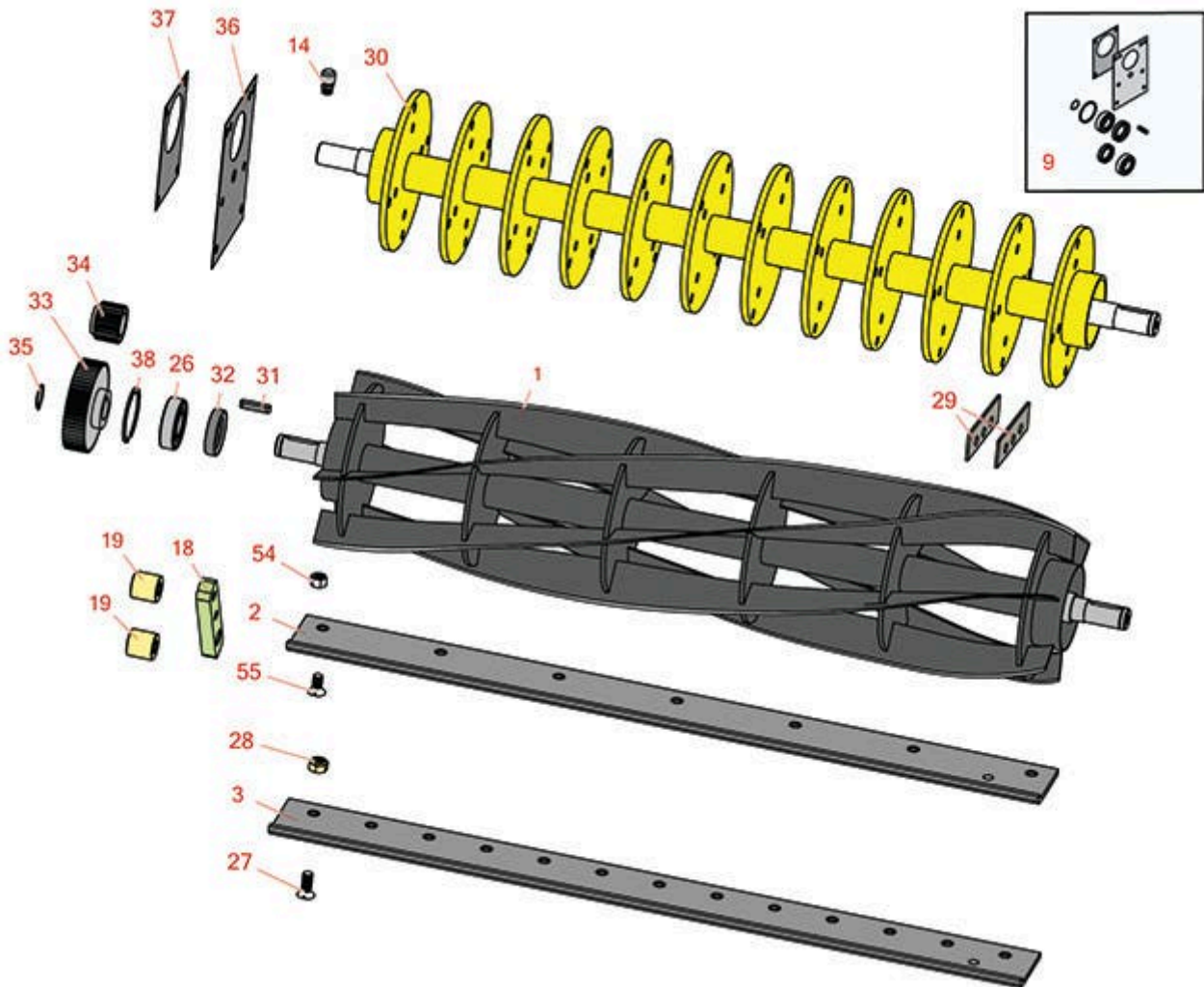




Replaces John Deere 3365 Hydraulic Gang Mower Parts

MK II Cutting Unit
Reel, Bedknife & V-Cut Reel



All original equipment manufacturers names and part numbers are used for identification purposes only, and we are in no way implying that our products are original equipment parts. Prices subject to change without notice.



Replaces John Deere 3365 Hydraulic Gang Mower Parts

MK II Cutting Unit
Reel, Bedknife & V-Cut Reel



Item No	R&R Part No.	OEM Part No.	Description	Qty Req	Order Quantity
---------	--------------	--------------	-------------	---------	----------------

R&R Reels, Lifetime Guaranteed

1	RAET10900	AET10425, AET10900, AMT2872, ET11308, ET13665	Reel - 6 Blade	1	
1	RAET10426	AET10426, AET10901, ET11310, ET13666	Reel - 8 Blade	1	
1	RAET10427	AET10427, ET11439, ET13667	Reel - 10 Blade	1	

R&R Bedknives, Lifetime Guaranteed

2	RET11434	ET11434	Bedknife - 7 Hole	1	
2	RET11540	ET11540, ET17951	Bedknife - 7 Hole Low Cut	1	
3	RET15739	ET15739	Bedknife - 13 Hole Standard	1	

Overhaul Kits

9	R100173		Overhaul Kit - Cutting Unit	0	
---	---------	--	-----------------------------	---	--

Tech Note: Includes 2 ea.:RA203605 Bearings; 1ea.: R1056 Snap Ring, RET10872 Gasket, RET10873 Gasket, RET11301 Key, RET13673 Seal, RET13674 Seal & RN123155 Snap Ring:

Other Parts Available

14	R302-14	JD5801	Fitting - Relief	1	
18	RET13688	ET13688	Bracket - Front Roller	2	
19	RET11414	ET11414	Spacer - Front Roller	4	
26	RA203605	ET10824	Bearing	2	
26	RJD7678	JD7678	Bearing	2	

All original equipment manufacturers names and part numbers are used for identification purposes only, and we are in no way implying that our products are original equipment parts. Prices subject to change without notice.



Replaces John Deere 3365 Hydraulic Gang Mower Parts

MK II Cutting Unit
Reel, Bedknife & V-Cut Reel



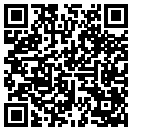
Item No	R&R Part No.	OEM Part No.	Description	Qty Req	Order Quantity
27	R19M5055	19M5055, 19M8551	Screw - Bedknife M10-1.5 x 25	13	
<i>Tech Note: Fits 13 Hole Bed Knife Only:</i>					
28	R14M7400	14M7400	Locknut - 10mm	13	
29	RET15712	ET15712	Verti-Cut Blade - Long	40	
<i>Tech Note: Fits Inside Discs:</i>					
29	RET15713	ET15713	Verti-Cut Blade - Short	8	
<i>Tech Note: Fits Outside Discs:</i>					
30	RET15302	ET15302	Shaft - V-Cut w/o Blades	1	
31	RET11301	ET11301	Key - 1/4 x 1/4 x 1-1/4	1	
32	RET13673	ET13673	Seal - Reel Motor End	1	
32	RET13674	ET13674	Seal - Reel	1	
33	RET11300	ET11300	Gear - Reel	1	
34	RET11299	ET11299	Gear - Hyd Motor	1	
35	R1056	ET11322, R26192	Ring - Snap Reel	1	
36	RET10872	ET10872	Gasket - Gear Case	1	
37	RET10873	ET10873	Gasket - Hyd Motor	1	
38	RN123155	N123155	Ring - Snap	1	
54	RET15804	ET15804	Locknut - 3/8-16 Top Lock	13	
<i>Tech Note: Fits 13 Hole Bed Knife Only:</i>					
55	R170555	ET11435	Screw - 3/8-16 x 3/4 Flat HD	7	
55	R190652		Screw - Regular - 3/8-16 x 1	7	

All original equipment manufacturers names and part numbers are used for identification purposes only, and we are in no way implying that our products are original equipment parts. Prices subject to change without notice.



Replaces John Deere 3365 Hydraulic Gang Mower Parts

*MK II Cutting Unit
Reel, Bedknife & V-Cut Reel*



All original equipment manufacturers names and part numbers are used for identification purposes only, and we are in no way implying that our products are original equipment parts. Prices subject to change without notice.