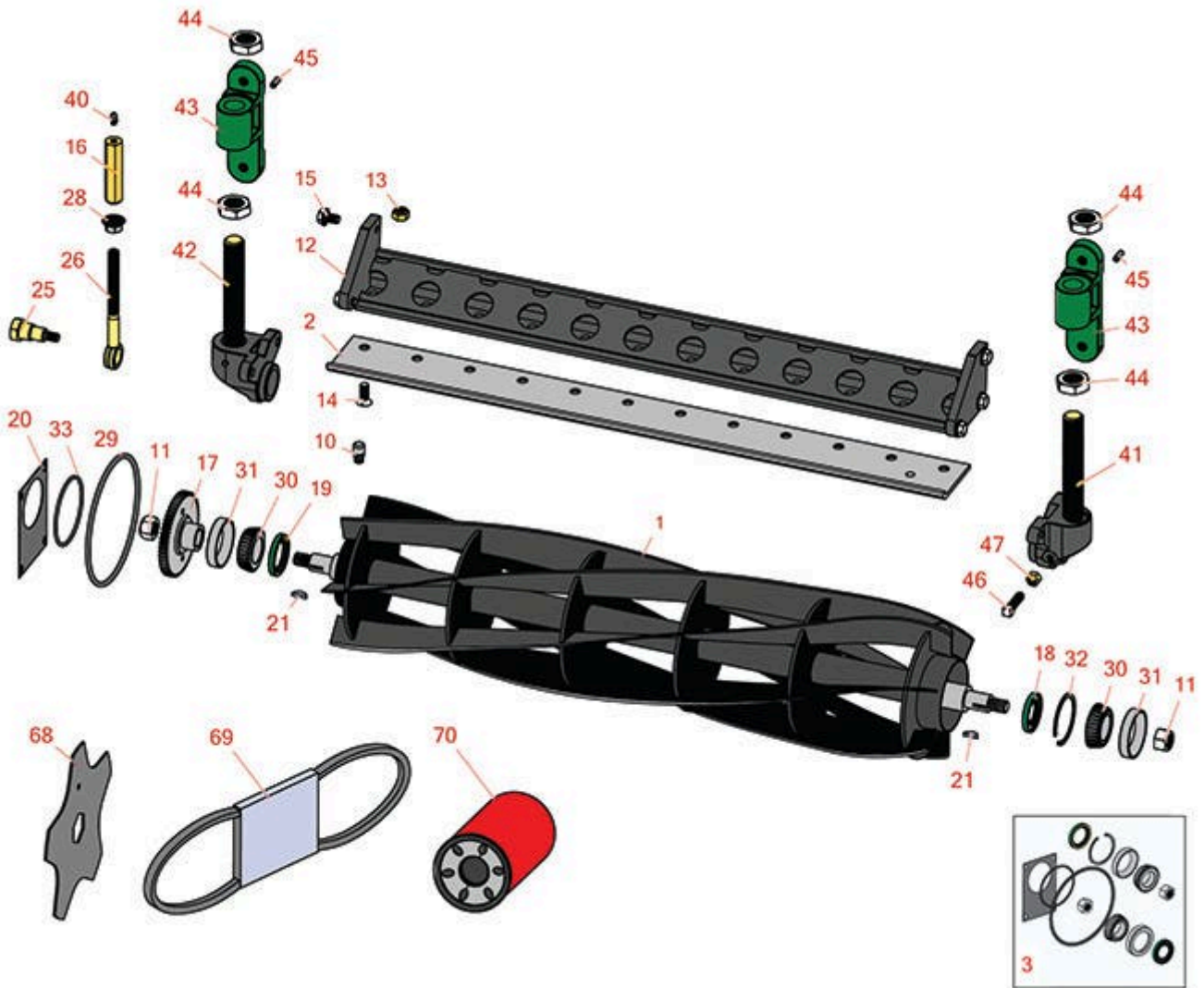




# Replaces John Deere 3365 Hydraulic Gang Mower Parts

ESP Cutting Unit  
Reel & Bedknife



All original equipment manufacturers names and part numbers are used for identification purposes only, and we are in no way implying that our products are original equipment parts. Prices subject to change without notice.



# Replaces John Deere 3365 Hydraulic Gang Mower Parts

ESP Cutting Unit  
Reel & Bedknife



Item No	R&R Part No.	OEM Part No.	Description	Qty Req	Order Quantity
---------	--------------	--------------	-------------	---------	----------------

## R&R Reels, Lifetime Guaranteed

1	<b>RAET10856</b>	AET10856, AMT2887	Reel - 6 Blade	1	
1	<b>RAET10857</b>	AET10857	Reel - 8 Blade	1	
1	<b>RAET10858</b>	AET10858	Reel - 10 Blade	1	

## R&R Bedknives, Lifetime Guaranteed

2	<b>RET16755</b>	ET16755	Bedknife - Low Cut 3/8	1	
2	<b>RET16756</b>	ET16756	Bedknife - Standard 1/2	1	

## Overhaul Kits

3	<b>R100171</b>		Overhaul Kit - Cutting Unit	0	
---	----------------	--	-----------------------------	---	--

*Tech Note: Includes 2 ea.: RJD8225 Bearing Cups, RJD8187 Bearing Cones & RA31869 Locknuts; 1 ea.: RM18237 Snap Ring, RAP19509 Seal, RU10776 O-Ring, RET10873 Gasket, RH88900 O-Ring & RAN121759 Seal:*

## Other Parts Available

10	<b>R302-14</b>	JD5801	Fitting - Relief	1	
11	<b>RA31869</b>	A31869	Locknut - Reel	2	
12	<b>RAET10829</b>	AET10829	Backing Bar - Bed Knife	1	
13	<b>R14M7400</b>	14M7400	Locknut - 10mm	12	
14	<b>R19M5055</b>	19M5055, 19M8551	Screw - Bedknife M10-1.5 x 25	12	
15	<b>R19M7783</b>	19M7783	Screw - Bed Bar Mount	6	
16	<b>RAET10880</b>	AET10880, AMT2965	Adjuster - Reel	2	
17	<b>RAET11211</b>	AET11211	Gear - Reel Includes Brg	1	

All original equipment manufacturers names and part numbers are used for identification purposes only, and we are in no way implying that our products are original equipment parts. Prices subject to change without notice.



# Replaces John Deere 3365 Hydraulic Gang Mower Parts

ESP Cutting Unit  
Reel & Bedknife



Item No	R&R Part No.	OEM Part No.	Description	Qty Req	Order Quantity
18	<b>RAN121759</b>	AN121759	Seal	1	
19	<b>RAP19509</b>	AP19509	Seal	1	
20	<b>RET10873</b>	ET10873	Gasket - Hyd Motor	1	
21	<b>R26H76</b>	26H76	Key - Woodruff Reel	2	
25	<b>RET16896</b>	ET16896	Bolt - Shoulder	2	
26	<b>RET16897</b>	ET16897	Eyebolt	2	
28	<b>RET17361</b>	ET17361	Nut - Flanged Eyebolt	2	
29	<b>RH88900</b>	H88900	O-Ring - Gear Case Cover	1	
30	<b>RJD8187</b>	JD8187	Tapered Bearing Cone	2	
31	<b>RJD8225</b>	JD8225	Tapered Bearing Cup	2	
32	<b>RM18237</b>	M18237	Ring - Snap	1	
33	<b>RU10776</b>	U10776	O-Ring	1	
40	<b>R302-5</b>	JD7797, JD7842, JD7844	Fitting - Grease	2	
41	<b>RAET10854</b>	AET10854	Adjuster - Roller Oblong Hole	2	
42	<b>RAET10855</b>	AET10855	Adjuster - Roller Round Hole	2	
43	<b>RAET10877</b>	AET10877	Support - Roller	4	
44	<b>R14M7240</b>	14M7240	Nut - 24mm x 3.0 Fin Hex Jam	8	
45	<b>RR30587</b>	30587, R30587	Pin - Dowell 1/4 Dia. x .75	4	
46	<b>RMT49</b>	MT49	Screw - Set 10mm x 1.5 x 35mm Sh	2	
47	<b>RM82222</b>	M82222	Locknut	2	

All original equipment manufacturers names and part numbers are used for identification purposes only, and we are in no way implying that our products are original equipment parts. Prices subject to change without notice.



# Replaces John Deere 3365 Hydraulic Gang Mower Parts

*ESP Cutting Unit  
Reel & Bedknife*



Item No	R&R Part No.	OEM Part No.	Description	Qty Req	Order Quantity
68	<b>RET17647</b>	ET17647	Blade - Vertical Mower	0	
68	<b>RET17647C</b>		Verti-Cut Blade - Carbide Tipped	0	
69	<b>RM801821</b>	M801821	Belt - Engine Fan	1	
70	<b>RAT120444</b>	AT120444	Filter - Hyd Oil w/Gasket	1	

All original equipment manufacturers names and part numbers are used for identification purposes only, and we are in no way implying that our products are original equipment parts. Prices subject to change without notice.