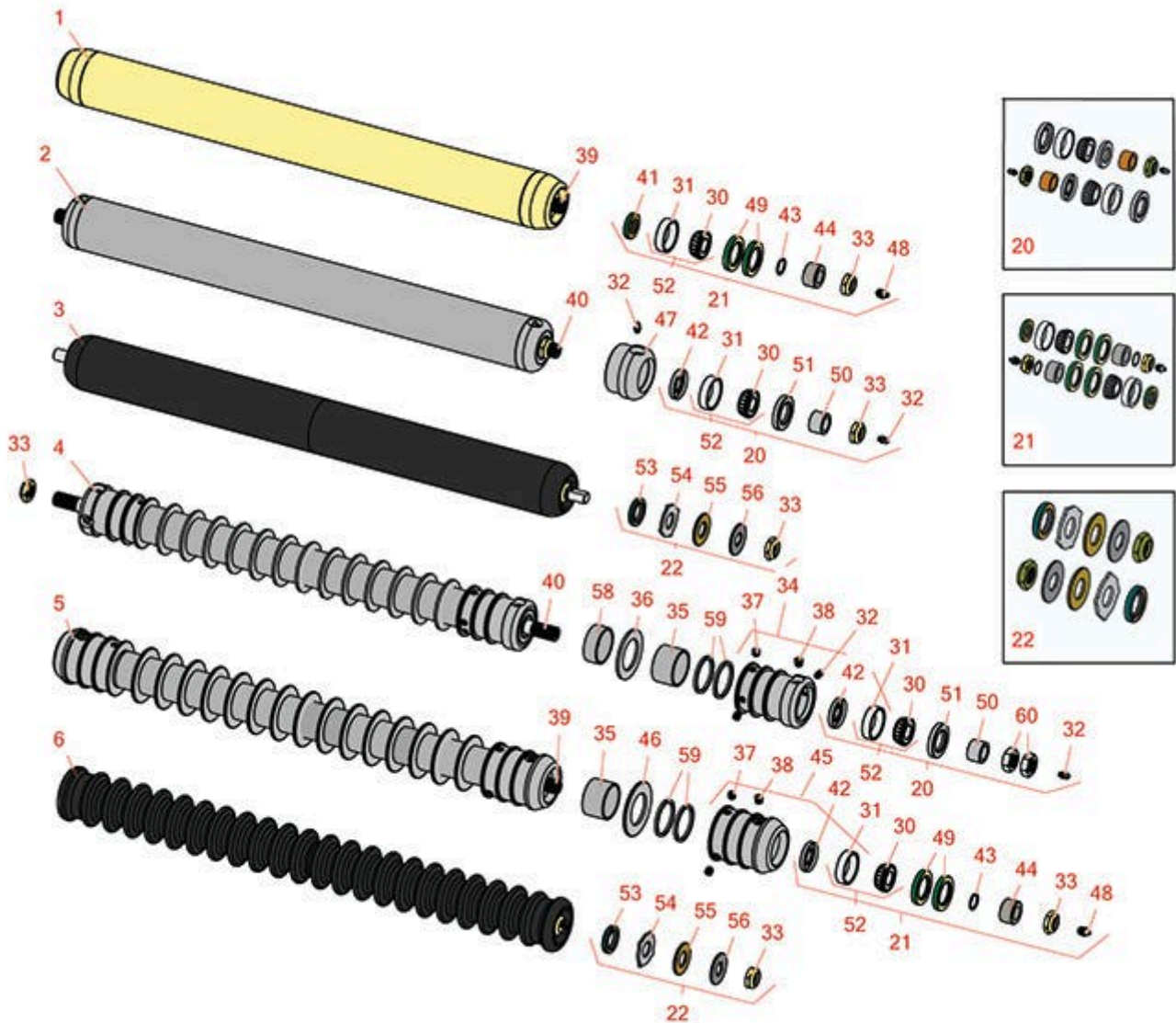




Replaces John Deere 303 Hydraulic Gang Mower Parts

MK II Cutting Unit
Rollers



All original equipment manufacturers names and part numbers are used for identification purposes only, and we are in no way implying that our products are original equipment parts. Prices subject to change without notice.



Replaces John Deere 303 Hydraulic Gang Mower Parts

MK II Cutting Unit
Rollers



Item No	R&R Part No.	OEM Part No.	Description	Qty Req	Order Quantity
---------	--------------	--------------	-------------	---------	----------------

R&R Rollers

1	RAET10443	AET10443	Roller - Smooth Tubular Steel	0	
<i>Detail Description: Constructed with a through shaft, this heavy duty roller uses greasable tapered bearings for extended life.:</i>					
2	R500505		Roller - Smooth Tubular Steel	0	
<i>Detail Description: Constructed with a through shaft, this heavy duty roller uses greasable tapered bearings for extended life.:</i>					
3	R1203610		Roller - Smooth UHMW Polyethylene	0	
<i>Detail Description: Machined from solid UHMW, this low maintenance roller uses a 1" solid stainless steel shaft and requires no grease. UHMW material prevents build-up of debris.:</i>					
4	R500500R		Roller - Grooved Repairable Steel	0	
<i>Detail Description: Constructed with a through shaft and greasable ball bearings, this roller can be repaired by unscrewing the ends and replacing the series of washers and spacers.:</i>					
5	R500507		Roller - Grooved Repairable Steel	0	
<i>Detail Description: Constructed with a through shaft and greasable ball bearings, this roller can be repaired by unscrewing the ends and replacing the series of washers and spacers.:</i>					
6	R1203700		Roller - Grooved UHMW Polyethylene	0	
<i>Detail Description: Machined from solid UHMW, this low maintenance roller rotates around a 1" solid stainless steel shaft and requires no bearings or grease. Patented groove design and smooth UHMW material prevents build-up of debris.:</i>					

Overhaul Kits

20	R100135		Overhaul Kit - Roller	0	
<i>Detail Description: Includes 2 ea.:R302-5 Grease Fittings, R253-122 Seals, R253-117 Seals, R150674 Wear Sleeves, R254-78 Bearings, R254-79 Bearing Cups, & R3296-15 Locknuts:</i>					
21	RAET10632	AET10632	Overhaul Kit - Roller	0	

All original equipment manufacturers names and part numbers are used for identification purposes only, and we are in no way implying that our products are original equipment parts. Prices subject to change without notice.



Replaces John Deere 303 Hydraulic Gang Mower Parts

MK II Cutting Unit
Rollers



Item No	R&R Part No.	OEM Part No.	Description	Qty Req	Order Quantity
---------	--------------	--------------	-------------	---------	----------------

Detail Description: Includes 4 ea: RET15755 Seal; 2 ea: R237-54 O-Ring, R253-122 Seal, R254-78 Bearing, R254-79 Cup, R3296-15 Locknut, R471219 Grease Zerk, RET15726 Sleeve, RET15756 Seal:

22	R101399		Overhaul Kit - UHMW 2 Pc Roller	1
----	----------------	--	---------------------------------	---

Detail Description: Fits all R&R 2-1/2" - 3-1/2" Dia. Black UHMW Plastic Rollers that do not use ball bearings.. Includes 2 ea.: R1503230 Star Washers, R1503470 Seals, R150333 Thrust Washers, R3296-15 Locknuts, R1503471 Bronze Thrust Washers:

Other Parts Available

30	R254-78	JD8188	Tapered Bearing Cone	2
----	----------------	--------	----------------------	---

31	R254-79	JD8226	Cup - Bearing	2
----	----------------	--------	---------------	---

Detail Description: Use R254-79M installation mandrel to properly install race.:

32	R302-5	JD7797, JD7842, JD7844	Fitting - Grease	2
----	---------------	------------------------------	------------------	---

33	R3296-15	N101345	Locknut - 3/4-16 Nylon Jam	2
----	-----------------	---------	----------------------------	---

34	R150670		Roller End - 2-3/4 Threaded	2
----	----------------	--	-----------------------------	---

35	R150671		Spacer - 2 3/4 / 3 Rollers 13/16 L	0
----	----------------	--	------------------------------------	---

35	R150676		Spacer - 2-3/4 Dia x 1-1/4 L	0
----	----------------	--	------------------------------	---

36	R150672		Washer - 2-3/4 Roller	14
----	----------------	--	-----------------------	----

37	R150691		Screw - Set Nyloc 3/8-16 x 3/8	4
----	----------------	--	--------------------------------	---

38	R170714	E14814	Fitting - Pressure Relief	2
----	----------------	--------	---------------------------	---

39	RET15758	ET15758	Shaft - Roller	1
----	-----------------	---------	----------------	---

Detail Description: 12mm hole in shaft end:

40	R500502		Shaft - Grooved Roller	1
----	----------------	--	------------------------	---

Detail Description: 12mm hole in shaft end:

All original equipment manufacturers names and part numbers are used for identification purposes only, and we are in no way implying that our products are original equipment parts. Prices subject to change without notice.



Replaces John Deere 303 Hydraulic Gang Mower Parts

MK II Cutting Unit
Rollers



Item No	R&R Part No.	OEM Part No.	Description	Qty Req	Order Quantity
41	RET15756	ET15756, MT1739, MT739	Seal	2	
42	R253-122	253-122	Seal	2	
43	R237-54	U46731, U6731	O-Ring - Small	2	
44	RET15726	ET15726, RET15726	Sleeve - Wear Hardened	2	
45	R500511		Roller End - Threaded 3	2	
46	R150673		Washer - 3 Repairable Roller	15	
47	R5-4035		Roller End - 2-7/8 OD	2	
48	R471219	471219, 471231, JD7759, JD7798	Zerk - Grease	2	
49	RET15755	ET15755	Seal - Oil	4	
50	R150674		Sleeve - Wear 3/4 Plated	2	
51	R253-117		Seal - Outer Triple Lip	2	
52	R500534		Bearing - with Cup	2	
<i>Detail Description: Kit includes: 1 ea R254-78- Bearing Cone & R254-79 Bearing Cone:</i>					
53	R1503470		Seal - Inner Wiper	2	
54	R1503230		Washer - Thrust Outer Keyed	2	
55	R1503471		Washer - Thrust SAE660 Bronze	2	
56	R150333		Washer - Flat Keyed Outer SS	2	
58	R150678		Spacer - Grooved Roller 3/4	1	

All original equipment manufacturers names and part numbers are used for identification purposes only, and we are in no way implying that our products are original equipment parts. Prices subject to change without notice.



Replaces John Deere 303 Hydraulic Gang Mower Parts

*MK II Cutting Unit
Rollers*



Item No	R&R Part No.	OEM Part No.	Description	Qty Req	Order Quantity
59	R150676A		Spacer - 1/8	2	
60	R3220-7	3220-7	Nut - 3/4-16 Jam Zinc	2	

All original equipment manufacturers names and part numbers are used for identification purposes only, and we are in no way implying that our products are original equipment parts. Prices subject to change without notice.