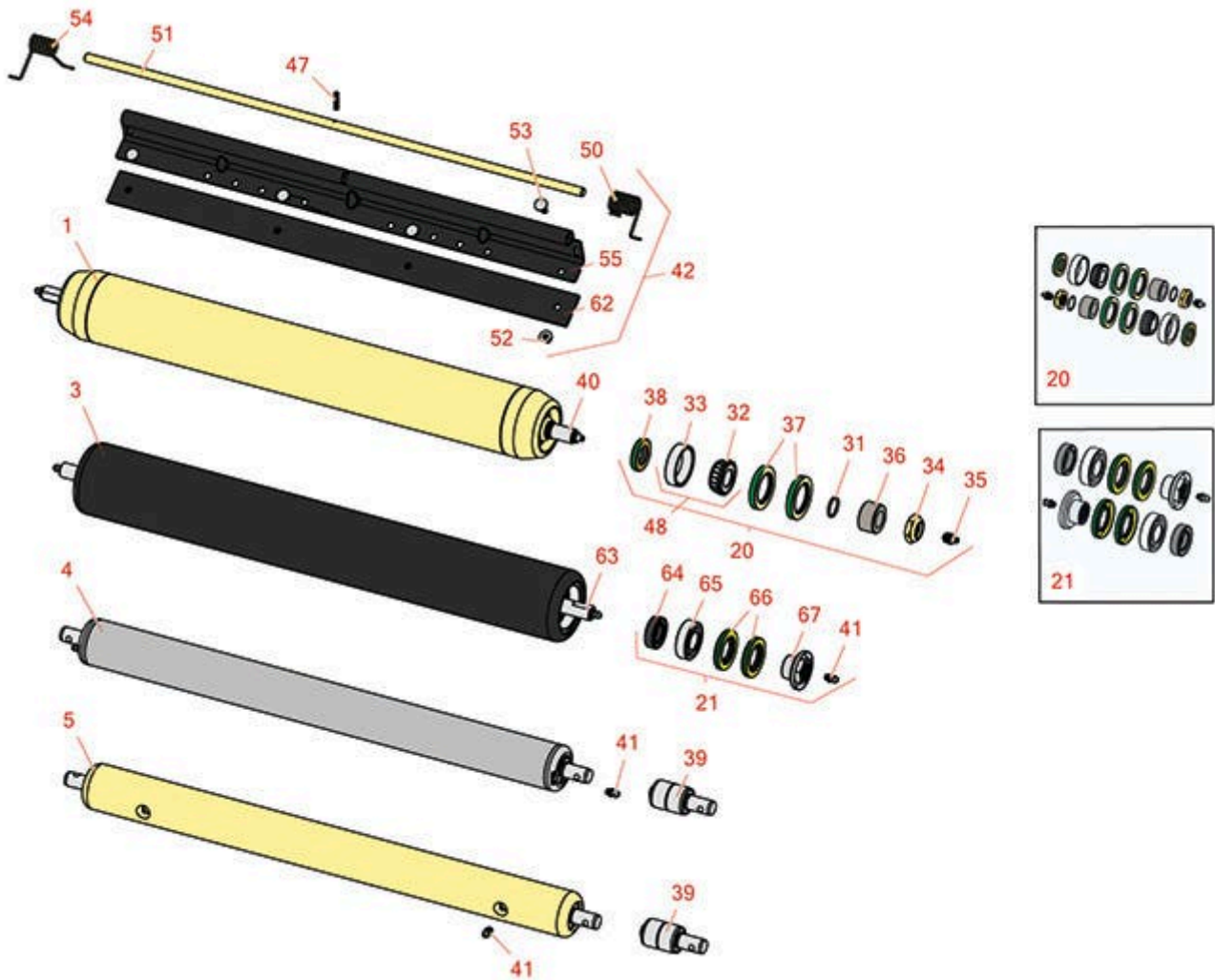




# Replaces John Deere 3235B Reel Mower

## Parts

Heavy Cutting Unit  
Rear Rollers



All original equipment manufacturers names and part numbers are used for identification purposes only, and we are in no way implying that our products are original equipment parts. Prices subject to change without notice.



# Replaces John Deere 3235B Reel Mower

## Parts

Heavy Cutting Unit  
Rear Rollers



Item No	R&R Part No.	OEM Part No.	Description	Qty Req	Order Quantity
---------	--------------	--------------	-------------	---------	----------------

### R&R Rear Rollers

1	<b>RAET11263</b>	AET11263, AMT2967	Roller - Smooth Tubular Steel	0	
---	------------------	----------------------	-------------------------------	---	--

*Tech Note: Constructed with a through shaft, this heavy duty roller uses greasable tapered bearings for extended life.:*

3	<b>R1203825</b>		Roller - Fusion Smooth UHMW Polyethylene	0	
---	-----------------	--	--	---	--

*Tech Note: Fusion Rollers combine the best features of our UHMW plastic rollers with a heavy-duty internal bearing system. Machined from solid UHMW plastic that prevents build-up of debris. This roller turns on precision stainless ball bear... <Click Part# for more>:*

4	<b>RAET10111</b>	AET10111, AMT2876	Roller - Smooth Tubular Steel	0	
---	------------------	----------------------	-------------------------------	---	--

*Tech Note: This tubular steel roller uses greasable "water-pump" style bearings.:*

5	<b>RAMT1442</b>	AMT1442, AMT2878	Roller - Smooth Solid Steel	0	
---	-----------------	---------------------	-----------------------------	---	--

*Tech Note: Machined from solid steel, this heavy weight roller uses greasable "water-pump" style bearings.:*

### Overhaul Kits

20	<b>RAET10632</b>	AET10632	Overhaul Kit - Roller	0	
----	------------------	----------	-----------------------	---	--

*Tech Note: Includes 4 ea: RET15755 Seal; 2 ea: R237-54 O-Ring, R253-122 Seal, R254-78 Bearing, R254-79 Cup, R3296-15 Locknut, R471219 Grease Zerk, RET15726 Sleeve, RET15756 Seal:*

21	<b>R114-5430</b>		Overhaul Kit - Roller	0	
----	------------------	--	-----------------------	---	--

*Tech Note: Includes 4 ea.: R112-7494 Seals; 2 ea.: R302-5 Grease Zerks, R114-3717 Seals, R112-5290 Bearings & R114-3745 Locknuts:*

### Other Parts Available

31	<b>R237-54</b>	U46731, U6731	O-Ring - Small	2	
----	----------------	------------------	----------------	---	--

32	<b>R254-78</b>	JD8188	Tapered Bearing Cone	2	
----	----------------	--------	----------------------	---	--

All original equipment manufacturers names and part numbers are used for identification purposes only, and we are in no way implying that our products are original equipment parts. Prices subject to change without notice.



# Replaces John Deere 3235B Reel Mower

## Parts

Heavy Cutting Unit  
Rear Rollers



Item No	R&R Part No.	OEM Part No.	Description	Qty Req	Order Quantity
33	<b>R254-79</b>	JD8226	Cup - Bearing	2	
<i>Tech Note: Use R254-79M installation mandrel to properly install race.:</i>					
34	<b>R3296-15</b>	N101345	Locknut - 3/4-16 Nylon Jam	2	
35	<b>R471219</b>	471219, JD7759, JD7798	Zerk - Grease	2	
36	<b>RET15726</b>	ET15726, RET15726	Sleeve - Wear Hardened	2	
37	<b>RET15755</b>	ET15755	Seal - Oil	4	
38	<b>RET15756</b>	ET15756, MT1739, MT739	Seal	2	
38	<b>R253-122</b>	253-122	Seal	2	
39	<b>RAA35741</b>	AA35741, AET10129, TCA22836	Bearing	2	
<i>Tech Note: 1/4" Side Hole:</i>					
40	<b>RET17515</b>	ET17515	Shaft - Roller	1	
41	<b>R302-5</b>	JD7797, JD7842, JD7844	Fitting - Grease	2	
42	<b>RBM17684</b>	BM17684	Scraper Kit - Solid Roller SET/5	1	
<i>Tech Note: Includes 20 ea: R03M7221 Bolt, R14M7303 Nut; 5 ea: R34M7010 Pin, R500571 Scraper Bar, RET17629 LH Spring, RET17630 RH Spring, RET17757 Pin, RMT2595 Scraper Blade:</i>					
47	<b>R34M7010</b>	34M7010	Pin - Spring	5	
48	<b>R500534</b>		Bearing - with Cup	0	
50	<b>RET17629</b>	ET17629	Spring - Torsion LH	5	

All original equipment manufacturers names and part numbers are used for identification purposes only, and we are in no way implying that our products are original equipment parts. Prices subject to change without notice.



# Replaces John Deere 3235B Reel Mower

## Parts

*Heavy Cutting Unit  
Rear Rollers*



Item No	R&R Part No.	OEM Part No.	Description	Qty Req	Order Quantity
51	<b>RET17757</b>	ET11757, ET17757	Pin - Scraper	5	
52	<b>R14M7303</b>	14M7303	Nut - 6mm x 1.0 Flanged	15	
53	<b>R03M7221</b>	03M7221	Bolt - Carriage M6 x 16	15	
54	<b>RET17630</b>	ET17630	Spring - Torsion RH	5	
55	<b>R500571</b>	MT2369	Bar - Scraper	5	
62	<b>RMT2595</b>	MT2595, MT2895	Scraper Blade - Solid Roller	1	
63	<b>R1203821</b>		Shaft - Fusion Roller	1	
64	<b>R114-3717</b>		Seal	2	
65	<b>R112-5290</b>		Bearing - Stainless	2	
66	<b>R112-7494</b>		Seal	4	
67	<b>R114-3745</b>		Locknut - Bearing - Stainless	2	

All original equipment manufacturers names and part numbers are used for identification purposes only, and we are in no way implying that our products are original equipment parts. Prices subject to change without notice.