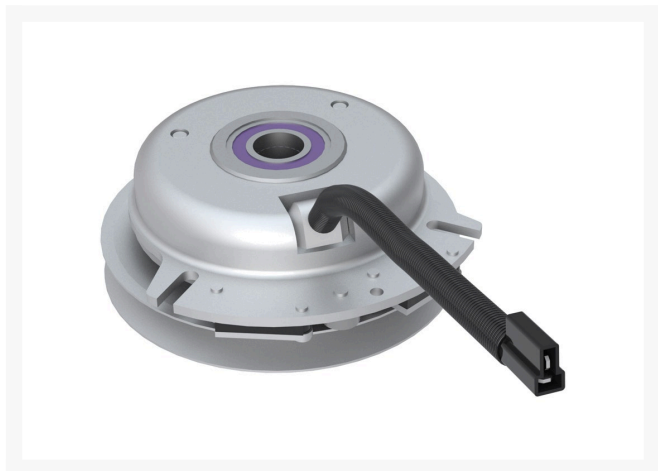




Clutch - Xtreme Pto Clutch

R130-1849X



Details

Xtreme Clutches feature machined pulleys, Cool Coil technology, high performance bearings, stainless steel straps and rivets, Xtreme's Tough Wire Protection System and a replaceable bearing, the Xtreme design is pure performance in every aspect.

- Machined Pulleys - CNC machined billet pulleys are stronger, quieter, smoother and maintain stable and faster blade speeds.
- Fatboy Bearings - Increased the size of the pulley bearing to improve bearing life.
- High Temp Bearing - Xtreme's special blend of bearing grease is rated more than two times what is required, delivering Xtreme bearing life.
- Triple Protected Wires - Every Xtreme clutch has an integrated watertight connection with three layers of protection.
- Replaceable Bearing - Xtreme mower clutches have a replaceable pulley bearing!
- Stainless Steel Rivets - Xtreme clutches use tough stainless steel brake rivets for long and safe service
- Xtreme "Cool Coil" - The "Xtremely Cool Coil" runs over 20% cooler. Electromagnetic clutches run very hot. Most competitive clutches run around 220 degrees. The Xtreme proprietary composite coil runs 175 degrees. The difference is simple: Less heat = ex

Replaces

Toro

130-1849

Evergreen

C/. Bartomeu Amat, 2, Entlo 1 Terrassa, 08225
+34 931 130 054

<https://evergreen.rrproducts.com/>



Clutch - Xtreme Pto Clutch

R130-1849X



Specifications

Manufacturer

Xtreme Equipment

Fits Models

Toro GrandStand Mower

Evergreen

C/. Bartomeu Amat, 2, Entlo 1 Terrassa, 08225
+34 931 130 054

<https://evergreen.rrproducts.com/>