

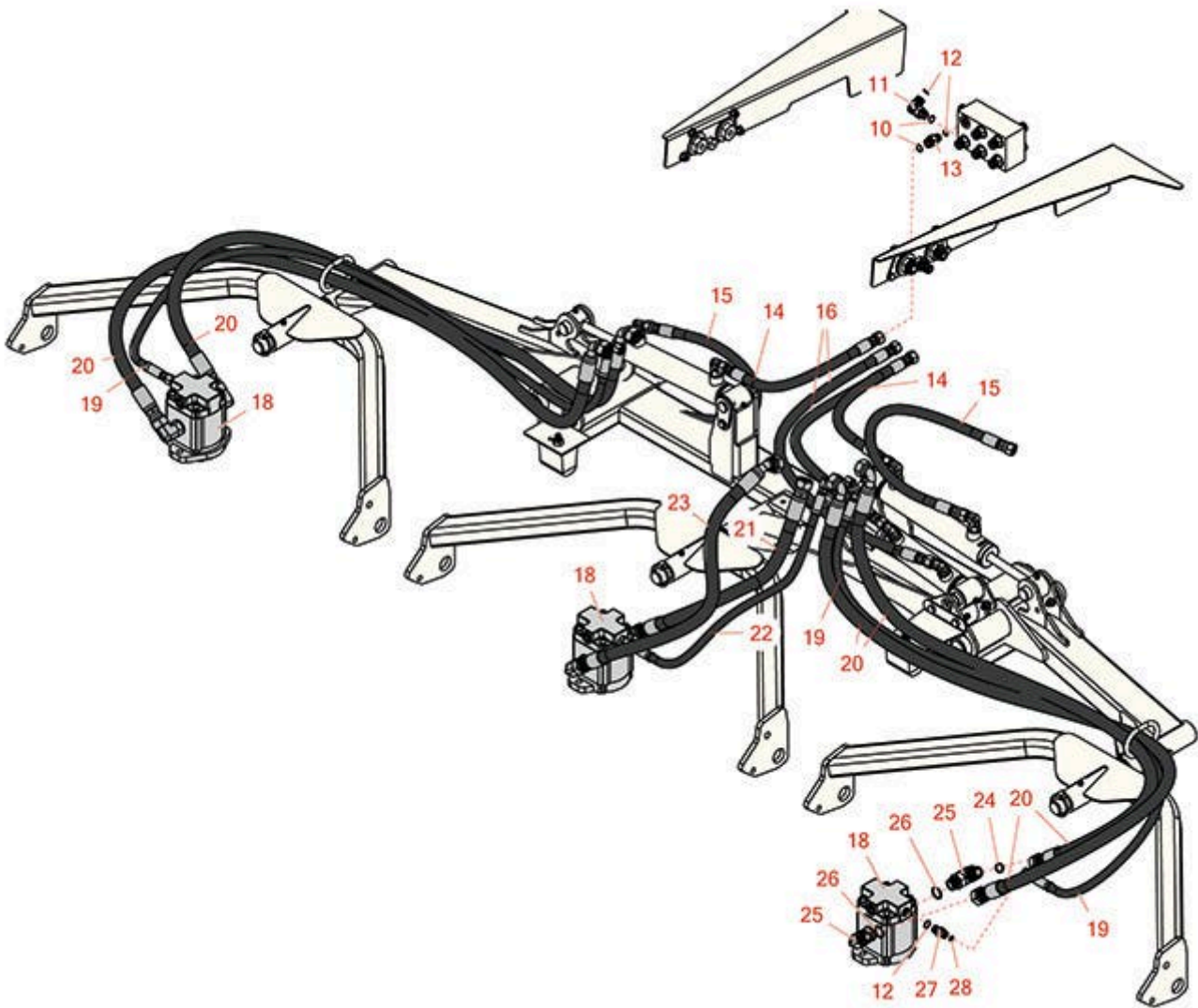


# Replaces Toro Groundsmaster 4500-D

## Parts

Rotary Mower - Model 30856

Front Lift Arm Hydraulics



All original equipment manufacturers names and part numbers are used for identification purposes only, and we are in no way implying that our products are original equipment parts. Prices subject to change without notice.



# Replaces Toro Groundsmaster 4500-D Parts

Rotary Mower - Model 30856  
Front Lift Arm Hydraulics



Item No	R&R Part No.	OEM Part No.	Description	Qty Req	Order Quantity
---------	--------------	--------------	-------------	---------	----------------

## Hoses

14	<b>R104-5512</b>	104-5512	Hydraulic Hose Assy	2	
15	<b>R104-5513</b>	104-5513	Hydraulic Hose Assy	2	
16	<b>R104-5511</b>	104-5511	Hydraulic Hose Assy	2	
19	<b>R104-5500</b>	104-5500	Hydraulic Hose Assy	2	
20	<b>R104-5501</b>	104-5501	Hydraulic Hose Assy	4	
21	<b>R104-5505</b>	104-5505	Hydraulic Hose Assy	1	
22	<b>R104-5502</b>	104-5502	Hydraulic Hose Assy	1	
23	<b>R104-5504</b>	104-5504	Hydraulic Hose Assy	1	

## Other Parts Available

10	<b>R237-42</b>	237-42, 31-4160	O-Ring	10	
11	<b>R340-77</b>	340-100, 340-77, 95-7889	Hydraulic Fitting	1	
12	<b>R237-22</b>	107-8844, 237-22, 237-78	O-Ring	14	
13	<b>R340-2</b>	340-2, 60-1920	Hydraulic Fitting - Striaight	9	
18	<b>R117-5141</b>	105-9820, 105-9872, 117-5141	Hydraulic Motor	3	
24	<b>R237-65</b>	237-65, 237.65	O-Ring	6	
25	<b>R340-17</b>	340-17	No 10 Male Orfs x No 10 Male Orb	6	

All original equipment manufacturers names and part numbers are used for identification purposes only, and we are in no way implying that our products are original equipment parts. Prices subject to change without notice.



# Replaces Toro Groundsmaster 4500-D Parts

*Rotary Mower - Model 30856  
Front Lift Arm Hydraulics*



Item No	R&R Part No.	OEM Part No.	Description	Qty Req	Order Quantity
26	<b>R237-80</b>	237-80, 327-80	O-Ring	6	
27	<b>R340-92</b>	340-92	Hydraulic Fitting - Striaight	3	
28	<b>R237-21</b>	237-21, 327-21	O-Ring	3	

All original equipment manufacturers names and part numbers are used for identification purposes only, and we are in no way implying that our products are original equipment parts. Prices subject to change without notice.