

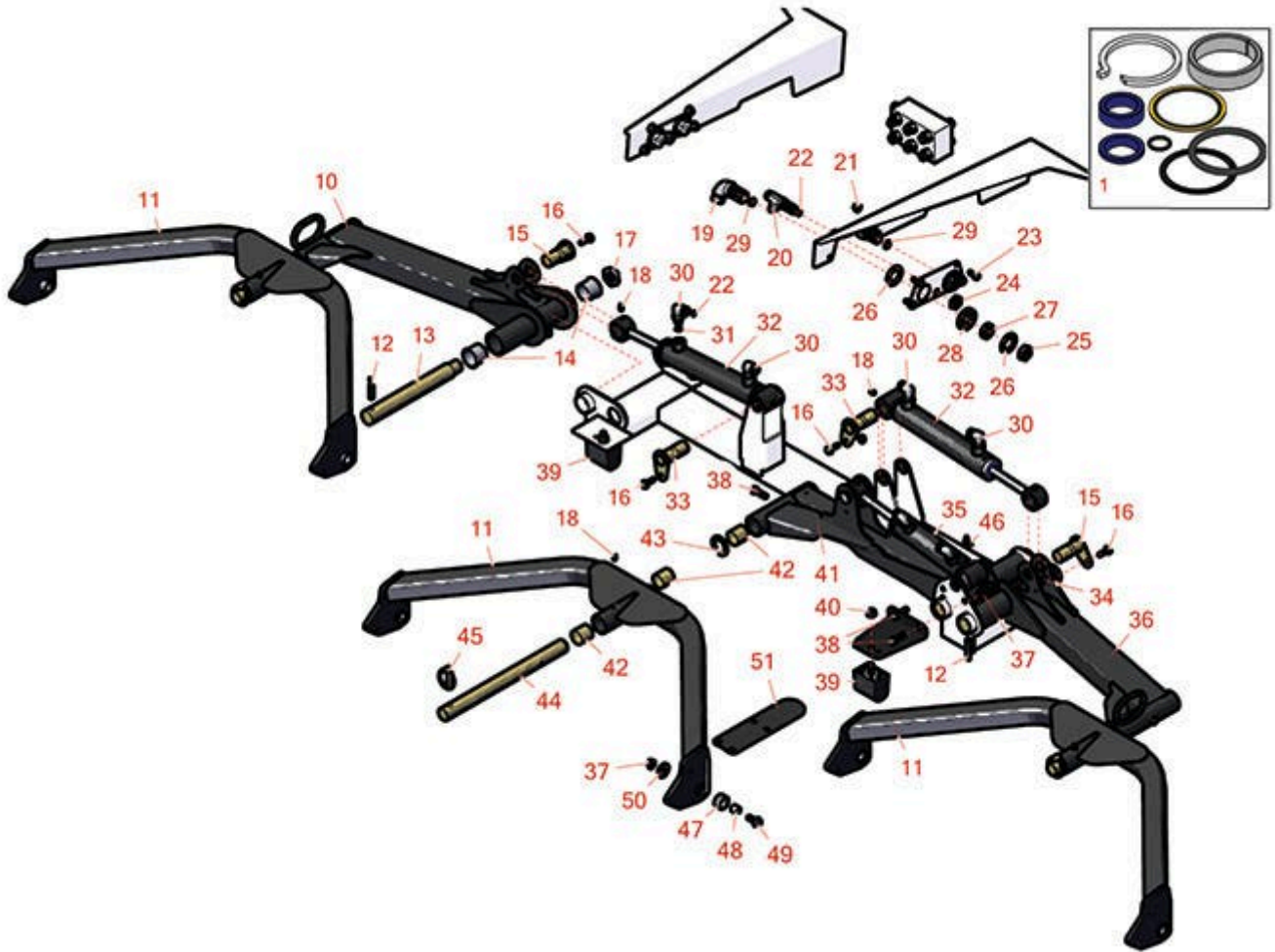


# Replaces Toro Groundsmaster 4500-D

## Parts

Traction Unit - Model 30857

Front Lift Arm



All original equipment manufacturers names and part numbers are used for identification purposes only, and we are in no way implying that our products are original equipment parts. Prices subject to change without notice.



# Replaces Toro Groundsmaster 4500-D Parts

Traction Unit - Model 30857  
Front Lift Arm



Item No	R&R Part No.	OEM Part No.	Description	Qty Req	Order Quantity
---------	--------------	--------------	-------------	---------	----------------

## Overhaul kit

1	<b>R107-1977</b>	107-1977	Seal Kit	1	
---	------------------	----------	----------	---	--

*Tech Note: Fits R107-1979 Cylinder:*

## Other Parts Available

10	<b>R108-4034</b>	108-4034	No. 5 Liftarm Assy	1	
----	------------------	----------	--------------------	---	--

11	<b>R115-3453</b>	104-5656, 115-3453	Carrier Frame Assy	3	
----	------------------	-----------------------	--------------------	---	--

12	<b>R32121-110</b>	32121-110	Roll Pin - Slotted	3	
----	-------------------	-----------	--------------------	---	--

13	<b>R95-7158</b>	95-7158	Pin - Pivot	3	
----	-----------------	---------	-------------	---	--

14	<b>R104-0015</b>	104-0015, 104-8339	Bushing - Flanged	6	
----	------------------	-----------------------	-------------------	---	--

15	<b>R104-5525</b>	104-5525, 131-4201, 131-4201`	Cylinder Pin Assy	3	
----	------------------	-------------------------------------	-------------------	---	--

16	<b>R3234-29</b>	3234-17, 3234-29	Bolt - 5/16-18x1 Serr Hex	6	
----	-----------------	---------------------	---------------------------	---	--

17	<b>R3296-49</b>	3296-49	Locknut - 1 in 14	3	
----	-----------------	---------	-------------------	---	--

18	<b>R302-5</b>	21-6010, 302-11, 302-37, 302-47, 302-5, 302-57, 302-58, 302-6, 31-0300, 32-9660, 60-0800, 62-3880, 92-4181	Fitting - Grease	11	
----	---------------	--	------------------	----	--

19	<b>R340-72</b>	340-72, 96-0865	Fitting-Bulkhead,	1	
----	----------------	--------------------	-------------------	---	--

All original equipment manufacturers names and part numbers are used for identification purposes only, and we are in no way implying that our products are original equipment parts. Prices subject to change without notice.



# Replaces Toro Groundsmaster 4500-D Parts

*Traction Unit - Model 30857  
Front Lift Arm*



Item No	R&R Part No.	OEM Part No.	Description	Qty Req	Order Quantity
20	<b>R340-68</b>	340-120, 340-68	Fitting - Tee - Bulkhead	1	
21	<b>R445722</b>	30-8980, 32128-2, 32128-20, 32128-20, 445722	Nut - Serrated Washer	8	
22	<b>R237-22</b>	107-8844, 237-22, 237-78	O-Ring	9	
23	<b>R322-3</b>	01-150-1420, 01-178-0506, 20-24-AD, 20-24-AGD, 322-3, 48-9270, 513339, 908017P	Bolt - Hex HD 5/16-18 x 3/4	8	
24	<b>R340-70</b>	340-70	Nut - Lock	2	
25	<b>R340-74</b>	340-74	Locknut - Bulkhead	5	
26	<b>R69-9010</b>	69-9010, 9-9010	Washer	10	
27	<b>R69-9000</b>	125-1984, 69-9000	Spacer	5	
28	<b>R240-3</b>	240-3	Grommet- Rubber	5	
29	<b>R237-65</b>	237-65, 237.65	O-Ring	6	
30	<b>R340-77</b>	340-100, 340-77, 95-7889	Hydraulic Fitting	6	
31	<b>R237-42</b>	237-42, 31-4160	O-Ring	6	

All original equipment manufacturers names and part numbers are used for identification purposes only, and we are in no way implying that our products are original equipment parts. Prices subject to change without notice.



# Replaces Toro Groundsmaster 4500-D Parts

*Traction Unit - Model 30857  
Front Lift Arm*



Item No	R&R Part No.	OEM Part No.	Description	Qty Req	Order Quantity
32	<b>R107-1979</b>	104-5527, 107-1979, 127-6429	Cylinder - Lift	2	
33	<b>R105-9889</b>	105-9889, 125-1906	Cylinder Pin Assy	3	
34	<b>R104-8300</b>	104-8300, 104-8300 , 119-4041	Locknut - 5/16-18 Flanged Y/Zinc	6	
35	<b>R107-1980</b>	104-5528, 107-1980, 127-6427	Cylinder - Lift	1	
36	<b>R108-4033</b>	108-4033	No. 4 Lift Arm Assy	1	
37	<b>R104-8301</b>	104-8301, 104-9301, 109-6658, 133-7570	Locknut - 3/8-16 Nylon Flanged	6	
38	<b>R400264</b>	01-150-0180, 01-178-0610, 20-48-AD, 20-48-AGD, 32-9160, 3224-3, 323-29, 323-7, 400264, 908035P	Bolt - Hex HD 3/8-16 x 1-1/4	5	
39	<b>R87-3470</b>	87-3470	Bumper - Rubber	2	
40	<b>R33025-00</b>	32025-00, 33025-00	Locknut - 10mm x 1.5 Jam	2	
41	<b>R108-4032</b>	108-4032	No. 1 Liftarm Assy	1	
42	<b>R108-4000</b>	108-4000	Bushing	12	
43	<b>R3-6781</b>	3-6781	Washer - Thrust - Castor Wheel	3	
44	<b>R108-4023</b>	108-4023	Shaft - Carrier - Pivot	3	

All original equipment manufacturers names and part numbers are used for identification purposes only, and we are in no way implying that our products are original equipment parts. Prices subject to change without notice.



# Replaces Toro Groundsmaster 4500-D Parts

*Traction Unit - Model 30857  
Front Lift Arm*



Item No	R&R Part No.	OEM Part No.	Description	Qty Req	Order Quantity
45	<b>R283-71</b>	283-71	Pin - Lynch Heavy Duty	3	
46	<b>R302-60</b>	302-60	Zerk - Grease 90 Deg.	1	
47	<b>R105-9823</b>	105-9823	Bushing-Carrier	6	
48	<b>R105-9822</b>	105-9822	Spacer	6	
49	<b>R323-52</b>	323-52	Bolt - 3/8-16 x 1 3/4 Hx HD GR8	6	
50	<b>R93-8806</b>	93-8806	Washer-Hardened	6	
51	<b>R105-9831-03</b>	105-9831-03	Bracket- Bumper	1	

All original equipment manufacturers names and part numbers are used for identification purposes only, and we are in no way implying that our products are original equipment parts. Prices subject to change without notice.