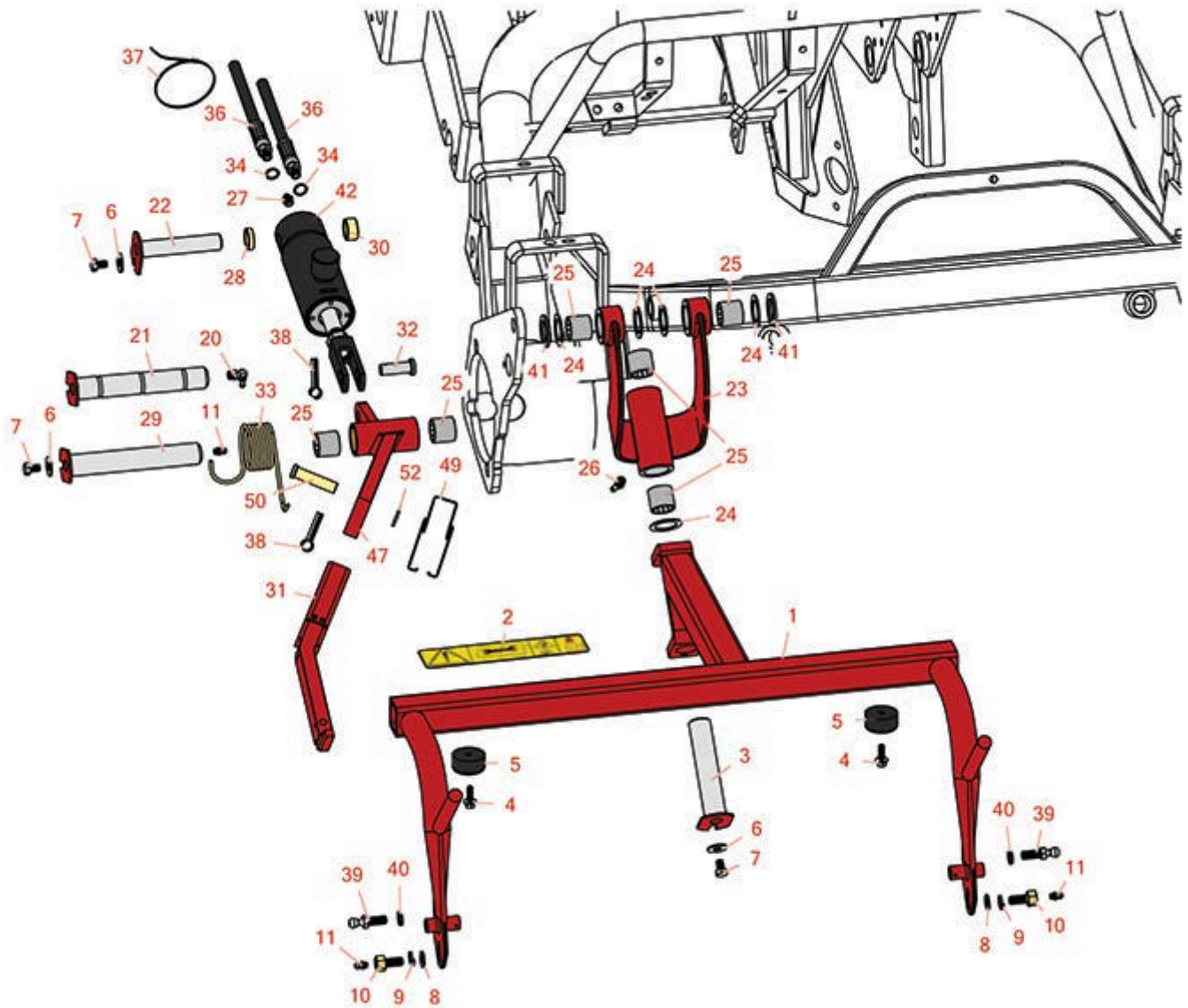




# Replaces Toro Greensmaster 3050 Parts

*Traction Unit - Model 04351*

*Right Hand Pull Frame*



All original equipment manufacturers names and part numbers are used for identification purposes only, and we are in no way implying that our products are original equipment parts. Prices subject to change without notice.



# Replaces Toro Greensmaster 3050 Parts

Traction Unit - Model 04351

Right Hand Pull Frame



Item No	R&R Part No.	OEM Part No.	Description	Qty Req	Order Quantity
1	<b>R112-0282</b>	108-8631, 112-0282, 117-9543	Frame - Pull RH	1	
<i>Tech Note: 2006 &amp; Newer:</i>					
1	<b>R92-9177</b>	104-2055, 92-9177, 92-9177-01	Frame - Pull RH	0	
2	<b>R93-6688</b>	93-6688	Decal - Warning	1	
2	<b>R93-8064</b>	93-8064	Decal - Warning	1	
3	<b>R10-6090</b>	10-6090	Pin - Pivot 4 7/8 Long	1	
4	<b>R49-2040</b>	32104-42, 32104-95, 32144-44, 49-2040	Bolt - Hex Washer 1/4-20 x 3/4	2	
5	<b>R94-4548</b>	94-4548	Rubber Bumper	2	
6	<b>R453009</b>	01-166-0400, 24-10-BD, 24-9-AD, 32-9650, 3256-2, 3256-23, 3256-3, 3256-67, 3290-217, 3556-3, 4-2390, 7-0152	Washer - Flat 5/16 SAE	3	
6	<b>R310266</b>	3256-23, 3256-3, 3556-3	Washer - Flat 5/16 USS	3	

All original equipment manufacturers names and part numbers are used for identification purposes only, and we are in no way implying that our products are original equipment parts. Prices subject to change without notice.



# Replaces Toro Greensmaster 3050 Parts

*Traction Unit - Model 04351*

*Right Hand Pull Frame*



Item No	R&R Part No.	OEM Part No.	Description	Qty Req	Order Quantity
7	<b>R322-1</b>	01-178-0504, 20-22-AD, 20-22-AGD, 322-1, 513337	Bolt - Hex HD 5/16-18 x 1/2	3	
8	<b>R453011</b>	01-166-0100, 01-166-0120, 01-166-0270, 01-166-0500, 01-166-0600, 01-166-0620, 132-4593, 2356-3, 237-12, 24-10-AD, 24-11-AD, 24-11-BD, 24-12-AD, 24-12-BD, 30-9310, 32-8190, 3256-24, 3256-3, 3256-36, 3256-4, 453011, 47-9950, 48-9220, 513458, 7-0052	Washer - Flat 3/8 SAE Y/Zinc	2	
9	<b>R3253-21</b>	215-51, 30-8470, 3253-21, Jul-12	Washer - Lock 3/8	2	
10	<b>R11-0160</b>	11-0160	Screw - Roller Shaft	2	

All original equipment manufacturers names and part numbers are used for identification purposes only, and we are in no way implying that our products are original equipment parts. Prices subject to change without notice.



# Replaces Toro Greensmaster 3050 Parts

Traction Unit - Model 04351

Right Hand Pull Frame



Item No	R&R Part No.	OEM Part No.	Description	Qty Req	Order Quantity
11	<b>R302-5</b>	21-6010, 302-11, 302-37, 302-47, 302-5, 302-57, 302-58, 302-6, 31-0300, 32-9660, 60-0800, 62-3880, 92-4181	Fitting - Grease	2	
20	<b>R323016</b>	302-33, 323016	Zerk - Grease	1	
21	<b>R114-4683</b>	114-4683	Pin - Hinge 6-1/4 Long	1	
22	<b>R10-6060</b>	10-6060, 120-3199	Pin - Pivot 3-7/8 Long	1	
23	<b>R10-7820</b>	10-7820	Pivot Hinge Assy	1	
24	<b>R10-8110</b>	10-8110	Washer - Pivot Pin	6	
25	<b>R3-0348</b>	3-0348	Bushing	4	
26	<b>R302-60</b>	302-60	Zerk - Grease 90 Deg.	2	
27	<b>R700415</b>	302-2	Zerk - Grease 1/8 PTF 45 Deg	1	
28	<b>R105-3828</b>	105-3828	Spacer - Lift Cyl	1	
29	<b>R10-6110</b>	10-6110	Pin - Hinge 6 1/4 Long	1	
30	<b>R74-3730</b>	217-96, 74-3730	Spacer	1	
31	<b>R94-5588-01</b>	94-5588, 94-5588-01	Bar - Lift RH	1	

*Tech Note: 1997-2003:*

All original equipment manufacturers names and part numbers are used for identification purposes only, and we are in no way implying that our products are original equipment parts. Prices subject to change without notice.



# Replaces Toro Greensmaster 3050 Parts

Traction Unit - Model 04351

Right Hand Pull Frame



Item No	R&R Part No.	OEM Part No.	Description	Qty Req	Order Quantity
31	<b>R107-2599</b>	107-2599	Lift Arm Assy - RH	1	
<i>Tech Note: 2004 &amp; Newer:</i>					
32	<b>R283-8</b>	17-3670, 283-8, Jul-35	Clevis Pin - 1/2 x 1-27/64	1	
33	<b>R110-3951</b>	106-9078, 110-3951	Spring - Torsion - RH	1	
<i>Tech Note: 2004 &amp; Newer:</i>					
34	<b>R237-22</b>	107-8844, 237-22, 237-78	O-Ring	2	
36	<b>R92-9767</b>	92-9767	Hydraulic Hose Assy - RH Lift Cylinder	2	
37	<b>R3M41933</b>		Cable Ties - 6" Bulk Pkg/100	1	
38	<b>R3272-11</b>	01-151-0010, 01-151-0040, 28-18-D, 28-28-D, 3211-72, 3272-11	Pin - Cotter	1	
39	<b>R94-2958</b>	94-2958	Stud - Alloy Ball Joint	2	
40	<b>R3254-6</b>	01-166-0010, 01-166-0280, 01-166-0610, 3253-5, 3254-18, 3254-6, 3290-223, 48-9370	Washer - Lock 3/8	2	
41	<b>R5-1226</b>	5-1226	Spacer	2	
42	<b>R106-9066</b>	106-9066	Hydraulic Cylinder - LH / RH	1	
42	<b>R107-2564</b>	107-2564	Seal Kit - Fits 107-1981 Hyd Cyl	1	

All original equipment manufacturers names and part numbers are used for identification purposes only, and we are in no way implying that our products are original equipment parts. Prices subject to change without notice.



# Replaces Toro Greensmaster 3050 Parts

Traction Unit - Model 04351

Right Hand Pull Frame



Item No	R&R Part No.	OEM Part No.	Description	Qty Req	Order Quantity
47	<b>R62-2440</b>	62-2420, 62-2420-01, 62-2440	Arm - Lift RH	2	
<i>Tech Note: 1997-2003:</i>					
49	<b>R57-7650</b>	57-7650	Spring - Torsion Lift Arm	1	
<i>Tech Note: 1997-2003:</i>					
50	<b>R63-8750</b>	57-7630, 63-8750	Clevis Pin	1	
<i>Tech Note: 1997-2003:</i>					
52	<b>R3256-26</b>	01-166-0540, 01-166-0820, 17-2530, 24-13-BD, 30-8570, 3256-26, 356206, 48-9390	Washer - 1/2 in	1	
<i>Tech Note: 1997-2003:</i>					
52	<b>R453017</b>	01-166-0050, 01-166-0240, 01-166-0800, 24-13-AD, 24-14-AD, 32-8110, 3256-26, 3256-6, 453017, 69-8980, 87-7270	Washer - Flat 1/2	1	
<i>Tech Note: 1997-2003:</i>					

All original equipment manufacturers names and part numbers are used for identification purposes only, and we are in no way implying that our products are original equipment parts. Prices subject to change without notice.