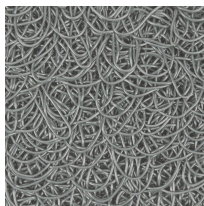
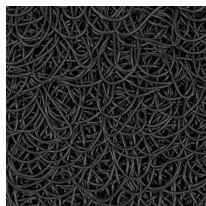
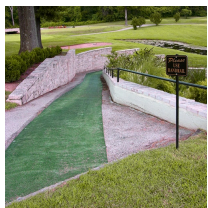
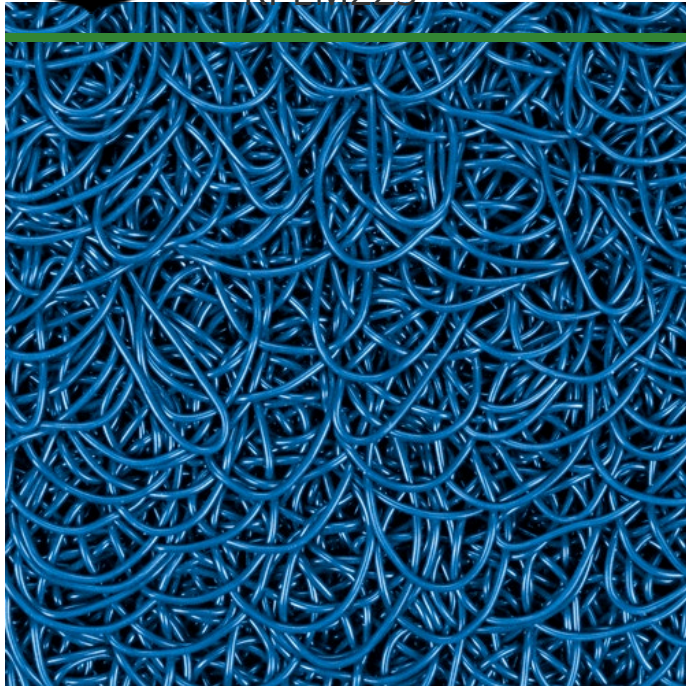




# PEM Matting - 2 x 25 Roll

RPEM225



## Details

Solve your Softspikes slippage problems! P.E.M. matting provides sure footing and excellent traction, reducing risk of slippage and injury on bridges, steps and walkways. Eliminates golf ball bounce on cart paths and worn pathways. Ideal for beverage areas, tee boxes, clubhouse areas, around greens or fairways. Adhere to concrete, wood, asphalt or steel with silicone or screws. Trims easily with razor knife for custom fitting. Lightweight yet resistant to wind uplift. Water drains through the mat eliminating standing liquids. Moisture evaporates beneath mat reducing algae growth. Cleans easily with sweeping or wash down. UV to resist fading. Weatherability -35F to +180F. Hunter Green or Black. Silicone requirements - 4 tubes/roll for foot traffic, 8 tubes/roll for cart traffic.

- Improves footing in high traffic areas
- Water drains through
- Moisture evaporates beneath mat
- Cleans easily
- Adheres to concrete, wood, asphalt or steel
- Weather and UV resistant
- 24" wide x 25 foot roll

## Specifications

Manufacturer

R&R Products

## Options

Color

- Chocolate Brown
- Blue
- Sand
- Gray
- Green

## Evergreen

C/. Bartomeu Amat, 2, Entlo 1 Terrassa, 08225  
+34 931 130 054

<https://evergreen.rrproducts.com/>