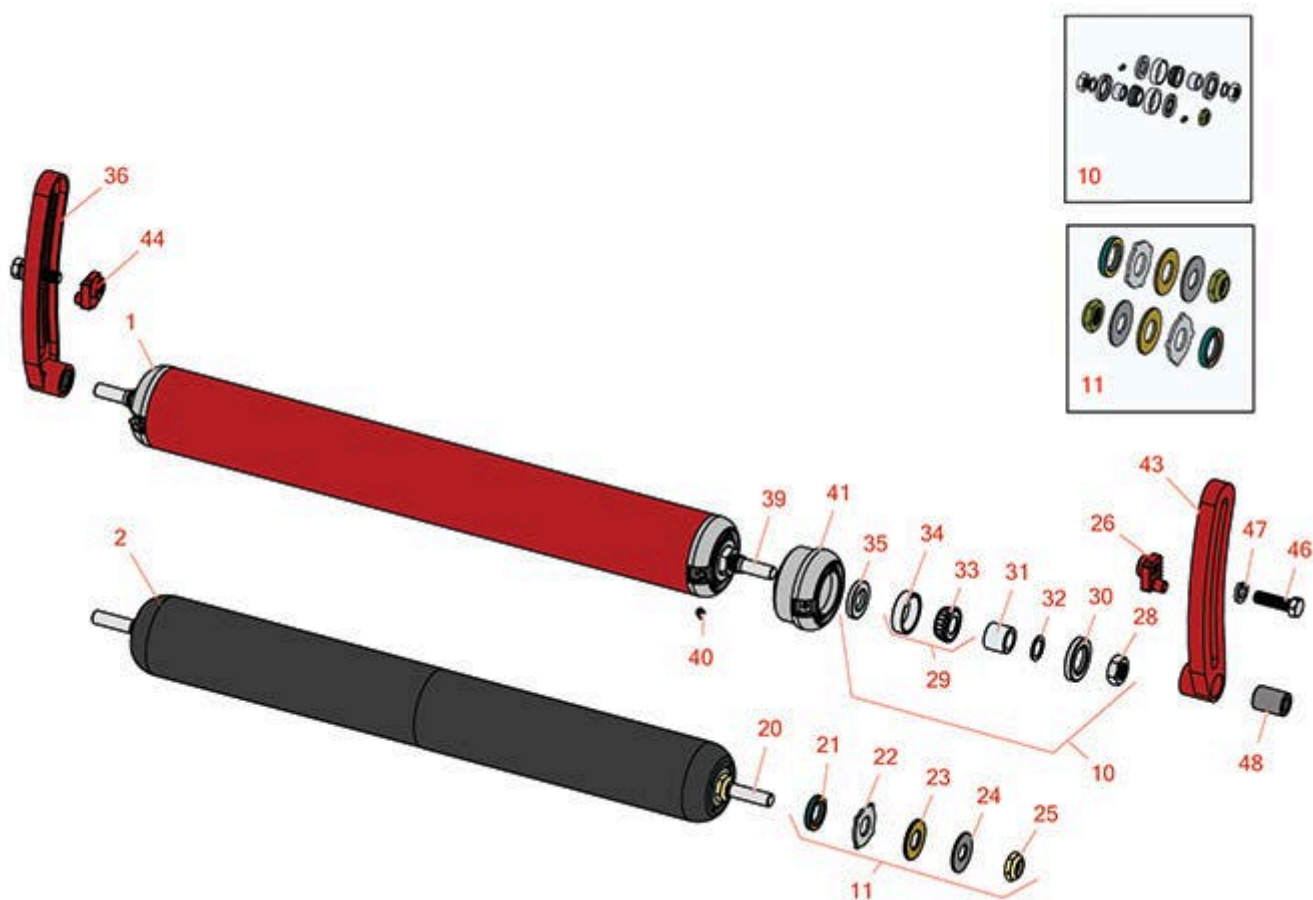




Replaces Toro Reelmaster Fairway

Parts

Cutting Unit
Rollers



All original equipment manufacturers names and part numbers are used for identification purposes only, and we are in no way implying that our products are original equipment parts. Prices subject to change without notice.



Replaces Toro Reelmaster Fairway Parts

Cutting Unit
Rollers



Item No	R&R Part No.	OEM Part No.	Description	Qty Req	Order Quantity
---------	--------------	--------------	-------------	---------	----------------

R&R Rollers

1	R8-3990	2-0949, 3-0321, 5-3939, 8-3990, Apr-49, Feb-39, May-26	Roller - Smooth Heavy Duty Tubular Steel	0	
---	---------	--	---	---	--

Detail Description: Constructed with a through shaft, this heavy duty roller uses tapered bearings for extended life.:

2	R1503850		Roller - Smooth UHMW Polyethylene	0	
---	----------	--	--------------------------------------	---	--

Detail Description: Machined from solid UHMW, this low maintenance roller uses a 1" solid stainless steel shaft and requires no grease. UHMW material prevents build-up of debris.:

Overhaul Kits

10	R100165		Overhaul Kit - Roller	0	
----	---------	--	-----------------------	---	--

Detail Description: Includes 2 ea.: R253-117 Seals, R253-122 Seals, R254-78 Bearings, R254-79 Bearing Cups, R302-5 Grease Fittings, R3220-7 Nuts, R47-7510 Washers, R5-4523 Sleeves; 1 ea.: R3296-15 Locknut:

11	R101399		Overhaul Kit - UHMW 2 Pc Roller	1	
----	---------	--	---------------------------------	---	--

Detail Description: Fits all R&R 2-1/2" - 3-1/2" Dia. Black UHMW Plastic Rollers that do not use ball bearings.. Includes 2 ea.: R1503230 Star Washers, R1503470 Seals, R150333 Thrust Washers, R3296-15 Locknuts, R1503471 Bronze Thrust Washers:

Other Parts Available

20	R1503860		Shaft - 1 SS Roller	1	
21	R1503470		Seal - Inner Wiper	2	
22	R1503230		Washer - Thrust Outer Keyed	2	
23	R1503471		Washer - Thrust SAE660 Bronze	2	
24	R150333		Washer - Flat Keyed Outer SS	2	

All original equipment manufacturers names and part numbers are used for identification purposes only, and we are in no way implying that our products are original equipment parts. Prices subject to change without notice.



Replaces Toro Reelmaster Fairway

Parts

Cutting Unit
Rollers



Item No	R&R Part No.	OEM Part No.	Description	Qty Req	Order Quantity
25	R3296-15	116-7306, 32118-5, 32127-23, 32127-47, 3296-15	Locknut - 3/4-16 Nylon Jam	2	
26	R6-1130	6-1130	Nut - Adjusting LH	1	
26	R47-4390	47-4390	Nut - Roller Adj LH	1	
28	R3220-7	01-191-1216, 3220-7, Mar-03	Nut - 3/4-16 Jam Zinc	2	
29	R500534	1-633585	Bearing - with Cup	2	
<i>Detail Description: Kit includes: 1 ea R254-78- Bearing Cone & R254-79 Bearing Cone:</i>					
30	R253-117	253-117, 253-165	Seal - Outer Triple Lip	2	
31	R5-4523	5-4523	Sleeve - Roller	2	
31	R5-4523S		Sleeve - Stainless Roller	2	
32	R47-7510	47-7510	Washer - Nylon	2	
33	R254-78	01-102-0060, 01-102-0130, 1-633585, 254-78, 32-7790, 32-9580, 93-4813	Tapered Bearing Cone	2	
34	R254-79	01-103-0060, 01-103-0130, 1-633584, 252-106, 254-79, 32-7800, 32-9590	Cup - Bearing	2	

Detail Description: Use R254-79M installation mandrel to properly install race.:

All original equipment manufacturers names and part numbers are used for identification purposes only, and we are in no way implying that our products are original equipment parts. Prices subject to change without notice.



Replaces Toro Reelmaster Fairway

Parts

Cutting Unit
Rollers



Item No	R&R Part No.	OEM Part No.	Description	Qty Req	Order Quantity
35	R253-122	253-122, 30-0640	Seal	2	
36	R11-5079	11-5079	Bracket - Roller LH	1	
<i>Tech Note: Fits Reelmaster Only:</i>					
39	R8-3980	8-3980	Shaft - Roller -1969-ON	1	
40	R302-5	21-6010, 302-11, 302-37, 302-47, 302-5, 302-57, 302-58, 302-6, 31-0300, 32-9660, 60-0800, 62-3880, 92-4181	Fitting - Grease	2	
41	R4-5659	4-5659	Roller End	2	
43	R11-5089	11-5089	Bracket - Roller RH	1	
44	R6-1120	6-1120	Nut - Adjusting RH	1	
44	R47-4380	47-4380	Nut - Roller Adj RH	1	
46	R325-7	01-150-0380, 01-178-0814, 3226-3, 325-7, 48-9490	Bolt - 1/2-13 x 1 3/4 Hex HD Gr 5	2	
47	R3253-7	01-166-0030, 01-166-0080, 01-166-0290, 01-166-0810, 23-13-GD, 3253-7, 48-9380	Washer - Lock 1/2	2	

All original equipment manufacturers names and part numbers are used for identification purposes only, and we are in no way implying that our products are original equipment parts. Prices subject to change without notice.



Replaces Toro Reelmaster Fairway

Parts

*Cutting Unit
Rollers*



Item No	R&R Part No.	OEM Part No.	Description	Qty Req	Order Quantity
48	R3-4010	3-4010	Bushing	2	

All original equipment manufacturers names and part numbers are used for identification purposes only, and we are in no way implying that our products are original equipment parts. Prices subject to change without notice.