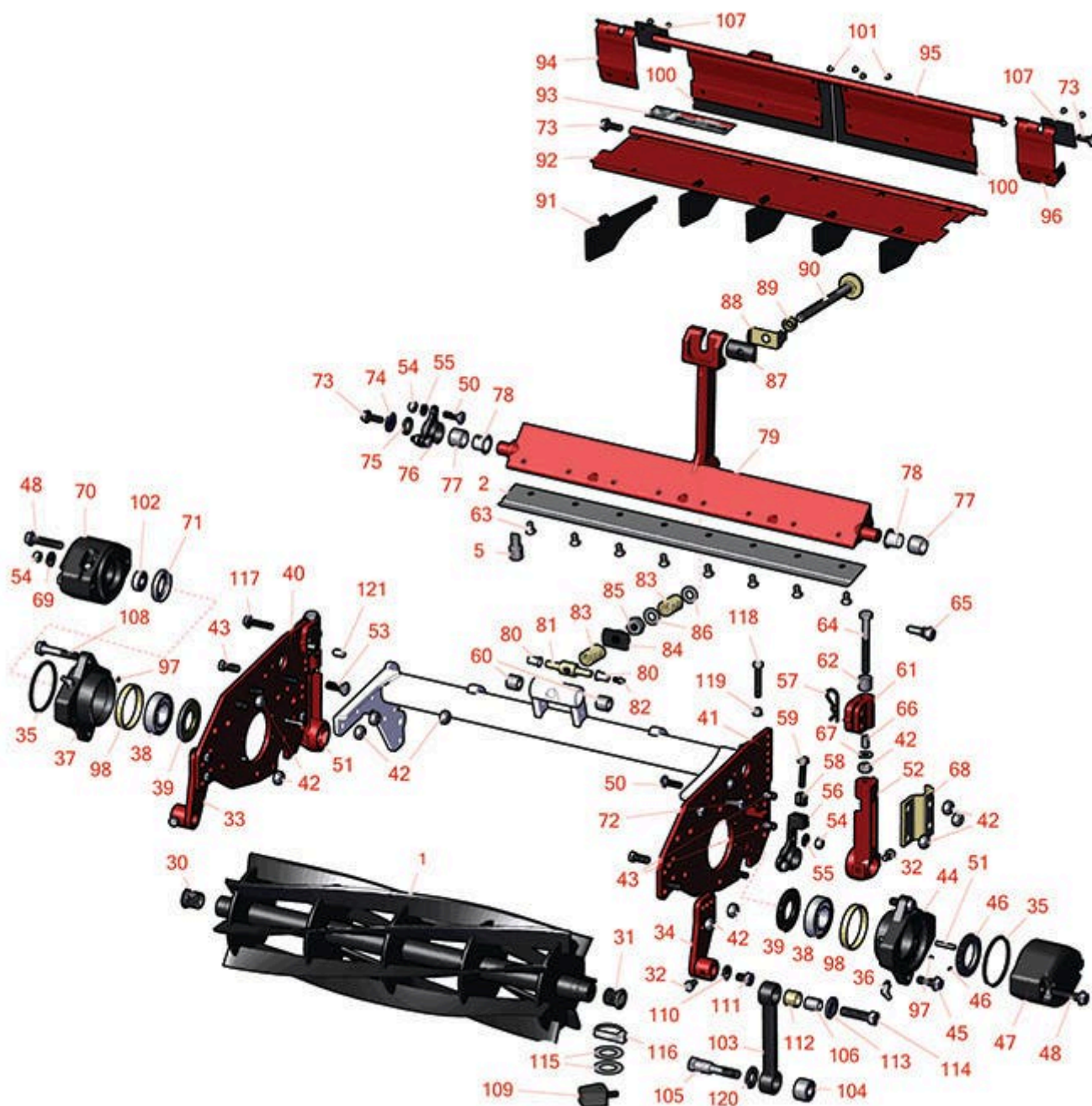




Replaces Toro Reelmaster 6700D Parts

Cutting Unit - Models 03853, 03854 & 03856

Reel & Bedknife



All original equipment manufacturers names and part numbers are used for identification purposes only, and we are in no way implying that our products are original equipment parts. Prices subject to change without notice.



Replaces Toro Reelmaster 6700D Parts

Cutting Unit - Models 03853, 03854 & 03856
Reel & Bedknife



Item No	R&R Part No.	OEM Part No.	Description	Qty Req	Order Quantity
---------	--------------	--------------	-------------	---------	----------------

R&R Reels, Lifetime Guaranteed

1	R94-4337	93-7520, 94-4337	Reel - 5 Blade	1	
---	-----------------	---------------------	----------------	---	--

Detail Description: R&R Reel blades are expertly crafted from premium high carbon-boron alloy steel, heat-treated to perfectly complement both R&R and OEM bedknives. Each reel undergoes precision cylindrical grinding on bearing surfaces, followed by relief grinding for optimal performance. Advanced computer balancing ensures extended reel and bearing life. Backed by our lifetime guarantee against defects in materials and craftsmanship under normal use, R&R Reels deliver unmatched durability and cutting precision you can trust.:

1	R95-2770	95-2770	Reel - 7 Blade	1	
---	-----------------	---------	----------------	---	--

Detail Description: R&R Reel blades are expertly crafted from premium high carbon-boron alloy steel, heat-treated to perfectly complement both R&R and OEM bedknives. Each reel undergoes precision cylindrical grinding on bearing surfaces, followed by relief grinding for optimal performance. Advanced computer balancing ensures extended reel and bearing life. Backed by our lifetime guarantee against defects in materials and craftsmanship under normal use, R&R Reels deliver unmatched durability and cutting precision you can trust.:

1	R94-4338	93-7521, 94-4338	Reel - 11 Blade	1	
---	-----------------	---------------------	-----------------	---	--

Detail Description: R&R Reel blades are expertly crafted from premium high carbon-boron alloy steel, heat-treated to perfectly complement both R&R and OEM bedknives. Each reel undergoes precision cylindrical grinding on bearing surfaces, followed by relief grinding for optimal performance. Advanced computer balancing ensures extended reel and bearing life. Backed by our lifetime guarantee against defects in materials and craftsmanship under normal use, R&R Reels deliver unmatched durability and cutting precision you can trust.:

R&R Bedknives, Lifetime Guaranteed

2	R93-9774	93-9774	Bedknife - 5/16	1	
---	-----------------	---------	-----------------	---	--

Detail Description: R&R Bedknives are manufactured from high carbon-boron alloy steel and then hardened to RC46-49 to match the temper of our reel blades and original equipment reels. Bedknives are surface ground on the top and front edge and straightened three times before being packaged with oil for rust prevention. All R&R Bedknives now have an increased front edge grind for added life. All R&R Bedknives are guaranteed against defects in material and workmanship under normal use for the life of the part.:

2	R94-8936	94-8936	Bedknife - 1/2	1	
---	-----------------	---------	----------------	---	--

All original equipment manufacturers names and part numbers are used for identification purposes only, and we are in no way implying that our products are original equipment parts. Prices subject to change without notice.



Replaces Toro Reelmaster 6700D Parts

Cutting Unit - Models 03853, 03854 & 03856

Reel & Bedknife



Item No	R&R Part No.	OEM Part No.	Description	Qty Req	Order Quantity
---------	--------------	--------------	-------------	---------	----------------

Detail Description: R&R Bedknives are manufactured from high carbon-boron alloy steel and then hardened to RC46-49 to match the temper of our reel blades and original equipment reels. Bedknives are surface ground on the top and front edge and straightened three times before being packaged with oil for rust prevention. All R&R Bedknives now have an increased front edge grind for added life. All R&R Bedknives are guaranteed against defects in material and workmanship under normal use for the life of the part.:

Service Tools

5	R51-0880	51-0880	Bedknife Screw Driver Tool	0
---	-----------------	---------	----------------------------	---

Detail Description: Easily install and remove bed knife screws with the help of a ratchet with 3/8" drive. Tool manufactured with hardened alloy steel.:

Other Parts Available

30	R94-2732	94-2732	Insert - Threaded RH	1
31	R94-2733	94-2733	Insert - Threaded LH	1
32	R93-9757	93-9757	Bolt - Hex HD Nyloc M8 x 16	4
33	R94-4332	94-4332, 94-4332-01	Bracket - LH Front Roller	1
34	R94-4333	94-4333, 94-4333-01	Bracket - RH Front Roller	1
35	R93-9783	93-9783	O-Ring - Reel	2
36	R700414	302-11, 302-19, 302-4, 32-8170	Zerk - Grease 1/4-28 45 Deg	2
37	R93-9794	93-9794	Housing - Bearing RH	1
38	R93-2489	93-2489	Bearing - Reel	2
39	R94-8908	93-2483, 94-8908	Seal - Reel	2
40	R93-2981-01	93-2981, 93-2981-01	Sideplate- RH	1

All original equipment manufacturers names and part numbers are used for identification purposes only, and we are in no way implying that our products are original equipment parts. Prices subject to change without notice.



Replaces Toro Reelmaster 6700D Parts

Cutting Unit - Models 03853, 03854 & 03856
Reel & Bedknife



Item No	R&R Part No.	OEM Part No.	Description	Qty Req	Order Quantity
41	R93-2982-01	93-2982, 93-2982-01	Sideplate - LH	1	
42	R33025-00	32025-00, 33025-00	Locknut - 10mm x 1.5 Jam	12	
43	R33105-025	33105-025	Bolt - Hex HD M10-1.5 x 25	8	
44	R93-9795	93-9795	Housing - Bearing LH	1	
45	R33105-030	33105-030	Bolt - Hex Washer M10	4	
46	R93-9786	105-6756, 93-9786, 95-2793, 99-5672	Nut - Bearing Adj Incl R3245-42	1	
47	R105-4011-03	105-4011, 105-4011-03, 94-4347, 94-4347-01, 94-4347-03	Weight - End	1	
48	R93-7522	93-7522	Bolt - Hx HD M10-1.5 x 90	4	
50	R94-2738	94-2738	Bolt - Carriage M8-1.25 x 25	4	
51	R32121-69	119-4033, 120-8095, 32121-69	Pin - Roll 1/4 x 1-1/4	4	
52	R93-2904	93-2904, 93-2904-01	Bracket - Rear Roller	2	
53	R33125-030	33125-030, 93-6452	Bolt - Carriage M10 x 30	2	
54	R33024-00	33024-00	Locknut - 8mm x 1.25	5	
55	R33094-00	33094-00, 93-5914	Washer - Flat - 8mm Hardened	4	
56	R93-2512	93-2512	Hub - Pivot LH Bed Bar	1	

All original equipment manufacturers names and part numbers are used for identification purposes only, and we are in no way implying that our products are original equipment parts. Prices subject to change without notice.



Replaces Toro Reelmaster 6700D Parts

Cutting Unit - Models 03853, 03854 & 03856
Reel & Bedknife



Item No	R&R Part No.	OEM Part No.	Description	Qty Req	Order Quantity
56	R100-3381	100-3381	Hub - Pivot LH Bed Bar	1	
<i>Detail Description: Includes R93-7501:</i>					
57	R3290-467	3290-467	Pin-Hair	2	
58	R93-2516	93-2516	Spring - Pivot Hub Bed Bar	1	
59	R93-2571	93-2571	Bolt - Hex Nyloc Washer Head	1	
60	R62-5510	52-2870, 62-5510	Bushing	2	
61	R93-2902-01	93-2902-01	Support - HOC - Rear	2	
62	R94-4344	94-4344	Spacer	2	
63	R150476	3-3816, 3-6462, 57-4910	Screw - Bedknife 5/16-18 x 5/8	8	
64	R93-7500	93-7500	Bolt - Hx HD M10-1.5 x 90	2	
65	R93-2906	93-2906	Pin - HOC	2	
66	R93-2921	93-2921	Spring - Compression	2	
67	R93-7509	93-7509	Washer - Special	2	
68	R61-0910	61-0910	Bracket	2	
69	R310266	3256-23, 3256-3, 3556-3	Washer - Flat 5/16 USS	1	
70	R93-3080-03	93-3080-03	Housing, End Cap	1	
71	R253-117	253-117, 253-165	Seal - Outer Triple Lip	1	
72	R33104-025	33104-025	Bolt - Hex HD Flanged	2	
73	R33104-020	33104-020	Bolt - Hex Washer HD	4	

All original equipment manufacturers names and part numbers are used for identification purposes only, and we are in no way implying that our products are original equipment parts. Prices subject to change without notice.



Replaces Toro Reelmaster 6700D Parts

Cutting Unit - Models 03853, 03854 & 03856
Reel & Bedknife



Item No	R&R Part No.	OEM Part No.	Description	Qty Req	Order Quantity
74	R3256-35	3256-35	Washer - Flat	2	
75	R93-7510	93-7510	Ring - Quad RH Pivot Hub	2	
76	R93-2513	93-2513	Hub - Pivot RH	1	
76	R100-3380	100-3380	Hub - Pivot RH Bed Bar	1	
<i>Detail Description: Includes R93-7501:</i>					
77	R93-7501	93-7501	Bushing	2	
78	R93-7502	93-7502	Bushing - Flanged Nylon	2	
79	R99-8698	93-2854, 95-3458, 99-8698-01	Bed Bar	1	
80	R52-2890	52-2890	Bushing - Flanged	2	
81	R57-5260	107-7409, 57-5260	Pivot - 1/2-20 - Bed Bar	1	
82	R302-18	302-18	Zerk - Grease Press Style	1	
83	R95-0772	93-2915, 95-0772	Spring - Bed Bar Adjuster	2	
84	R93-9780	93-9780	Plate Washer - Spa	1	
85	R3296-62	3296-62	Locknut - 1/2-20 LH Jam	1	
86	R29-8910-01	29-8910	Washer - Flat 1/2	2	
87	R93-2892	93-2892	Pivot - Plastic - Bed Bar	1	
88	R95-8752	93-9767, 95-8752	Arm - Spring	1	
89	R93-2959	93-2959	Spacer - Bed Bar Assy	1	

All original equipment manufacturers names and part numbers are used for identification purposes only, and we are in no way implying that our products are original equipment parts. Prices subject to change without notice.



Replaces Toro Reelmaster 6700D Parts

Cutting Unit - Models 03853, 03854 & 03856
Reel & Bedknife



Item No	R&R Part No.	OEM Part No.	Description	Qty Req	Order Quantity
90	R95-8877	106-7536, 93-2957, 95-2762, 95-8877	Handle - Bed Bar Adjustment	1	
91	R100-2287	100-2287	Deflector-Shield,	5	
92	R98-7978	93-9761, 94-8942, 98-7978	Front Grass Shield	1	
93	R67-7960	27-2890, 62-5070, 67-7960	Decal - Warning	1	
93	R93-6688	93-6688	Decal - Warning	1	
94	R93-2998-01	93-2998, 93-2998-01	Shield - RH	1	
95	R93-2996-01	93-2996, 93-2996-01	Rear Grass Shield	1	
96	R93-3008-01	93-3008, 93-3008-01	Shield - LH	1	
97	R3245-42	3245-42	Screw - Set 8/32 x 1/4	1	
98	R93-2922	93-2922, 93-9793	Ring - Wear Bearing Housing	2	
100	R93-3011	93-3011	Flap - Bottom	2	
101	R3295-48	3295-48	Rivet - 3/16 x 3/8 Tub	14	
101	R700382	700382	Rivet - Guard	14	
102	R93-2956	93-2956	Bearing-Ball	1	
103	R93-3087	93-3087	Bar - Link	2	
104	R93-9775	93-9775	Spacer	2	
105	R93-9777	93-9777	Bolt - Shoulder - Long	2	

All original equipment manufacturers names and part numbers are used for identification purposes only, and we are in no way implying that our products are original equipment parts. Prices subject to change without notice.



Replaces Toro Reelmaster 6700D Parts

Cutting Unit - Models 03853, 03854 & 03856
Reel & Bedknife



Item No	R&R Part No.	OEM Part No.	Description	Qty Req	Order Quantity
106	R94-2700	94-2700	Spacer - Hardened	2	
107	R93-3012	93-3012	Flap - Side	1	
108	R33105-060	33105-060	Bolt - M10-1.5 x 60 Hx HD Fl	2	
109	R106-9004	106-9004, 93-9173, 98-9976, 99-2480, 99-2484, 99-5605	Bumper - Rubber	2	
110	R3290-455	3290-455	Washer - Belleville	2	
111	R33115-016	33115-016	Bolt - Hex HD M10 x 16	2	
112	R94-8945	94-8945	Bushing - Bronze - Link Bar	8	
113	R94-2701	94-2701	Washer - Hardened	12	
114	R94-2702	94-2702	Bolt - Hex HD M12-1.75 x 50	6	
115	R3256-42	3256-42	Washer-Flat	2	
116	R283-71	283-71	Pin - Lynch Heavy Duty	1	
117	R33104-040	33104-040	Bolt - Hex Washer M8 x 40	1	
118	R94-3489	75-8530, 94-3489	Bolt - Hex HD M8 x 50	1	
119	R104-2612	104-2612	Nut - 8mm x 1.25 Fl Lock	3	
119	R14M7298	104-2612, 33004-00	Nut - 8mm x 1.25 Flanged	3	
120	R93-3001	93-3001	Washer	2	
121	R32121-36	32121-36	Pin-Spring	4	

All original equipment manufacturers names and part numbers are used for identification purposes only, and we are in no way implying that our products are original equipment parts. Prices subject to change without notice.