

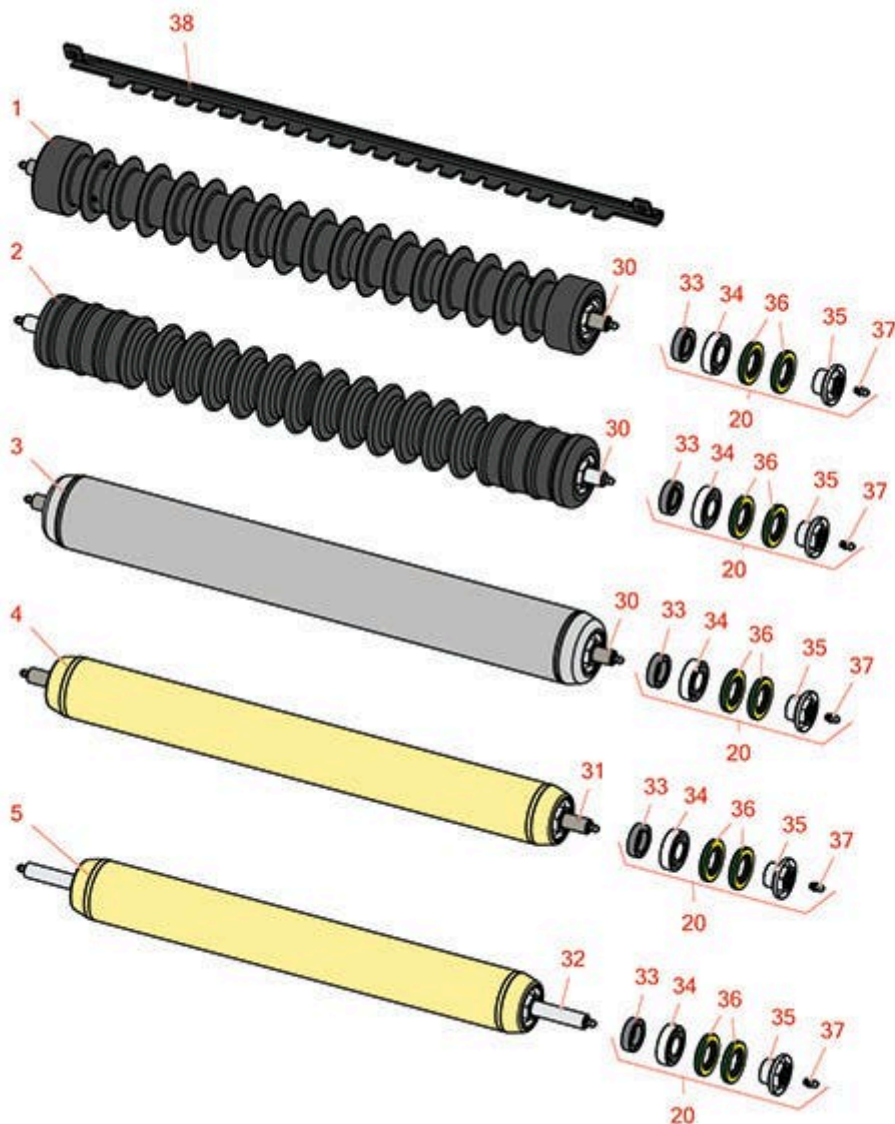


Replaces Toro Reelmaster 3550-D Parts

22in Cutting Unit - Model 03913, 03482, 03483, 03487,

03488 & 03489

Rollers



All original equipment manufacturers names and part numbers are used for identification purposes only, and we are in no way implying that our products are original equipment parts. Prices subject to change without notice.



Replaces Toro Reelmaster 3550-D Parts

22in Cutting Unit - Model 03913, 03482, 03483, 03487,
03488 & 03489
Rollers



Item No	R&R Part No.	OEM Part No.	Description	Qty Req	Order Quantity
---------	--------------	--------------	-------------	---------	----------------

R&R Rollers Available

1	R1503911	110-4050, 114-5400, 114-5421	Roller - Fusion Grooved UHMW Polyethylene	1	
---	-----------------	------------------------------------	--	---	--

Detail Description: Fusion Rollers combine the best features of our UHMW plastic rollers with a heavy-duty internal bearing system. Machined from solid UHMW plastic that prevents build-up of debris. This roller has a patented deep groove design and turns on precision stainless ball bearings and double seals for added life. (2006 & Up):

2	R1503915	110-9608, 114-5421	Roller - Fusion Grooved UHMW Polyethylene Shoulder	1	
---	-----------------	-----------------------	---	---	--

Detail Description: Fusion Rollers combine the best features of our UHMW plastic rollers with a heavy duty internal bearing system. Machined from solid UHMW plastic that prevents build-up of debris. This roller has a patented deep groove design in the center along with shallow grooves on each end to reduce marking in wet conditions and turns on precision stainless ball bearings and double seals for added life.:

3	R114-5412	114-5412	Roller - Smooth Tubular Steel	1	
---	------------------	----------	-------------------------------	---	--

Detail Description: Constructed with a through shaft, this heavy-duty roller uses greasable stainless ball bearings. (2008 & Up):

4	R114-5404	114-5404, 137-6107	Roller - Smooth Tubular Steel - Long	1	
---	------------------	-----------------------	---	---	--

Detail Description: Constructed with a through shaft, this heavy-duty roller uses greasable stainless ball bearings. (2006 - 2007):

5	R114-5406	114-5406	Roller - Smooth Tubular Steel - Short	1	
---	------------------	----------	--	---	--

Detail Description: Constructed with a through shaft, this heavy-duty roller uses greasable stainless ball bearings. (2008 & Up):

Overhaul Kit

20	R114-5430	114-5430	Overhaul Kit - Roller	1	
----	------------------	----------	-----------------------	---	--

Detail Description: Includes 4 ea.: R112-7494 Seals; 2 ea.: R302-5 Grease Zerks, R114-3717 Seals, R112-5290 Bearings & R114-3745 Locknuts:

All original equipment manufacturers names and part numbers are used for identification purposes only, and we are in no way implying that our products are original equipment parts. Prices subject to change without notice.



Replaces Toro Reelmaster 3550-D Parts

22in Cutting Unit - Model 03913, 03482, 03483, 03487,
03488 & 03489
Rollers



Item No	R&R Part No.	OEM Part No.	Description	Qty Req	Order Quantity
Other Parts Available					
30	R114-5403	114-5403	Shaft - Front Roller	1	
31	R114-5407	114-5407	Shaft - Long Rear Roller	1	
32	R114-5410	114-5410	Shaft - Short - Rear Roller	1	
33	R114-3717	114-3717	Seal	2	
34	R112-5290	112-5290, 251--346, 251-346, 72-5430	Bearing - Stainless	2	
35	R114-3745	106-6939, 108-3151, 114-3745, 114-5411	Locknut - Bearing - Stainless	2	
36	R112-7494	112-7494	Seal	4	
37	R302-5	21-6010, 302-11, 302-37, 302-47, 302-5, 302-57, 302-58, 302-6, 31-0300, 32-9660, 60-0800, 62-3880, 92-4181	Fitting - Grease	2	
38	R107-2993-03	107-2993-03	Scraper - Fits Toro Plastic Gr Roller Only	1	

All original equipment manufacturers names and part numbers are used for identification purposes only, and we are in no way implying that our products are original equipment parts. Prices subject to change without notice.