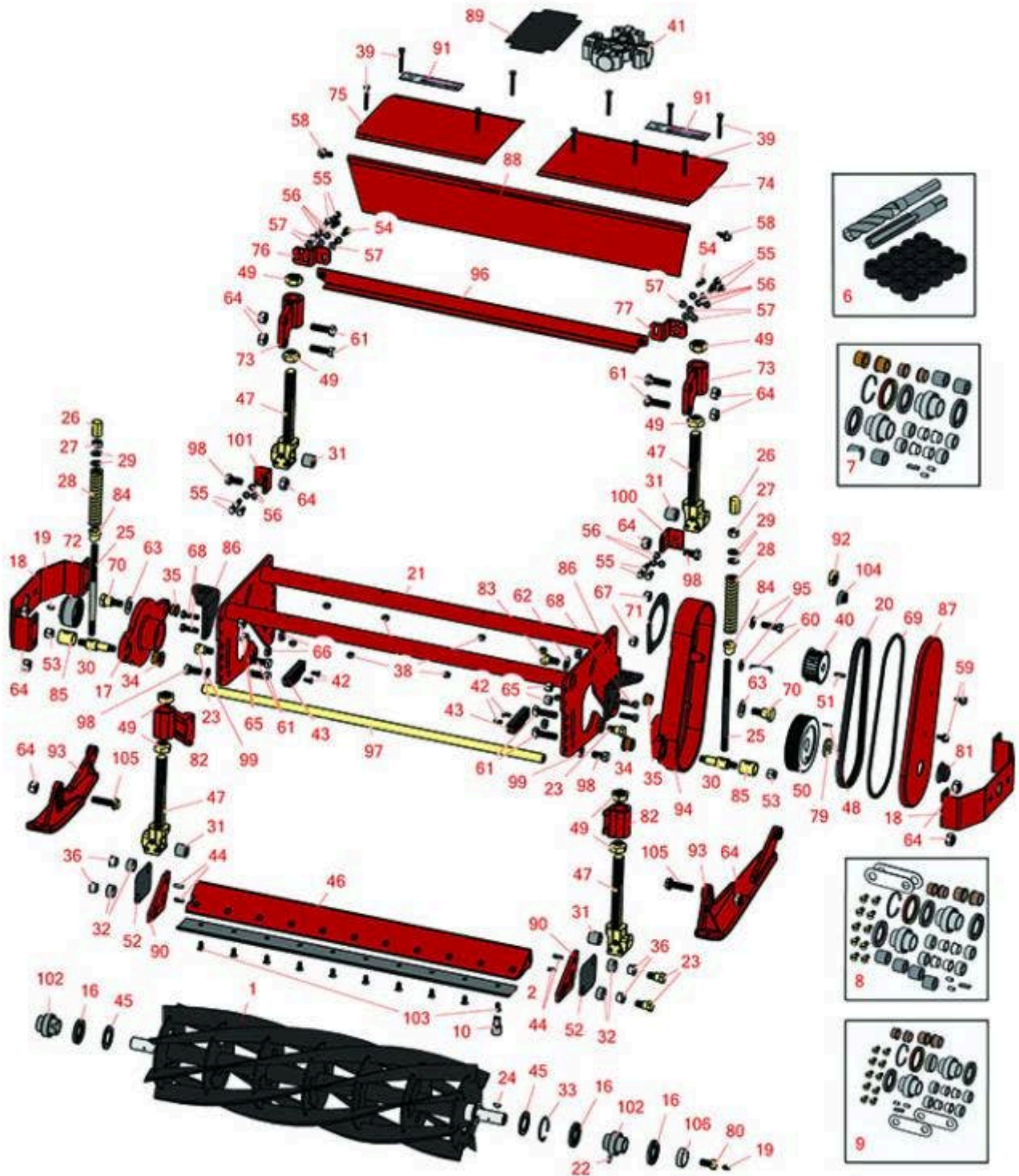




Replaces Toro Reelmaster 335D Parts

Cutting Unit
Reel & Bedknife



All original equipment manufacturers names and part numbers are used for identification purposes only, and we are in no way implying that our products are original equipment parts. Prices subject to change without notice.



Replaces Toro Reelmaster 335D Parts

Cutting Unit
Reel & Bedknife



| Item No | R&R Part No. | OEM Part No. | Description | Qty Req | Order Quantity |
|---------|--------------|--------------|-------------|---------|----------------|
|---------|--------------|--------------|-------------|---------|----------------|

R&R Reels, Lifetime Guaranteed

| | | | | | |
|---|-----------------|---------------------------------|-----------------|---|--|
| 1 | R13-8229 | 12-4459, 13-8229, 14-7419 | Reel - 5 Blade | 1 | |
| 1 | R13-8219 | 12-4469, 13-8219 | Reel - 7 Blade | 1 | |
| 1 | R14-0919 | 14-0919 | Reel - 11 Blade | 1 | |

R&R Bedknives, Lifetime Guaranteed

| | | | | | |
|---|-----------------|---------|---------------------|---|--|
| 2 | R72-0480 | 72-0480 | Bedknife - High Cut | 1 | |
| <i>Tech Note: Use with 5 Blade Reel:</i> | | | | | |
| 2 | R59-5890 | 59-5890 | Bedknife | 1 | |
| <i>Tech Note: Use with 7 Blade Reel:</i> | | | | | |
| 2 | R76-3620 | 76-3620 | Bedknife | 1 | |
| <i>Tech Note: Use with 11 Blade Reel:</i> | | | | | |

Overhaul Kits & Service Tools

| | | | | | |
|--|-----------------|---------------------|-----------------------------|---|--|
| 6 | R150530 | | Repair Kit - Bed Bar | 1 | |
| <i>Tech Note: Includes 20 ea: R150531 Insert; 1 ea: R150532 Drill, R150533 Tap:</i> | | | | | |
| 7 | R150540 | | Overhaul Kit - Cutting Unit | 0 | |
| <i>Tech Note: Includes 4 ea.: R256-292 Bushings, R59-5780 Bushings, R62-6110 Bushings; 3 ea: R253-145 Seals; 2 ea: R256-252 Bushings, R48-8880 Pins, R59-6140 Bearings, R72-0430 Bushings; 1 ea: R32151-71 Ring, R75-7570 Key & R92-9250 Seal:</i> | | | | | |
| 8 | R13-3679 | 13-3679 | Overhaul Kit - Cutting Unit | 0 | |
| <i>Tech Note: Includes 10 ea: R150476 Screws; 4 ea: R256-292 Bushings; R62-6110; 3 ea: R253-145 Seals; 2 ea: R256-113 Bushings, R256-252 Bushings, R48-8880 Pins, R48-9240 Spacers, R59-6140 Bearings, R72-0430 Bushings; 1 ea: R32151-71 Ring, R32... <Click Part# for more>:</i> | | | | | |
| 9 | R95-4389 | 14-2099, 95-4389 | Overhaul Kit - Cutting Unit | 0 | |

All original equipment manufacturers names and part numbers are used for identification purposes only, and we are in no way implying that our products are original equipment parts. Prices subject to change without notice.



Replaces Toro Reelmaster 335D Parts

Cutting Unit
Reel & Bedknife



| Item No | R&R Part No. | OEM Part No. | Description | Qty Req | Order Quantity |
|---------|--------------|--------------|-------------|---------|----------------|
|---------|--------------|--------------|-------------|---------|----------------|

Tech Note: Includes 10 ea: R150476 Screw; 4 ea: R256-292 Bushing, R62-6110 Bushing; 2 ea: R256-252 Bushing, R48-8880 Pin, R59-6140 Bearing, R48-9240 Spacer, R92-9252 Bushing, R253-145 Seal; 1 ea: R32151-71 Ring, R75-7570 Key, R92-9250 Seal, R92-9251 Sleeve:

| | | | | | |
|------------------------------|-----------------|--|-----------------------------|---|--|
| 10 | R51-0880 | 51-0880 | Bedknife Screw Driver Tool | 0 | |
| Other Parts Available | | | | | |
| 16 | R253-145 | 253-145 | Seal - Oil Reel Assy | 1 | |
| 16 | R92-9250 | 92-9250 | Seal - Reel | 1 | |
| 17 | R59-5550 | 59-5550 | Housing - Bearing | 1 | |
| 18 | R72-0470 | 72-0470 | Guard | 1 | |
| 19 | R302-5 | 21-6010, 302-11, 302-37, 302-47, 302-5, 302-57, 302-58, 302-6, 31-0300, 32-9660, 60-0800, 62-3880, 92-4181 | Fitting - Grease | 3 | |
| 20 | R150520 | 47-7160 | Belt - Cutting Unit | 1 | |
| 21 | R14-0829 | 14-0829, 59-6480 | Frame - Cutting Unit | 1 | |
| 22 | R48-8880 | 48-8880 | Pin - Reel Bearing | 2 | |
| 23 | R66-5570 | 62-6100, 66-5570, 84-6090 | Bolt - Shoulder Bed Bar | 4 | |
| 24 | R75-7570 | 75-7570 | Key - Reel 5/32 x 1/4 x.900 | 1 | |
| 25 | R72-0390 | 72-0390 | Rod - Bedknife Adjusting | 2 | |
| 26 | R72-0380 | 72-0380 | Hex - Bedknife Adjuster | 2 | |

All original equipment manufacturers names and part numbers are used for identification purposes only, and we are in no way implying that our products are original equipment parts. Prices subject to change without notice.



Replaces Toro Reelmaster 335D Parts

Cutting Unit
Reel & Bedknife



| Item No | R&R Part No. | OEM Part No. | Description | Qty Req | Order Quantity |
|---------|------------------|--|---|---------|----------------|
| 27 | R443818 | 01-191-0813, 3218-18, 3218-5, 3248-18 | Nut - 1/2-13 Hex Jam Zinc | 2 | |
| 28 | R72-0400 | 72-0400, 92-9231 | Spring - Bed Bar Adj | 2 | |
| 29 | R257-5 | 257-5 | Washer - Thrust | 4 | |
| 30 | R72-0440 | 72-0440 | Pin - Pivot - Bedknife Adj. | 2 | |
| 31 | R59-5780 | 59-5780 | Bushing - Roller Bracket | 4 | |
| 32 | R62-6110 | 62-6110 | Bushing - Rubber For Bed Bar | 4 | |
| 33 | R32151-71 | 32151-71 | Ring - Snap Reel Brg | 1 | |
| 34 | R72-0430 | 72-0430 | Bushing - Adj Pin - 5/8 ID x 1 1/8 Flange | 2 | |
| 34 | R92-9252 | 92-9252 | Bushing - 5/8 ID x 1 1/4 Flange | 2 | |
| 35 | R256-252 | 256-252 | Bushing - 3/4 ID x 1 Flange | 2 | |
| 36 | R256-292 | 104-7738, 256-292 | Bushing - Nyliner Bed Bar | 4 | |
| 38 | R301504 | 2296-42, 301504, 32127-24, 32128-33, 32146-17, 3296-16, 3296-42, 3296-42 , 915661P | Locknut - ESNA 1/4-20 | 10 | |
| 39 | R3234-34 | 321-11, 323-12, 3234-34 | Bolt - Hex Washer 1/4 x 2 | 10 | |

All original equipment manufacturers names and part numbers are used for identification purposes only, and we are in no way implying that our products are original equipment parts. Prices subject to change without notice.



Replaces Toro Reelmaster 335D Parts

Cutting Unit
Reel & Bedknife



| Item No | R&R Part No. | OEM Part No. | Description | Qty Req | Order Quantity |
|---------|------------------|---|-----------------------------------|---------|----------------|
| 39 | R400120 | 01-150-0990, 01-178-0416, 02-150-0990, 321-11, 3222-4, 33114-010, 33114-060, 513327, 908470 | Bolt - Hex HD 1/4-20 x 2 | 0 | |
| 40 | R47-7150 | 47-7150 | Pulley - Belt Drive | 1 | |
| 41 | R59-5910 | 59-5910 | U-Joint | 1 | |
| 42 | R301503 | 32108-101 | Screw - 1/4-20 x 5/8 Mach | 4 | |
| 43 | R77-4810 | 62-6070, 77-4810 | Block - Deflector | 2 | |
| 44 | R32121-11 | 32121-11 | Pin - Roll 1/4 x 3/4 | 4 | |
| 45 | R38-7330 | 38-7330 | Shield - Grass | 2 | |
| 46 | R59-5470 | 59-5470, 59-5470-01 | Backing Bar - Bed Knife | 1 | |
| 46 | R77-4340 | 77-4330, 77-4340, 77-4340-01 | Backing Bar - 11 Blade Reel | 1 | |
| 47 | R84-6100 | 59-5700, 84-6100 | Bracket - Roller w/Rubber Bushing | 4 | |
| 47 | R84-6100S | | Bracket - Roller w/o Bush 562 ID | 4 | |
| 48 | R32121-50 | 32121-50 | Pin - Roll Spiral Lock 1/8 1147 | 1 | |
| 49 | R59-5820 | 59-5820 | Nut - Cone Roller Adj Bkt | 8 | |
| 50 | R47-7140 | 47-7140 | Pulley - Driven Timing Belt | 1 | |
| 51 | R47-2380 | 47-2380 | Key - Drive Pulley | 1 | |
| 52 | R48-9240 | 48-9240, 76-3580 | Spacer - Shim Bed Bar | 0 | |

All original equipment manufacturers names and part numbers are used for identification purposes only, and we are in no way implying that our products are original equipment parts. Prices subject to change without notice.



Replaces Toro Reelmaster 335D Parts

Cutting Unit
Reel & Bedknife



| Item No | R&R Part No. | OEM Part No. | Description | Qty Req | Order Quantity |
|---------|------------------|---|-------------------------------|---------|----------------|
| 53 | R32128-15 | 32128-15, 3290-229 | Locknut - 1/2-20 Flanged | 4 | |
| 54 | R322-3 | 01-150-1420, 01-178-0506, 20-24-AD, 20-24-AGD, 322-3, 48-9270, 513339, 908017P | Bolt - Hex HD 5/16-18 x 3/4 | 2 | |
| 55 | R400184 | 322-2, 322-3 | Screw - 5/16-18 x 3/4 Hex | 6 | |
| 56 | R3253-4 | 01-166-0110, 01-166-0510, 23-10-GD, 24-7170, 30-8520, 3253-4, 42-9850, 48-9350, 48-9360, 48-9570, 68-9420, 99-7577 | Washer - Lock 5/16 Zinc | 8 | |
| 57 | R453009 | 01-166-0400, 24-10-BD, 24-9-AD, 32-9650, 3256-2, 3256-23, 3256-3, 3256-67, 3290-217, 3556-3, 4-2390, 7-0152 | Washer - Flat 5/16 SAE | 8 | |
| 58 | R3234-12 | 3234-12 | Bolt - Hex Serrated Washer HD | 2 | |
| 59 | R3234-14 | 3234-14, 3234-23 | Bolt - Hex Serrated Washer HD | 2 | |

All original equipment manufacturers names and part numbers are used for identification purposes only, and we are in no way implying that our products are original equipment parts. Prices subject to change without notice.



Replaces Toro Reelmaster 335D Parts

Cutting Unit
Reel & Bedknife



| Item No | R&R Part No. | OEM Part No. | Description | Qty Req | Order Quantity |
|---------|------------------|---|-----------------------------------|---------|----------------|
| 60 | R324-6 | 01-150-1690, 01-178-0712, 20-68-AGD, 3225-3, 324-6 | Bolt - Hex HD 7/16-14 x 1-1/2 | 2 | |
| 61 | R325-7 | 01-150-0380, 01-178-0814, 3226-3, 325-7, 48-9490 | Bolt - 1/2-13 x 1 3/4 Hex HD Gr 5 | 4 | |
| 62 | R3256-69 | 3256-69 | Washer - Flat | 1 | |
| 63 | R3290-440 | 3290-440 | Washer - Belleville | 2 | |
| 64 | R3296-25 | 30-3380, 32127-21, 32127-31, 3290-160, 3290-33, 3296-13, 3296-25, 3296-45, 329645 | Locknut - 1/2-13 Heavy ESNA | 4 | |
| 65 | R3296-26 | 3296-26 | Locknut - 3/8-16 ESNA Heavy | 4 | |
| 66 | R3296-28 | 119-4154, 140-9234, 32127-34, 32128-7, 32128-8, 32136-7, 3296-28 | Nut - 1/2-20 ESNA Jam | 2 | |
| 67 | R3296-48 | 119-4039, 32146-7, 3296-34, 3296-48 | Locknut - 7/16-14 ESNA | 2 | |

All original equipment manufacturers names and part numbers are used for identification purposes only, and we are in no way implying that our products are original equipment parts. Prices subject to change without notice.



Replaces Toro Reelmaster 335D Parts

Cutting Unit
Reel & Bedknife



| Item No | R&R Part No. | OEM Part No. | Description | Qty Req | Order Quantity |
|---------|-----------------|---|------------------------------|---------|----------------|
| 68 | R400264 | 01-150-0180, 01-178-0610, 20-48-AD, 20-48-AGD, 32-9160, 3224-3, 323-29, 323-7, 400264, 908035P | Bolt - Hex HD 3/8-16 x 1-1/4 | 4 | |
| 69 | R47-7170 | 47-7170 | Gasket - Cover | 1 | |
| 70 | R48-9020 | 48-9020 | Bolt - Shoulder 1/2-20 | 2 | |
| 71 | R48-9050 | 48-9050 | Plate - Drive | 1 | |
| 72 | R59-5560 | 59-5560 | Cap - Dust | 1 | |
| 73 | R59-5770 | 59-5770 | Bracket - Rear Roller | 2 | |
| 74 | R59-5830 | 59-5830, 59-5830-01 | Cover - Inner Grass Shield | 1 | |
| 75 | R59-5840 | 59-5840 | Cover - Outer Grass Shield | 1 | |
| 76 | R59-6070 | 59-6070 | Bracket - Scraper RH | 1 | |
| 77 | R59-6080 | 59-6080 | Bracket - Scraper LH | 1 | |
| 79 | R59-6150 | 59-6150 | Washer - Reel Pulley | 1 | |
| 80 | R59-6190 | 59-6190 | Bolt - Reel Special | 1 | |
| 81 | R59-7490 | 59-7490 | Caplug | 1 | |
| 82 | R62-5960 | 62-5960 | Bracket - LH Roller | 2 | |
| 82 | R62-5980 | 62-5980 | Bracket - RH Roller | 2 | |
| 82 | R84-6040 | 84-6040 | Bracket - RH Roller | 2 | |
| 82 | R84-6050 | 84-6050 | Bracket - LH Roller | 2 | |
| 83 | R62-6080 | 62-6080 | Bolt - Shoulder | 1 | |

All original equipment manufacturers names and part numbers are used for identification purposes only, and we are in no way implying that our products are original equipment parts. Prices subject to change without notice.



Replaces Toro Reelmaster 335D Parts

*Cutting Unit
Reel & Bedknife*



| Item No | R&R Part No. | OEM Part No. | Description | Qty Req | Order Quantity |
|---------|-----------------|--|-----------------------------|---------|----------------|
| 84 | R72-0410 | 72-0410 | Stand - Off | 2 | |
| 85 | R72-0420 | 72-0420 | Tube - Clamp | 2 | |
| 86 | R72-0450 | 72-0450 | Bracket - RH Bedknife Adj | 1 | |
| 86 | R72-0460 | 72-0460 | Bracket - LH Bedknife Adj | 1 | |
| 87 | R75-7580 | 75-7580, 75-7580-01 | Cover - Drive RH | 1 | |
| 87 | R75-7590 | 75-7590, 75-7590-01 | Cover - Drive LH | 1 | |
| 88 | R75-7680 | 51-1600, 52-9660, 75-7680, 75-7680-01 | Deflector | 1 | |
| 89 | R75-8100 | 75-8100 | Cover - Center | 1 | |
| 90 | R76-3600 | 76-3600 | Plate - LH End - Bed Bar | 1 | |
| 90 | R76-3610 | 76-3610 | Plate - RH End Bed Bar | 1 | |
| 91 | R76-8760 | 76-8760 | Decal | 2 | |
| 92 | R82-9390 | 82-9390 | Nut - Special Drive Housing | 2 | |
| 93 | R84-0810 | 59-5990, 84-0810 | Skid - LH | 1 | |
| 93 | R84-0820 | 59-5980, 84-0820 | Skid - RH | 1 | |
| 94 | R92-6098 | 92-6098 | Housing - RH | 1 | |
| 94 | R92-6099 | 92-6099 | Housing - Drive LH | 1 | |
| 95 | R187-0 | 3256-25, 7-0032 | Washer - Flat 7/16 SAE | 1 | |
| 96 | R150521 | | Bar - Scraper | 1 | |
| 97 | R93-7769 | 93-7769 | Rod - Support | 1 | |

All original equipment manufacturers names and part numbers are used for identification purposes only, and we are in no way implying that our products are original equipment parts. Prices subject to change without notice.



Replaces Toro Reelmaster 335D Parts

Cutting Unit
Reel & Bedknife



| Item No | R&R Part No. | OEM Part No. | Description | Qty Req | Order Quantity |
|---------|-----------------|--|---|---------|----------------|
| 98 | R325-4 | 01-150-0280, 01-178-0806, 01-178-0808, 20-85-AD, 20-85-AGD, 325-1, 325-2, 325-4 | Bolt - Hex HD 1/2-13 x 1 | 2 | |
| 99 | R3253-7 | 01-166-0030, 01-166-0080, 01-166-0290, 01-166-0810, 23-13-GD, 3253-7, 48-9380 | Washer - Lock 1/2 | 2 | |
| 100 | R59-6000 | 59-6000 | Bracket - Skid RH | 1 | |
| 101 | R59-6010 | 59-6010 | Bracket - Skid LH | 1 | |
| 102 | R59-6140 | 251-298, 48-8860, 59-6140 | Bearing - Reel | 2 | |
| 103 | R150475 | 3-6462, 3-6642 | Screw - Bedknife Stainless 5/16-18 x 5/8 | 0 | |
| 103 | R150476 | 3-3816, 3-6462, 52-4910, 57-4910 | Screw - Bedknife 5/16-18 x 5/8 | 0 | |
| 104 | R66-5710 | 117-8976, 66-5710 | Seal - Hyd Motor Shaft | 1 | |
| 105 | R3234-27 | 3234-27 | Bolt - 1/2-13 x 2 Hex | 2 | |
| 106 | R92-9251 | 92-9251 | Sleeve - Wear Reel Bearing | 1 | |

All original equipment manufacturers names and part numbers are used for identification purposes only, and we are in no way implying that our products are original equipment parts. Prices subject to change without notice.