

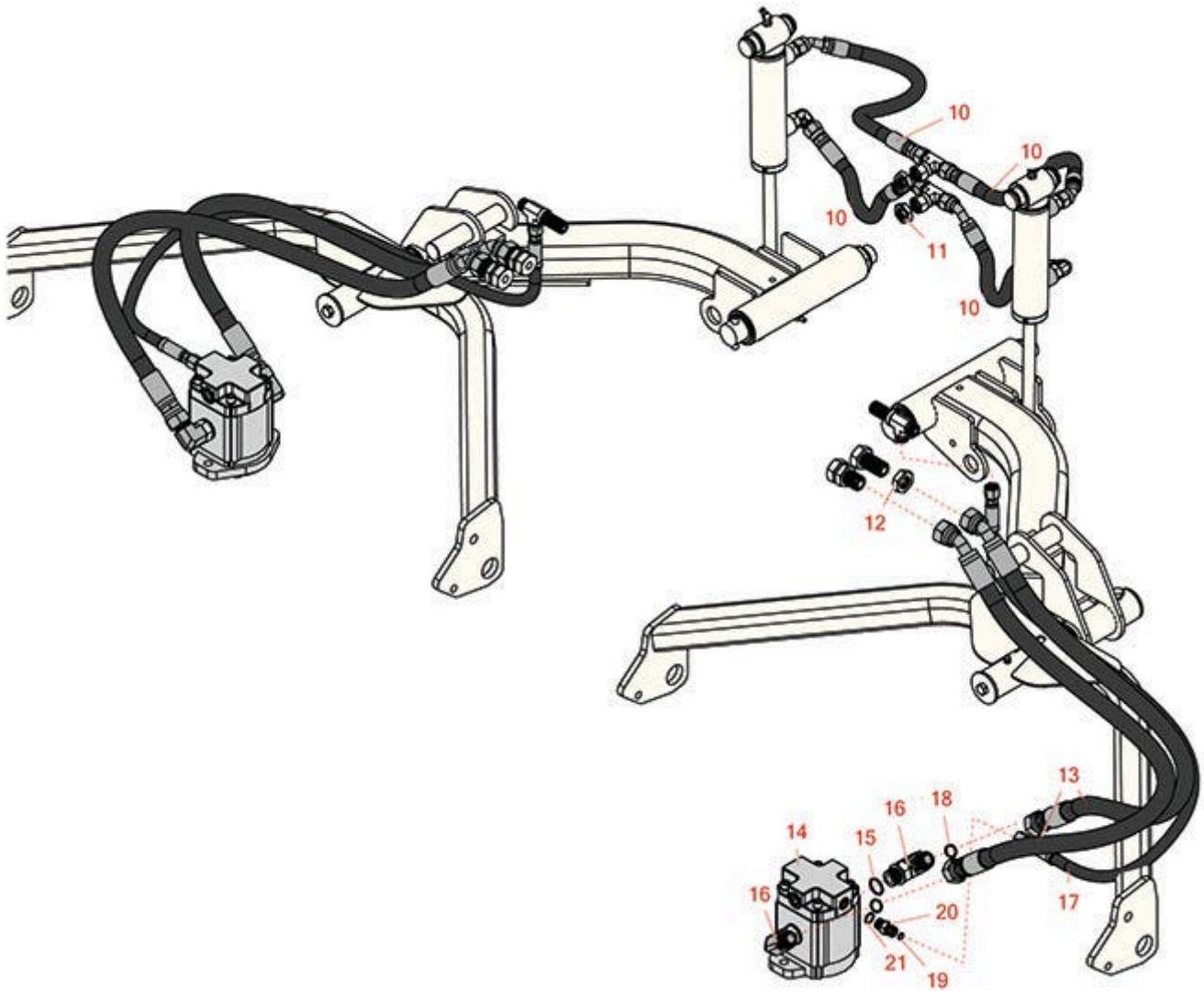


Replaces Toro Groundsmaster 4500-D

Parts

Traction Unit

Rear Lift Arm Hydraulics



All original equipment manufacturers names and part numbers are used for identification purposes only, and we are in no way implying that our products are original equipment parts. Prices subject to change without notice.



Replaces Toro Groundsmaster 4500-D Parts

*Traction Unit
Rear Lift Arm Hydraulics*



Item No	R&R Part No.	OEM Part No.	Description	Qty Req	Order Quantity
10	R105-9238	105-9238	Hydraulic Hose Assy	4	
11	R340-70	340-70	Nut - Lock	2	
12	R340-74	340-74	Locknut - Bulkhead	4	
13	R104-5505	104-5505	Hydraulic Hose Assy	4	
14	R117-5141	105-9820, 105-9872, 117-5141	Hydraulic Motor	0	
15	R237-80	237-80, 327-80	O-Ring	4	
16	R340-17	340-17	No 10 Male Orfs x No 10 Male Orb	4	
17	R104-5502	104-5502	Hydraulic Hose Assy	2	
18	R237-65	237-65, 237.65	O-Ring	4	
19	R237-21	237-21, 327-21	O-Ring	2	
20	R340-92	340-92	Hydraulic Fitting - Striaight	2	
21	R237-22	107-8844, 237-22, 237-78	O-Ring	2	

All original equipment manufacturers names and part numbers are used for identification purposes only, and we are in no way implying that our products are original equipment parts. Prices subject to change without notice.