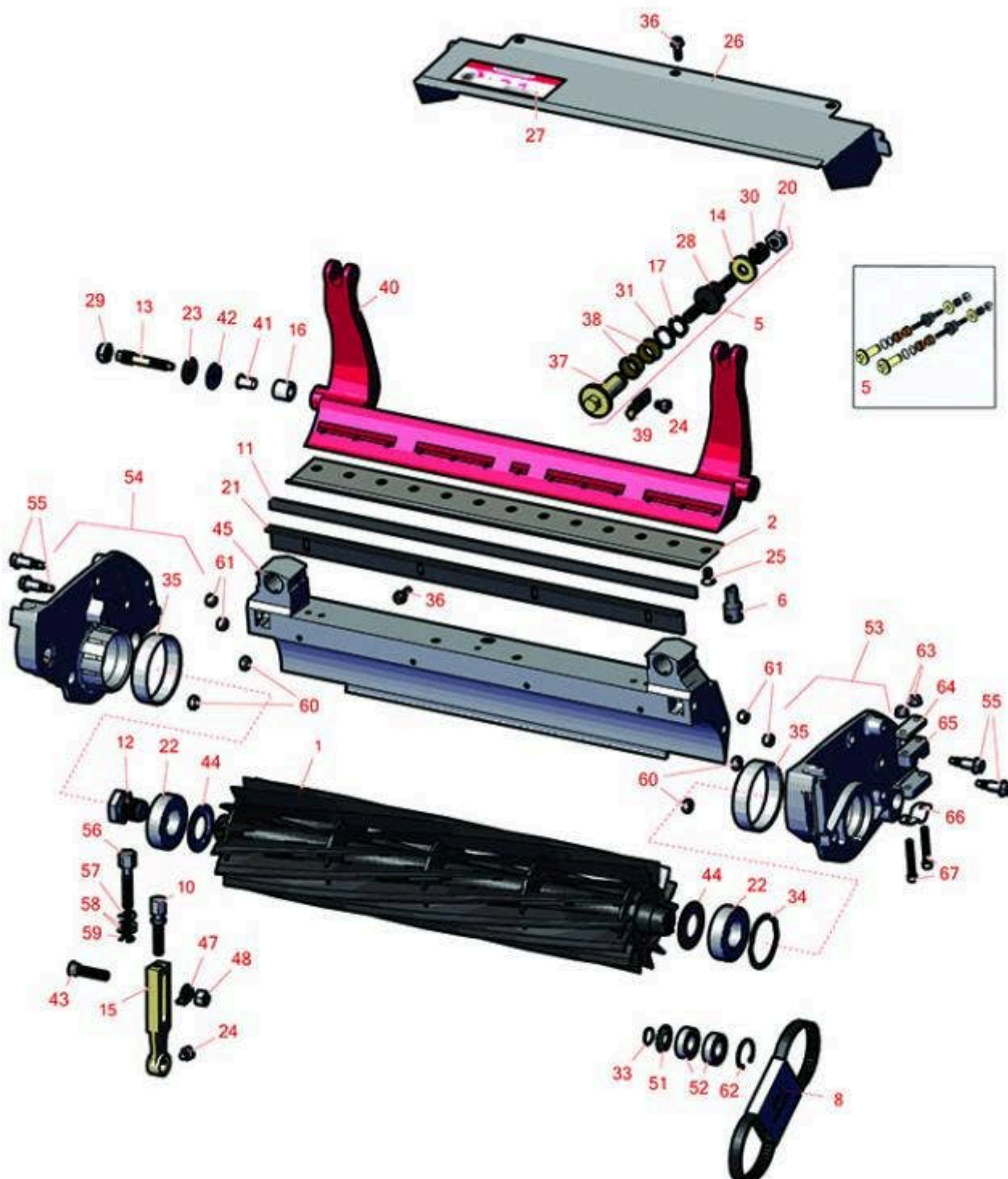




# Replaces Toro Greensmaster Flex 2120 Parts

DPA Cutting Unit - Models 04290 & 04292  
Reel & Bedknife



All original equipment manufacturers names and part numbers are used for identification purposes only, and we are in no way implying that our products are original equipment parts. Prices subject to change without notice.



# Replaces Toro Greensmaster Flex 2120 Parts

DPA Cutting Unit - Models 04290 & 04292  
Reel & Bedknife



Item No	R&R Part No.	OEM Part No.	Description	Qty Req	Order Quantity
---------	--------------	--------------	-------------	---------	----------------

## Overhaul Kit

5	<b>R121-2637</b>	121-2637	Overhaul Kit - DPA Adjusters	1	
---	------------------	----------	------------------------------	---	--

## R&R Reels, Lifetime Guaranteed

1	<b>R119-4103</b>	119-4103	Reel - 8 Blade	1	
---	------------------	----------	----------------	---	--

*Detail Description:* R&R Reel blades are manufactured from high carbon-boron alloy steel and then hardened to RC46-49 to match the temper of our bedknives and original equipment bedknives. All R&R Reels are cylindrically ground on bearing surfaces and then relief ground. Reels are then precision computer balanced for extended bearing and reel life. R&R Products Reels are guaranteed against defects in material and workmanship for the life of the reel under normal use.:

1	<b>R127-2200</b>	127-2200	Reel - 8 Blade Low Drag	1	
---	------------------	----------	-------------------------	---	--

*Tech Note:* Low Drag:

*Detail Description:* R&R Reel blades are manufactured from high carbon-boron alloy steel and then hardened to RC46-49 to match the temper of our bedknives and original equipment bedknives. All R&R Reels are cylindrically ground on bearing surfaces and then relief ground. Reels are then precision computer balanced for extended bearing and reel life. R&R Products Reels are guaranteed against defects in material and workmanship for the life of the reel under normal use.:

1	<b>R132-7340</b>	132-7340	Reel - 8 Blade Razor Series Low Drag	1	
---	------------------	----------	--------------------------------------	---	--

*Detail Description:* R&R Razor Reels are manufactured from a special high alloy steel and then hardened to RC48-51 to match the temper of our Razor bedknives and original equipment premium series bedknives. All R&R Reels are cylindrically ground on bearing surfaces, relief ground and precision computer balanced for extended bearing and reel life. R&R Products Reels are guaranteed against defects in material and workmanship for the life of the reel under normal use. You can expect up to double the life from Razor reels over standard reels.:

1	<b>R137-8511</b>	137-8511	Reel - 8 Blade Razor Series w/Bearings and Seals 21x5	1	
---	------------------	----------	---	---	--

*Detail Description:* R&R Razor Reels are manufactured from a special high alloy steel and then hardened to RC48-51 to match the temper of our Razor bedknives and original equipment premium series bedknives. All R&R Reels are cylindrically ground on bearing surfaces, relief ground and precision computer balanced for extended bearing and reel life. R&R Products Reels are guaranteed against defects in material and workmanship for the life of the reel under normal use. You can expect up to double the life from Razor reels over standard reels.:

All original equipment manufacturers names and part numbers are used for identification purposes only, and we are in no way implying that our products are original equipment parts. Prices subject to change without notice.



# Replaces Toro Greensmaster Flex 2120 Parts

DPA Cutting Unit - Models 04290 & 04292  
Reel & Bedknife



Item No	R&R Part No.	OEM Part No.	Description	Qty Req	Order Quantity
1	<b>R119-4104</b>	119-4104	Reel - 11 Blade	1	
<i>Detail Description: R&amp;R Reel blades are manufactured from high carbon-boron alloy steel and then hardened to RC46-49 to match the temper of our bedknives and original equipment bedknives. All R&amp;R Reels are cylindrically ground on bearing surfaces and then relief ground. Reels are then precision computer balanced for extended bearing and reel life. R&amp;R Products Reels are guaranteed against defects in material and workmanship for the life of the reel under normal use.:</i>					
1	<b>R127-2201</b>	127-2201	Reel - 11 Blade Low Drag	1	
<i>Tech Note: Low Drag:</i>					
<i>Detail Description: R&amp;R Reel blades are manufactured from high carbon-boron alloy steel and then hardened to RC46-49 to match the temper of our bedknives and original equipment bedknives. All R&amp;R Reels are cylindrically ground on bearing surfaces and then relief ground. Reels are then precision computer balanced for extended bearing and reel life. R&amp;R Products Reels are guaranteed against defects in material and workmanship for the life of the reel under normal use.:</i>					
1	<b>R132-7341</b>	132-7341	Reel - 11 Blade Razor Series Low Drag 21	1	
<i>Detail Description: R&amp;R Razor Reels are manufactured from a special high alloy steel and then hardened to RC48-51 to match the temper of our Razor bedknives and original equipment premium series bedknives. All R&amp;R Reels are cylindrically ground on bearing surfaces, relief ground and precision computer balanced for extended bearing and reel life. R&amp;R Products Reels are guaranteed against defects in material and workmanship for the life of the reel under normal use. You can expect up to double the life from Razor reels over standard reels.:</i>					
1	<b>R137-8512</b>	137-8512	Reel - 11 Blade Razor Series w/Bearings and Seals 21x5	1	
<i>Detail Description: R&amp;R Razor Reels are manufactured from a special high alloy steel and then hardened to RC48-51 to match the temper of our Razor bedknives and original equipment premium series bedknives. All R&amp;R Reels are cylindrically ground on bearing surfaces, relief ground and precision computer balanced for extended bearing and reel life. R&amp;R Products Reels are guaranteed against defects in material and workmanship for the life of the reel under normal use. You can expect up to double the life from Razor reels over standard reels.:</i>					
1	<b>R119-4105</b>	119-4105	Reel - 14 Blade	1	

All original equipment manufacturers names and part numbers are used for identification purposes only, and we are in no way implying that our products are original equipment parts. Prices subject to change without notice.



# Replaces Toro Greensmaster Flex 2120 Parts

DPA Cutting Unit - Models 04290 & 04292  
Reel & Bedknife



Item No	R&R Part No.	OEM Part No.	Description	Qty Req	Order Quantity
---------	--------------	--------------	-------------	---------	----------------

*Detail Description:* R&R Reel blades are manufactured from high carbon-boron alloy steel and then hardened to RC46-49 to match the temper of our bedknives and original equipment bedknives. All R&R Reels are cylindrically ground on bearing surfaces and then relief ground. Reels are then precision computer balanced for extended bearing and reel life. R&R Products Reels are guaranteed against defects in material and workmanship for the life of the reel under normal use.:

1	<b>R127-2202</b>	127-2202	Reel - 14 Blade Low Drag 21	1
---	------------------	----------	-----------------------------	---

*Tech Note:* Low Drag:

*Detail Description:* R&R Reel blades are manufactured from high carbon-boron alloy steel and then hardened to RC46-49 to match the temper of our bedknives and original equipment bedknives. All R&R Reels are cylindrically ground on bearing surfaces and then relief ground. Reels are then precision computer balanced for extended bearing and reel life. R&R Products Reels are guaranteed against defects in material and workmanship for the life of the reel under normal use.:

1	<b>R132-7342</b>	132-7342	Reel - 14 Blade Razor Series Low Drag 21	1
---	------------------	----------	---	---

*Detail Description:* R&R Razor Reels are manufactured from a special high alloy steel and then hardened to RC48-51 to match the temper of our Razor bedknives and original equipment premium series bedknives. All R&R Reels are cylindrically ground on bearing surfaces, relief ground and precision computer balanced for extended bearing and reel life. R&R Products Reels are guaranteed against defects in material and workmanship for the life of the reel under normal use. You can expect up to double the life from Razor reels over standard reels.:

1	<b>R137-8513</b>	137-8513	Reel - 14 Blade Razor Series w/Bearings and Seals 21x5	1
---	------------------	----------	---	---

*Detail Description:* R&R Razor Reels are manufactured from a special high alloy steel and then hardened to RC48-51 to match the temper of our Razor bedknives and original equipment premium series bedknives. All R&R Reels are cylindrically ground on bearing surfaces, relief ground and precision computer balanced for extended bearing and reel life. R&R Products Reels are guaranteed against defects in material and workmanship for the life of the reel under normal use. You can expect up to double the life from Razor reels over standard reels.:

## R&R Bedknives, Lifetime Guaranteed

2	<b>R108-4302</b>	108-4301, 108-4302	Bedknife - Tournament Cut Extended .125 - .500 HOC	1
---	------------------	-----------------------	---	---

All original equipment manufacturers names and part numbers are used for identification purposes only, and we are in no way implying that our products are original equipment parts. Prices subject to change without notice.



# Replaces Toro Greensmaster Flex 2120 Parts

DPA Cutting Unit - Models 04290 & 04292  
Reel & Bedknife



Item No	R&R Part No.	OEM Part No.	Description	Qty Req	Order Quantity
---------	--------------	--------------	-------------	---------	----------------

*Detail Description:* R&R Bedknives are manufactured from high carbon-boron alloy steel and then hardened to RC46-49 to match the temper of our reel blades and original equipment reels. Bedknives are surface ground on the top and front edge and straightened three times before being packaged with oil for rust prevention. All R&R Bedknives now have an increased front edge grind for added life. All R&R Bedknives are guaranteed against defects in material and workmanship under normal use for the life of the part.:

2	<b>R108-4303</b>	104-7720, 108-4303	Bedknife - Micro Cut Extended .062 - .187 HOC	1	
---	------------------	-----------------------	--	---	--

*Detail Description:* R&R Bedknives are manufactured from high carbon-boron alloy steel and then hardened to RC46-49 to match the temper of our reel blades and original equipment reels. Bedknives are surface ground on the top and front edge and straightened three times before being packaged with oil for rust prevention. All R&R Bedknives now have an increased front edge grind for added life. All R&R Bedknives are guaranteed against defects in material and workmanship under normal use for the life of the part.:

2	<b>R93-4262</b>	65-8250, 93-4262, 93-4263	Bedknife - Micro Cut .062 - .187 HOC	1	
---	-----------------	---------------------------------	---	---	--

*Detail Description:* R&R Bedknives are manufactured from high carbon-boron alloy steel and then hardened to RC46-49 to match the temper of our reel blades and original equipment reels. Bedknives are surface ground on the top and front edge and straightened three times before being packaged with oil for rust prevention. All R&R Bedknives now have an increased front edge grind for added life. All R&R Bedknives are guaranteed against defects in material and workmanship under normal use for the life of the part.:

2	<b>R93-4264</b>	57-4960, 63-8470, 93-4264	Bedknife - Low Cut .187 - 1.00 HOC	1	
---	-----------------	---------------------------------	---------------------------------------	---	--

*Detail Description:* R&R Bedknives are manufactured from high carbon-boron alloy steel and then hardened to RC46-49 to match the temper of our reel blades and original equipment reels. Bedknives are surface ground on the top and front edge and straightened three times before being packaged with oil for rust prevention. All R&R Bedknives now have an increased front edge grind for added life. All R&R Bedknives are guaranteed against defects in material and workmanship under normal use for the life of the part.:

2	<b>R94-6392</b>	62-2500, 94-6392	Bedknife - High Cut .312 - 1.00 HOC	1	
---	-----------------	---------------------	--	---	--

All original equipment manufacturers names and part numbers are used for identification purposes only, and we are in no way implying that our products are original equipment parts. Prices subject to change without notice.



# Replaces Toro Greensmaster Flex 2120 Parts

DPA Cutting Unit - Models 04290 & 04292  
Reel & Bedknife



Item No	R&R Part No.	OEM Part No.	Description	Qty Req	Order Quantity
---------	--------------	--------------	-------------	---------	----------------

*Detail Description:* R&R Bedknives are manufactured from high carbon-boron alloy steel and then hardened to RC46-49 to match the temper of our reel blades and original equipment reels. Bedknives are surface ground on the top and front edge and straightened three times before being packaged with oil for rust prevention. All R&R Bedknives now have an increased front edge grind for added life. All R&R Bedknives are guaranteed against defects in material and workmanship under normal use for the life of the part.:

2	<b>R150466</b>	63-8600, 64-6393, 94-6393	Bedknife - Super Thick .312 - 1.00 HOC	1	
---	----------------	---------------------------------	---	---	--

*Detail Description:* R&R Bedknives are manufactured from high carbon-boron alloy steel and then hardened to RC46-49 to match the temper of our reel blades and original equipment reels. Bedknives are surface ground on the top and front edge and straightened three times before being packaged with oil for rust prevention. All R&R Bedknives now have an increased front edge grind for added life. All R&R Bedknives are guaranteed against defects in material and workmanship under normal use for the life of the part.:

2	<b>R93-4263</b>	63-8560, 66-9320, 93-4263, 93-6039	Bedknife - Tournament Cut .125 - .500 HOC	1	
---	-----------------	---	--	---	--

*Detail Description:* R&R Bedknives are manufactured from high carbon-boron alloy steel and then hardened to RC46-49 to match the temper of our reel blades and original equipment reels. Bedknives are surface ground on the top and front edge and straightened three times before being packaged with oil for rust prevention. All R&R Bedknives now have an increased front edge grind for added life. All R&R Bedknives are guaranteed against defects in material and workmanship under normal use for the life of the part.:

## R&R Razor Tool Steel Bedknives, Lifetime Guaranteed

2	<b>R115-1881</b>	115-1881	Bedknife - Razor Tool Steel - 21 Tournament Cut .125 - .500 HOC	1	
---	------------------	----------	---	---	--

*Detail Description:* R&R Razor bedknives are manufactured from premium alloy tool steel steel and then hardened to RC48-51 to match the temper of our Razor reel blades and original equipment premium series reels. Bedknives are surface ground on the top and front edge and specially packaged for rust prevention. All R&R Bedknives now have an increased front edge grind for added life. All R&R Bedknives are guaranteed against defects in material and workmanship under normal use for the life of the part. You can expect up to double the life over standard bedknives.:

2	<b>R115-1880</b>	115-1880	Bedknife - Razor Tool Steel - 21 Micro Cut .062 - .187 HOC	1	
---	------------------	----------	---	---	--

All original equipment manufacturers names and part numbers are used for identification purposes only, and we are in no way implying that our products are original equipment parts. Prices subject to change without notice.



# Replaces Toro Greensmaster Flex 2120 Parts

DPA Cutting Unit - Models 04290 & 04292  
Reel & Bedknife



Item No	R&R Part No.	OEM Part No.	Description	Qty Req	Order Quantity
---------	--------------	--------------	-------------	---------	----------------

*Detail Description:* R&R Razor bedknives are manufactured from premium alloy tool steel steel and then hardened to RC48-51 to match the temper of our Razor reel blades and original equipment premium series reels. Bedknives are surface ground on the top and front edge and specially packaged for rust prevention. All R&R Bedknives now have an increased front edge grind for added life. All R&R Bedknives are guaranteed against defects in material and workmanship under normal use for the life of the part. You can expect up to double the life over standard bedknives.:

2	<b>R150492</b>	150492	Bedknife - Razor Tool Steel - 21 Micro Cut Ext	1	
---	----------------	--------	--	---	--

*Detail Description:* R&R Razor bedknives are manufactured from premium alloy tool steel steel and then hardened to RC48-51 to match the temper of our Razor reel blades and original equipment premium series reels. Bedknives are surface ground on the top and front edge and specially packaged for rust prevention. All R&R Bedknives now have an increased front edge grind for added life. All R&R Bedknives are guaranteed against defects in material and workmanship under normal use for the life of the part. You can expect up to double the life over standard bedknives.:

2	<b>R112-7475</b>	112-7475	Bedknife - Razor Tool Steel - 22 x 3/8 Fairway	1	
---	------------------	----------	--	---	--

*Detail Description:* R&R Razor bedknives are manufactured from premium alloy tool steel steel and then hardened to RC48-51 to match the temper of our Razor reel blades and original equipment premium series reels. Bedknives are surface ground on the top and front edge and specially packaged for rust prevention. All R&R Bedknives now have an increased front edge grind for added life. All R&R Bedknives are guaranteed against defects in material and workmanship under normal use for the life of the part. You can expect up to double the life over standard bedknives.:

## Service Tools

6	<b>R51-0880</b>	51-0880	Bedknife Screw Driver Tool	0	
---	-----------------	---------	----------------------------	---	--

*Detail Description:* Easily install and remove bed knife screws with the help of a ratchet with 3/8" drive. Tool manufactured with hardened alloy steel.:

## Belts

8	<b>R99-2022</b>	99-2022	Belt - Reel Drive	1	
---	-----------------	---------	-------------------	---	--

## Other Parts Available

10	<b>R110-7352</b>	110-7352	Screw - HOC 2 5/8 Stainless	2	
----	------------------	----------	-----------------------------	---	--

All original equipment manufacturers names and part numbers are used for identification purposes only, and we are in no way implying that our products are original equipment parts. Prices subject to change without notice.



# Replaces Toro Greensmaster Flex 2120 Parts

DPA Cutting Unit - Models 04290 & 04292  
Reel & Bedknife



Item No	R&R Part No.	OEM Part No.	Description	Qty Req	Order Quantity
11	R106-2619	106-2619	Seal - Strip	1	
12	R115-7263	115-7263	Bolt - Bearing Lock	1	
13	R117-9493	117-9493	Bolt - Bed Bar - Hardened	2	
14	R119-4155	119-4155	Washer - Hardened	2	
15	R115-7041	115-7041	Bracket - Front Roller 5 1/4 in	2	
16	R119-4153	119-4153	Bushing - Rubber	2	
17	R32120-93	32120-93	Snap Ring - HD	2	
20	R3296-48	119-4039, 32146-7, 3296-34, 3296-48	Locknut - 7/16-14 ESNA	2	
21	R115-3303-03	115-3303-03	Bar - Cutoff	1	
22	R115-3296	115-3296	Bearing	2	
23	R52-2860	119-4150, 52-2860	Washer - Bed Bar Pivot	2	
24	R114-9396	114-9396, 119-4067	Bolt - Hex HD 5/16-18 x 3/8	2	
25	R119-4151	119-4151	Screw - Bedknife 5/16-18 x 17/32	13	
26	R120-9588	120-9588	Grass Shield Asm	1	
27	R354083	104-7729, 354083	Decal - Danger	1	
<i>Tech Note: Ser# 316000001- 403460000:</i>					
27	R137-9706	137-9706	Decal- Warning	1	
<i>Tech Note: Ser# 403460001-:</i>					
28	R115-7039	115-7039	Screw - Adjuster - Bedbar	2	

All original equipment manufacturers names and part numbers are used for identification purposes only, and we are in no way implying that our products are original equipment parts. Prices subject to change without notice.



# Replaces Toro Greensmaster Flex 2120 Parts

*DPA Cutting Unit - Models 04290 & 04292  
Reel & Bedknife*



Item No	R&R Part No.	OEM Part No.	Description	Qty Req	Order Quantity
29	R3296-28	119-4154, 140-9234, 32127-34, 32128-7, 32128-8, 32136-7, 3296-28	Nut - 1/2-20 ESNA Jam	2	
30	R119-4156	119-4156	Spring - Compression	2	
31	R119-4164	119-4164	Washer - Wave	2	
33	R115-7143	115-7143	Spring - Wave	1	
34	R105-5700	105-5700, 115-5258	Wave Washer - Bearing	1	
35	R117-6619	117-6619	Bushing	2	
36	R119-4012	119-4012	Screw - Hx Washer HD Self Threading	7	
37	R106-5363	106-5363	Shaft - Adjusting - Bed Bar - Stainless	2	
38	R106-5344	106-5344	Bushing - Flanged and Keyed	4	
39	R99-2097	99-2097	Detent - Bed Bar Adjuster	2	
40	R99-3794-01	99-3794-01, 99-3794-03	Bed Bar - Aggressive	1	
40	R106-2648-01	106-2648-01	Bed Bar	1	
41	R52-2890	52-2890	Bushing - Flanged	2	
42	R52-2900	52-2900	Washer - Nylon	4	
43	R99-3773	99-3773	Bolt- Plow 3/8-16 x 1 3/4	2	
44	R115-3299	115-3299	Seal- Flocked	2	
45	R119-9303	105-5799, 119-9303	Frame - Crossmember	1	

All original equipment manufacturers names and part numbers are used for identification purposes only, and we are in no way implying that our products are original equipment parts. Prices subject to change without notice.



# Replaces Toro Greensmaster Flex 2120 Parts

DPA Cutting Unit - Models 04290 & 04292  
Reel & Bedknife



Item No	R&R Part No.	OEM Part No.	Description	Qty Req	Order Quantity
47	<b>R104-2603</b>	104-2603, 119-4158	Washer - HOC Bracket	2	
48	<b>R115-7193</b>	115-7193	Nut-HOC	2	
<i>Tech Note: Ser# 316000001- 403460000:</i>					
48	<b>R32128-19</b>	104-8301, 104-9301, 32128-19	Locknut - 3/8-16 Flanged Top Lock	2	
<i>Tech Note: Ser# 403460001-:</i>					
48	<b>R104-8301</b>	104-8301, 104-9301, 109-6658, 133-7570	Locknut - 3/8-16 Nylon Flanged	2	
<i>Tech Note: Ser# 403460001-:</i>					
51	<b>R115-6923</b>	115-6923	Shield - Bearing - Flocked	1	
52	<b>R115-6869</b>	115-6869	Bearing - Ball -Stainless	2	
53	<b>R119-4005</b>	119-4005	Side Plate Assy-LH Incl R117-6619	1	
54	<b>R119-4007</b>	119-4007	Side Plate Assy-RH Incl R117-6619	1	
55	<b>R115-7042</b>	115-7042	Bolt-Shoulder, Flange	4	
56	<b>R132-4586</b>	132-4586	Screw - HOC - Stainless	2	
57	<b>R121-4605</b>	121-4605	Washer - Spring - Curved	2	

All original equipment manufacturers names and part numbers are used for identification purposes only, and we are in no way implying that our products are original equipment parts. Prices subject to change without notice.



# Replaces Toro Greensmaster Flex 2120 Parts

DPA Cutting Unit - Models 04290 & 04292  
Reel & Bedknife



Item No	R&R Part No.	OEM Part No.	Description	Qty Req	Order Quantity
58	R453011	01-166-0100, 01-166-0120, 01-166-0270, 01-166-0500, 01-166-0600, 01-166-0620, 132-4593, 2356-3, 237-12, 24-10-AD, 24-11-AD, 24-11-BD, 24-12-AD, 24-12-BD, 30-9310, 32-8190, 3256-24, 3256-3, 3256-36, 3256-4, 453011, 47-9950, 48-9220, 513458, 7-0052	Washer - Flat 3/8 SAE Y/Zinc	4	
59	R1891	1891	E-Ring	2	
60	R3296-29	1-804256, 3290-357, 3296-29, 915662P	Locknut - 5/16-18 ESNA	4	
61	R32153-3	119-4038, 22-12-AJFD, 32127-35, 32146-5, 32153-3, 3296-18, 3296-29, 3296-31, N/A	Locknut - 5/16-18 ESNA Zinc	4	
61	R104-8300	104-8300, 104-8300 , 119-4041	Locknut - 5/16-18 Flanged Y/Zinc	4	

All original equipment manufacturers names and part numbers are used for identification purposes only, and we are in no way implying that our products are original equipment parts. Prices subject to change without notice.



# Replaces Toro Greensmaster Flex 2120 Parts

*DPA Cutting Unit - Models 04290 & 04292  
Reel & Bedknife*



Item No	R&R Part No.	OEM Part No.	Description	Qty Req	Order Quantity
62	<b>R458461</b>	32151-34	Snap Ring	1	
63	<b>R119-4040</b>	119-4040	Nut - 1/4-20 Fl Locknut	4	
64	<b>R105-5711</b>	105-5711, 119-4165	Shim - Roller	2	
65	<b>R105-5710</b>	105-5710, 119-4166	Spacer - Roller	2	
66	<b>R105-5712</b>	105-5712, 119-4157	Retainer - Roller	2	
67	<b>R119-4035</b>	119-4035	Bolt - 1/4-20 x 1 3/4 Soc HD Cap Scr	4	

All original equipment manufacturers names and part numbers are used for identification purposes only, and we are in no way implying that our products are original equipment parts. Prices subject to change without notice.