

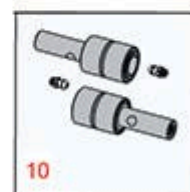
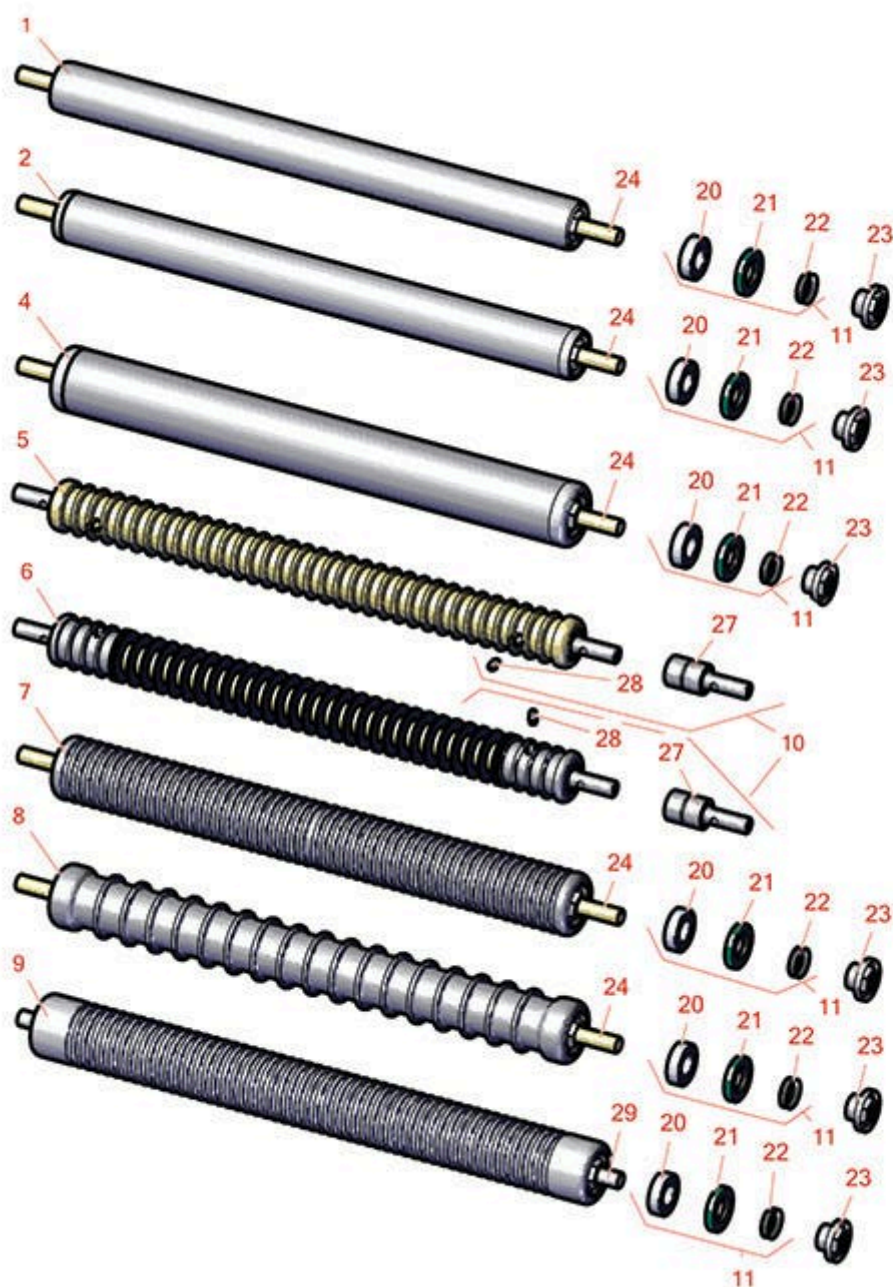


Replaces Toro Greensmaster eFlex 2100

Parts

DPA Cutting Unit - Model 04251 & 04252

Rollers



All original equipment manufacturers names and part numbers are used for identification purposes only, and we are in no way implying that our products are original equipment parts. Prices subject to change without notice.



Replaces Toro Greensmaster eFlex 2100

Parts

DPA Cutting Unit - Model 04251 & 04252
Rollers



Item No	R&R Part No.	OEM Part No.	Description	Qty Req	Order Quantity
1	R115-7356	115-7356	Roller - Smooth Tubular Aluminum - 2 in Dia	1	
<i>Detail Description: Constructed with a through shaft, this light weight aluminum roller uses a through shaft and ball bearings.:</i>					
2	R140-5560	105-5776, 106-6945, 107-3509, 119-4093, 120-9595, 140-5560	Roller - Smooth 2 in Steel Rear	1	
4	R115-7388	115-7388, 140-5681	Roller - Smooth Tubular Steel 2-1/2 in Dia	1	
<i>Detail Description: Constructed with a through shaft, this steel roller uses a through shaft and ball bearings.:</i>					
5	R52-3200	12-0840, 52-3200, 71-1550	Roller - Grooved Machined Solid Steel	1	
<i>Detail Description: Machined from solid steel, this heavy weight roller uses greasable "water-pump" style bearings.:</i>					
6	R21-6540	21-6540	Roller - Grooved Repairable Steel	1	
<i>Detail Description: Constructed with greasable "water-pump" style bearings, this roller can be repaired by unscrewing the ends and replacing the series of washers and spacers.:</i>					
7	R115-7360	115-7360	Roller - Narrow Grooved Machined Aluminum - 2 1/2	1	
<i>Detail Description: Constructed with a through shaft, this aluminum roller is machined with narrow grooves and uses ball bearings.:</i>					
8	R115-7386	115-7386	Roller - Wide Grooved Machined Aluminum - 2-1/2 Dia	1	
<i>Detail Description: Constructed with a through shaft, this aluminum roller is machined with 1-1/8" wide grooves for the least amount of ground contact and uses ball bearings.:</i>					

All original equipment manufacturers names and part numbers are used for identification purposes only, and we are in no way implying that our products are original equipment parts. Prices subject to change without notice.



Replaces Toro Greensmaster eFlex 2100 Parts

DPA Cutting Unit - Model 04251 & 04252
Rollers



Item No	R&R Part No.	OEM Part No.	Description	Qty Req	Order Quantity
9	R121-4675	121-4675	Roller - Extended Machined Grooved	1	
Overhaul Kits					
10	R107-1588	107-1588	Overhaul Kit - Roller	1	
<i>Detail Description: Includes 2 ea.: R302-5 Grease Fittings & R52-3180 Bearings:</i>					
11	R107-1594	107-1594	Overhaul Kit - Roller	1	
<i>Detail Description: Includes 2 ea.: R106-6941 Seals, R106-6942 V-Rings & R251-347 Bearings:</i>					
Other Parts Available					
20	R251-347	251-347, 72-5690	Bearing - Ball	2	
21	R106-6941	106-6941	Seal - Double Lip	2	
22	R106-6942	106-6942	V-Ring - Roller	2	
23	R114-3745	106-6939, 108-3151, 114-3745, 114-5411	Locknut - Bearing - Stainless	2	
24	R119-4090	119-4090	Shaft - Roller - Hardened	1	
27	R52-3180	21-6410, 52-3180	Bearing - Front Roller	2	
28	R302-5	21-6010, 302-11, 302-37, 302-47, 302-5, 302-57, 302-58, 302-6, 31-0300, 32-9660, 60-0800, 62-3880, 92-4181	Fitting - Grease	2	

All original equipment manufacturers names and part numbers are used for identification purposes only, and we are in no way implying that our products are original equipment parts. Prices subject to change without notice.



Replaces Toro Greensmaster eFlex 2100 Parts

*DPA Cutting Unit - Model 04251 & 04252
Rollers*



Item No	R&R Part No.	OEM Part No.	Description	Qty Req	Order Quantity
29	R120-5404	120-5404	Shaft- Roller	1	

All original equipment manufacturers names and part numbers are used for identification purposes only, and we are in no way implying that our products are original equipment parts. Prices subject to change without notice.