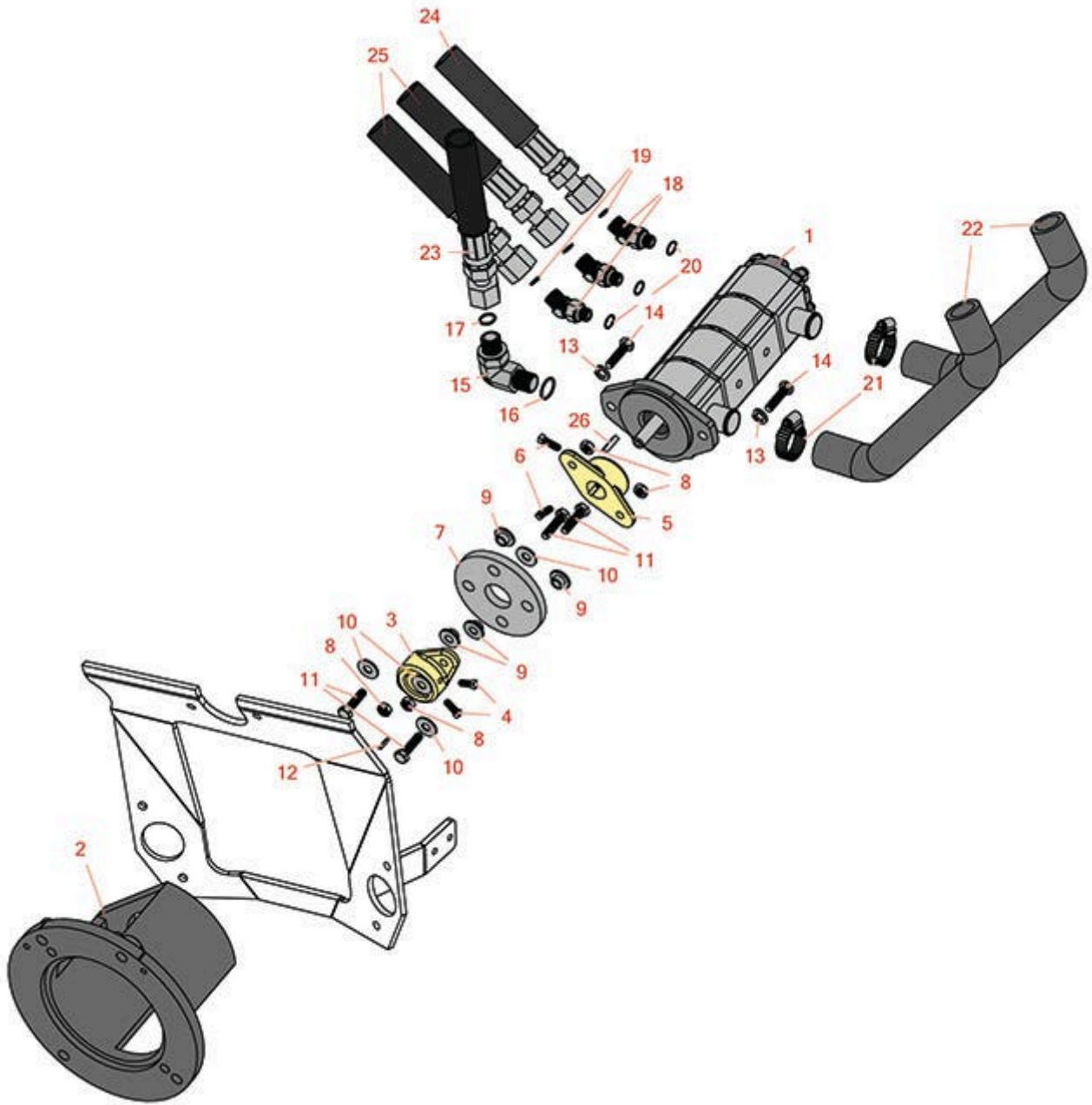




Replaces Toro Greensmaster 3050 Parts

Traction Unit - Model 04351

Hydraulic Gear Pump



All original equipment manufacturers names and part numbers are used for identification purposes only, and we are in no way implying that our products are original equipment parts. Prices subject to change without notice.



Replaces Toro Greensmaster 3050 Parts

Traction Unit - Model 04351

Hydraulic Gear Pump



Item No	R&R Part No.	OEM Part No.	Description	Qty Req	Order Quantity
1	R107-2565	107-2565, 107-2565-03	Gear Pump - 4 Section	1	
2	R83-1060-03	83-1060, 83-1060-03	Adapter - Pump	1	
3	R27-1960	110-5236, 27-1960	Hub - Engine	1	
4	R3241-2	01-163-0100, 31-6770, 3241-1, 3241-2	Screw - Set Sq.HD. 1/4 x 5/8	2	
5	R27-1970	27-1970	Hub - Pump	1	
6	R3241-6	3241-6	Screw - Set Sq. HD. 1/4 x3/4	2	
7	R44-2230	115-4523, 27-6560, 44-2230, 80-8650	Coupling - Rubber - Pump	1	
8	R3296-29	1-804256, 3290-357, 3296-29, 915662P	Locknut - 5/16-18 ESNA	4	
9	R27-6600	27-6600	Spacer - Pump Coupling	4	
10	R453009	01-166-0400, 24-10-BD, 24-9-AD, 32-9650, 3256-2, 3256-23, 3256-3, 3256-67, 3290-217, 3556-3, 4-2390, 7-0152	Washer - Flat 5/16 SAE	4	

All original equipment manufacturers names and part numbers are used for identification purposes only, and we are in no way implying that our products are original equipment parts. Prices subject to change without notice.



Replaces Toro Greensmaster 3050 Parts

Traction Unit - Model 04351

Hydraulic Gear Pump



Item No	R&R Part No.	OEM Part No.	Description	Qty Req	Order Quantity
11	R400190	01-150-0720, 01-178-0510, 30-8680, 322-6, 513343	Bolt - Hex HD 5/16-18 x 1-1/4 GR5	4	
12	R1164	10-7070, 48-004-1931, 62-3380, 66-004-3221, 85-9020	Key - 1/4 x 1/4 x 1	2	
13	R3253-21	215-51, 30-8470, 3253-21, Jul-12	Washer - Lock 3/8	2	
14	R400264	01-150-0180, 01-178-0610, 20-48-AD, 20-48-AGD, 32-9160, 3224-3, 323-29, 323-7, 400264, 908035P	Bolt - Hex HD 3/8-16 x 1-1/4	2	
15	R340-105	340-105	Hydraulic Fitting	1	
16	R237-80	237-80, 327-80	O-Ring	1	
17	R237-30	23-6320, 237-30	O-Ring - Seal	1	
18	R340-87	340-106, 340-87	Hydraulic Fitting	3	
19	R237-22	107-8844, 237-22, 237-78	O-Ring	3	
20	R237-42	237-42, 31-4160	O-Ring	3	

All original equipment manufacturers names and part numbers are used for identification purposes only, and we are in no way implying that our products are original equipment parts. Prices subject to change without notice.



Replaces Toro Greensmaster 3050 Parts

Traction Unit - Model 04351

Hydraulic Gear Pump



Item No	R&R Part No.	OEM Part No.	Description	Qty Req	Order Quantity
21	R2412-34	2412-34, 31-0120	Clamp - Hose .75-1.5	1	
22	R83-0910	83-0910	Hose - Outside Inlet - Pump	2	
22	R95-5966	95-5966	Hose - Inlet - Pump - Metal Tank	2	
23	R112-0205	112-0205	Hydraulic Hose Assy - LH Drive Motor	1	
24	R98-2150	98-2150	Hydraulic Hose Assy - Valve to Pump	1	
25	R98-0649	98-0649	Hydraulic Hose Assy - Valve to Pump	2	
26	R5-0946	5-0946	Key - 3/16 x 3/16 x 1-1/8	1	

All original equipment manufacturers names and part numbers are used for identification purposes only, and we are in no way implying that our products are original equipment parts. Prices subject to change without notice.