

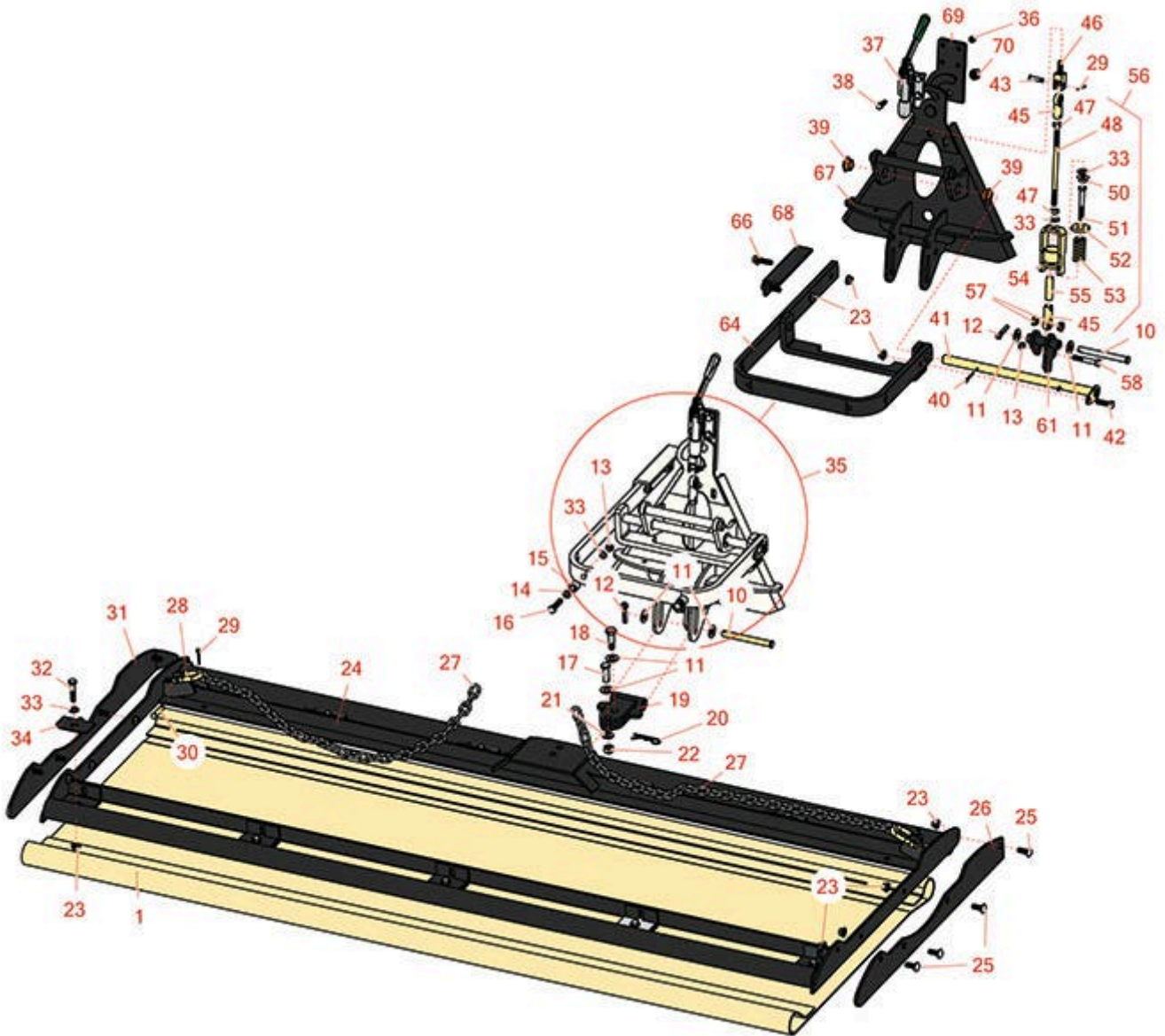


Replaces R&R Products Sand Max 521LP

Parts

Attachments

Fast Attach Drag Mat Carrier



All original equipment manufacturers names and part numbers are used for identification purposes only, and we are in no way implying that our products are original equipment parts. Prices subject to change without notice.



Replaces R&R Products Sand Max 521LP Parts

Attachments
Fast Attach Drag Mat Carrier



Item No	R&R Part No.	OEM Part No.	Description	Qty Req	Order Quantity
1	R08758		Cocoa Drag Mat 6' x 3' - to Fit Carrier Frame	1	
<i>Tech Note: Sold Separately:</i>					
<i>Detail Description: Brush in topdressing on greens or use on athletic fields for a premium finish on dry, level surfaces. This 3/4 in thick 6 ft W x 3 ft L natural fiber mat is designed to whisk away dirt and moisture before it can damage clean surfaces. Ideal with the R&R Sand Max or Toro Sand Pro Drag Mat Carrier System.:</i>					
1	R08757		Keystone Steel Drag Mat - 6' x 3' to Fit Drag Frame	1	
<i>Tech Note: Sold Separately:</i>					
<i>Detail Description: Perfectly level and smooth the surface on dirt, gravel, clay or sand. Ideal for top dressing and breaking up aerification plugs on golf course greens and fairways, dragging baseball fields and track surfaces, sand trap raking, and debris removal before laying sod or grass seed. Rust resistant. Reversible. Rolls up like carpet for easy cleaning. Mesh size 1" x 1", Crimp 3/8" deep x .046" thick, 13 gauge (.0915") galvanized steel rods. Wt. 1.6 lbs/sq ft.:</i>					
10	R283-83	283-83, R42194, R93-5343	Pin - Clevis	2	
11	R3256-26	3256-26, R01-166-0540, R01-166-0820, R17-2530, R24-13-BD, R30-8570, R356206, R48-9390	Washer - 1/2 in	6	
12	R3272-11	R01-151-0010, R01-151-0040, R28-18-D, R28-28-D, R3211-72	Pin - Cotter	2	
13	R3296-44		Nut - 3/8-16 Heavy Jam ESNA Lock	3	

All original equipment manufacturers names and part numbers are used for identification purposes only, and we are in no way implying that our products are original equipment parts. Prices subject to change without notice.



Replaces R&R Products Sand Max 521LP

Parts

Attachments

Fast Attach Drag Mat Carrier



Item No	R&R Part No.	OEM Part No.	Description	Qty Req	Order Quantity
14	R453009	3256-3, R01-166-0400, R24-10-BD, R24-9-AD, R24H1136, R32-9650, R3256-2, R3256-23, R3256-67, R3290-217, R3556-3, R4-2390, R452006, R7-0152	Washer - Flat 5/16 SAE	4	
15	R98-8895		Spacer	2	
16	R323-8	R01-150-0060, R01-178-0612, R19H2633, R20-49-AD, R20-49-AGD, R3273-41, R908036P	Bolt - Hex HD 3/8-16 x 1-1/2 GR8	2	
17	R283-8	R17-3670, R7-2035	Clevis Pin - 1/2 x 1-27/64	1	
18	R80-2050	80-2050	Bolt - Shoulder	1	
19	R114-0641-03	R112-7100-03	Pivot Assy	1	
20	R3290-355	R01-159-0050, R58-5370	Pin - Bridge - Snap	1	
21	R187-0	3256-25, R3256-25, R7-0032	Washer - Flat 7/16 SAE	1	
22	R3296-48	3296-48, R119-4039, R32146-7, R3296-34	Locknut - 7/16-14 ESNA	1	
23	R104-8301	R109-6658, R133-7570	Locknut - 3/8-16 Nylon Flanged	22	

All original equipment manufacturers names and part numbers are used for identification purposes only, and we are in no way implying that our products are original equipment parts. Prices subject to change without notice.



Replaces R&R Products Sand Max 521LP

Parts

Attachments

Fast Attach Drag Mat Carrier



Item No	R&R Part No.	OEM Part No.	Description	Qty Req	Order Quantity
24	R110-1350-03		Drag Frame Assy	1	
25	R3231-2	R01-157-0170, R01-173-0608, R900063P	Bolt - Carriage 3/8-16 x 1	8	
26	R110-8124-03		Plate-Skid - LH	1	
27	R110-1363		Chain-Proof - 32 Links	2	
28	R5-2942		Shackle	2	
29	R3272-10	R01-151-0120	Pin - Cotter 1/8 x 3/4	3	
30	R283-10	R100292	Pin - Clevis	2	
31	R110-8148-03		Plate-Skid - RH	1	
32	R323-9	323-9, R01-150-0190, R01-150-1540, R01-178-0614, R107229, R20-50-AD, R20-50-AGD, R30-9430, R32105-4, R3224-5, R513363, R513364, R5377, R908037P	Bolt - Hex HD 3/8-16 x 1-3/4	11	

All original equipment manufacturers names and part numbers are used for identification purposes only, and we are in no way implying that our products are original equipment parts. Prices subject to change without notice.



Replaces R&R Products Sand Max 521LP

Parts

Attachments

Fast Attach Drag Mat Carrier



Item No	R&R Part No.	OEM Part No.	Description	Qty Req	Order Quantity
33	R453011	3256-24, 453011, R01-166-0100, R01-166-0120, R01-166-0270, R01-166-0500, R01-166-0600, R01-166-0620, R132-4593, R237-12, R24-10-AD, R24-11-AD, R24-11-BD, R24-12-AD, R24-12-BD, R30-9310, R32-8190, R3256-24, R3256-3, R3256-36, R3256-4, R47-9950	Washer - Flat 3/8 SAE Y/Zinc	14	
34	R110-1358-03		Plate - Retainer - Ma	11	
35	R151070		Hitch Assy - Rear - Triangular - Fits Drag Mat	1	
36	R32153-3	R119-4038, R22-12-AJFD, R32127-35, R32146-5, R3296-18, R3296-31, RJ317000	Locknut - 5/16-18 ESNA Zinc	4	
37	R151071		Clamp - Toggle	1	

All original equipment manufacturers names and part numbers are used for identification purposes only, and we are in no way implying that our products are original equipment parts. Prices subject to change without notice.



Replaces R&R Products Sand Max 521LP Parts

Attachments

Fast Attach Drag Mat Carrier



Item No	R&R Part No.	OEM Part No.	Description	Qty Req	Order Quantity
38	R322-5	322-5, R01-178-0508, R19H1905, R20-26-AD, R20-26-AGD, R30-9000, R400188, R513341, R519755, R908019P	Bolt - Hex HD 5/16-18 x 1	4	
39	R27-9080		Bearing - Flanged	2	
40	R3272-17	R28-26-C, R28-26-D, R30-1230	Pin-Cotter	3	
41	R110-3362		Pivot Bar Assy	1	
42	R400264	323-7, R01-150-0180, R01-178-0610, R19H1732, R20-48-AD, R20-48-AGD, R32-9160, R3224-3, R323-29, R323-7, R400264, R908035P	Bolt - Hex HD 3/8-16 x 1-1/4	1	
43	R283-61	R86-2140	Pin - Clevis 5/16 x 1-1/8	1	
45	R92-7008		Rod End - Female	2	
46	R151072		Adapter - Link Assy	1	
47	R3220-3	R01-191-0624, R3290-149	Nut - Jam Ball Joint	2	
48	R110-8108		Rod - Link	1	
50	R32128-12		Locknut - 3/8-24 Flanged Top Lock	1	

All original equipment manufacturers names and part numbers are used for identification purposes only, and we are in no way implying that our products are original equipment parts. Prices subject to change without notice.



Replaces R&R Products Sand Max 521LP Parts

Attachments

Fast Attach Drag Mat Carrier



Item No	R&R Part No.	OEM Part No.	Description	Qty Req	Order Quantity
51	R3211-12		Bolt - Hx HD 3/8-24	1	
52	R110-8114		Washer	1	
53	R66-7230		Spring - Compression	1	
54	R110-8111-01		Yoke Assy	1	
55	R110-8110		Spacer	1	
56	R151075		Link Assy - Fast Connect Hitch	1	
57	R110-8116		Spacer - Link	2	
58	R323-11	R01-150-1440, R01-178-0618, R20-52-AD, R3224-7	Bolt - 3/8-16 x 2 1/4 GR5	1	
61	R110-8154		Latch Assy	1	
64	R112-1408		Lift Arm Assy	1	
66	R3234-24	R3234-8, R66-9301	Bolt - Hex Ser Was HD 3/8-16 x 1-1/4	2	
67	R112-1405		Adapter Assy - Fast Connect Assy	1	
68	R115-2090		Pad - Wear	1	
69	R151073		Adapter Plate	1	
70	RF5003	3296-23, R32127-29, R32131-5, R32132-5, R3296-23, R64229-05, RZS04021-07	Locknut - ESNA 1/2-13	1	

All original equipment manufacturers names and part numbers are used for identification purposes only, and we are in no way implying that our products are original equipment parts. Prices subject to change without notice.