

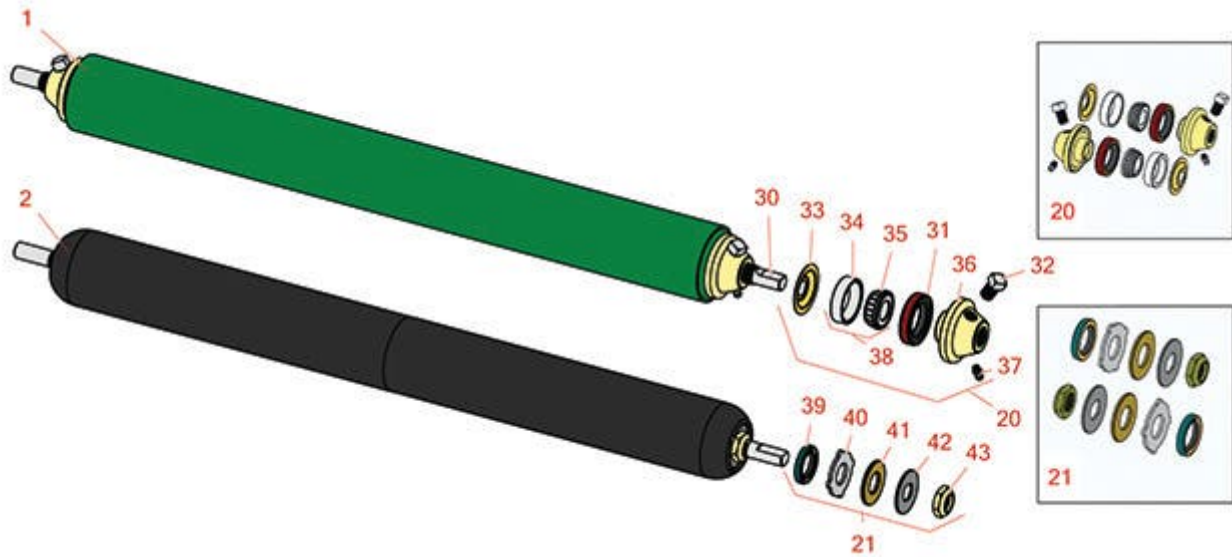


Replaces R&R Products Power Lift

5133GD Parts

Standard Cutting Unit

Optional Rollers



All original equipment manufacturers names and part numbers are used for identification purposes only, and we are in no way implying that our products are original equipment parts. Prices subject to change without notice.



Replaces R&R Products Power Lift 5133GD Parts

Standard Cutting Unit
Optional Rollers



Item No	R&R Part No.	OEM Part No.	Description	Qty Req	Order Quantity
---------	--------------	--------------	-------------	---------	----------------

R&R Rollers

1	R700500G		Roller - Smooth Tubular Steel Regreasable	0	
---	----------	--	---	---	--

Detail Description: Constructed with a through shaft, this heavy duty roller uses greasable tapered bearings for extended life.:

2	R1013902	R101390	Roller - Smooth UHMW Polyethylene	0	
---	----------	---------	-----------------------------------	---	--

Detail Description: Machined from solid UHMW, this low maintenance roller uses a 1" solid stainless steel shaft and requires no grease. UHMW material prevents build-up of debris.:

Overhaul Kits

20	R700505		Conversion Kit - Roller	1	
----	---------	--	-------------------------	---	--

Detail Description: Includes: 2 each: R254-78 Bearing Cones, R254-79 Bearing Cups, R328062 Seals, R412063 Square Head Set Screws, R700501 Roller Ends & R700502 Grease Retainers.:

21	R101399		Overhaul Kit - UHMW 2 Pc Roller	1	
----	---------	--	---------------------------------	---	--

Detail Description: Fits all R&R 2-1/2" - 3-1/2" Dia. Black UHMW Plastic Rollers that do not use ball bearings.. Includes 2 ea.: R1503230 Star Washers, R1503470 Seals, R150333 Thrust Washers, R3296-15 Locknuts, R1503471 Bronze Thrust Washers:

Other Parts Available

30	R328058	R002833	Shaft - Roller	1	
----	---------	---------	----------------	---	--

31	R328062		Seal - Roller	2	
----	---------	--	---------------	---	--

32	R412063		Screw - Sq. HD. Set	2	
----	---------	--	---------------------	---	--

33	R700502	R29-3440	Retainer - Grease	2	
----	---------	----------	-------------------	---	--

All original equipment manufacturers names and part numbers are used for identification purposes only, and we are in no way implying that our products are original equipment parts. Prices subject to change without notice.



Replaces R&R Products Power Lift 5133GD Parts

Standard Cutting Unit
Optional Rollers



Item No	R&R Part No.	OEM Part No.	Description	Qty Req	Order Quantity
34	R254-79	R01-103-0060, R01-103-0130, R1-633584, R252-106, R255820, R32-7800, R32-9590, R4121175, R70030-50301, R808088, RB4015, RG-372, RJD8226	Cup - Bearing	2	
<i>Detail Description: Use R254-79M installation mandrel to properly install race.:</i>					
35	R254-78	R01-102-0060, R01-102-0130, R1-633585, R255815, R32-7790, R32-9580, R385174, R4121174, R4135152, R70030-50302, R93-4813, RB4512, RG-373, RJD8188	Tapered Bearing Cone	2	
36	R700501		Roller End - Regreasable	2	

All original equipment manufacturers names and part numbers are used for identification purposes only, and we are in no way implying that our products are original equipment parts. Prices subject to change without notice.



Replaces R&R Products Power Lift 5133GD Parts

Standard Cutting Unit
Optional Rollers



Item No	R&R Part No.	OEM Part No.	Description	Qty Req	Order Quantity
37	R302-5	R173-0, R21-6010, R255825, R302-37, R302-47, R302-57, R302-58, R302-6, R31-0300, R32-9660, R471214, R471223, R471226, R60-0800, R62-3880, R92-4181, RJD7797, RJD7842, RJD7844, RM0004, RZS48114-04	Fitting - Grease	2	
38	R500534	R2208006, RPT230030, RZS482621	Bearing - with Cup	4	
<i>Detail Description: Kit includes: 1 ea R254-78- Bearing Cone & R254-79 Bearing Cone:</i>					
39	R1503470		Seal - Inner Wiper	1	
40	R1503230		Washer - Thrust Outer Keyed	1	
41	R1503471		Washer - Thrust SAE660 Bronze	1	
42	R150333	R150447	Washer - Flat Keyed Outer SS	1	
43	R3296-15	367029, R1503473, R32118-5, R32127-23, R32127-47, R367029, R445748, RG-371, RN101345	Locknut - 3/4-16 Nylon Jam	1	

All original equipment manufacturers names and part numbers are used for identification purposes only, and we are in no way implying that our products are original equipment parts. Prices subject to change without notice.