

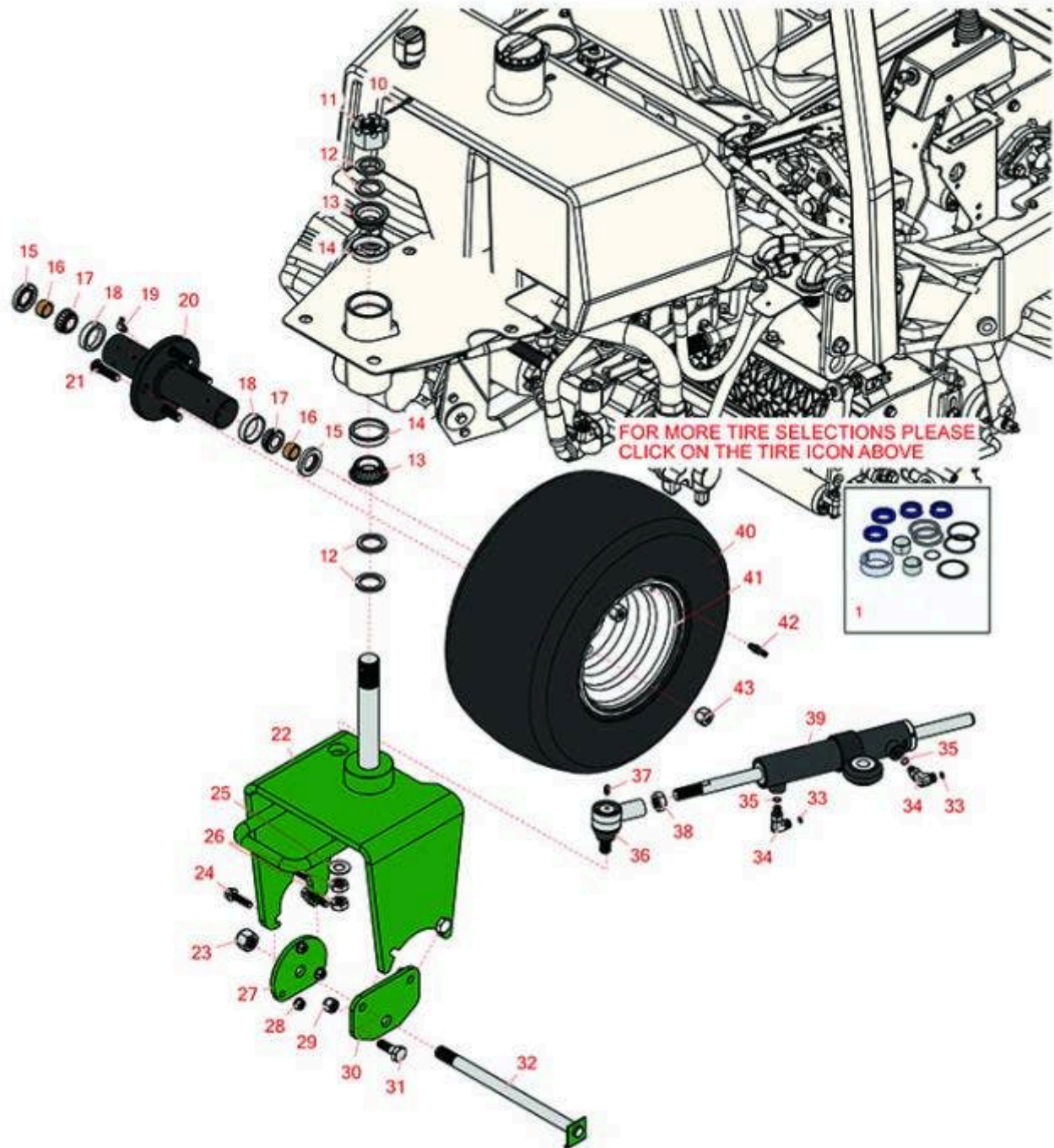


Replaces R&R Products Greens Max

2200 Parts

Traction Unit

Rear Wheel



All original equipment manufacturers names and part numbers are used for identification purposes only, and we are in no way implying that our products are original equipment parts. Prices subject to change without notice.



Replaces R&R Products Greens Max

2200 Parts

Traction Unit

Rear Wheel



Item No	R&R Part No.	OEM Part No.	Description	Qty Req	Order Quantity
---------	--------------	--------------	-------------	---------	----------------

Overhaul Kits and Service Tools

1	R112-9170		Seal Kit - Fits R112-0297	1	
---	------------------	--	---------------------------	---	--

Tires

40	TIRES		Click Here to View Complete Tire Selection	0	
40	RCT510981		Tire - 18 - 9.50 x 8 (4 Ply) Carlisle Smooth	1	
40	RTK958-4SM-I	RTK958-2SM-I	Tire - 18x9.50-8 (4 Ply) Kenda Smooth	1	
41	R217-60	R242-49	Wheel - with Valve Stem - White	1	
42	R232-27	R232-31, R360111	Stem - Valve w/ Cap	1	

Other Parts Available

10	R3272-37		Pin - Cotter 1/4 x 2-1/2	1	
11	R32136-9		Nut - 1-1/4-12 Slotted	1	
12	R18-6320		Washer - Steering Fork	4	
13	R254-70	R115-9472	Tapered Bearing Cone - w/Seal	2	
14	R254-61	R01-103-0090, R115-9471, R254-69, R32-8140, R92-0611, R93-4850	Cup	2	
15	R253-111	R253-108, RE1029	Seal	2	
16	R74-3730	R217-96	Spacer	2	

All original equipment manufacturers names and part numbers are used for identification purposes only, and we are in no way implying that our products are original equipment parts. Prices subject to change without notice.



Replaces R&R Products Greens Max

2200 Parts

Traction Unit

Rear Wheel



Item No	R&R Part No.	OEM Part No.	Description	Qty Req	Order Quantity
17	R254-78	R01-102-0060, R01-102-0130, R1-633585, R255815, R32-7790, R32-9580, R385174, R4121174, R4135152, R70030-50302, R93-4813, RB4512, RG-373, RJD8188	Tapered Bearing Cone	2	
18	R254-79	R01-103-0060, R01-103-0130, R1-633584, R252-106, R255820, R32-7800, R32-9590, R4121175, R70030-50301, R808088, RB4015, RG-372, RJD8226	Cup - Bearing	2	
<i>Detail Description: Use R254-79M installation mandrel to properly install race.:</i>					
19	R700414	R302-11, R302-4, R32-8170	Zerk - Grease 1/4-28 45 Deg	1	
20	R75-9440	R217-95	Hub - Rear Wheel - Incl Wheel Studs	1	
<i>Detail Description: Hub includes 4ea R10-6830 Wheel Studs:</i>					
21	R10-6830		Stud - 1/2-20 x 1 3/4	4	
22	R112-0285G		Fork - Castor - Green	1	
23	R3296-67		Locknut - 3/4-16 Heavy Jam RH Thread	1	
24	R3234-19		Bolt - Hex Washer 3/8-16x1-3/4	3	

All original equipment manufacturers names and part numbers are used for identification purposes only, and we are in no way implying that our products are original equipment parts. Prices subject to change without notice.



Replaces R&R Products Greens Max

2200 Parts

Traction Unit

Rear Wheel



Item No	R&R Part No.	OEM Part No.	Description	Qty Req	Order Quantity
25	R3256-27	R24-15-BD, R32-7820, R7-0131, R7-2178	Washer - Flat 5/8 SAE	1	
26	R443828	R01-191-1018, R3220-6, R915089P	Nut - 5/8-18 Hex	2	
27	R99-1486G		Plate - Adapter - Green	1	
28	R3296-39	3296-39, R32127-25, R32128-36, R3296-17, R3296-22, R915663P, R99-7443	Locknut - 3/8-16 Nylon	3	
29	RF5003	3296-23, R32127-29, R32131-5, R32132-5, R3296-23, R64229-05, RZS04021-07	Locknut - ESNA 1/2-13	2	
30	R99-1485G		Plate - Adapter - Green	1	
31	R400408	325-6, R01-150-0090, R01-178-0812, R20-87-AD, R20-87-AGD, R20-87-AGF, R3226-2, R325-6, R513376, R513378	Bolt - Hex HD 1/2-13 x 1-1/2	2	
32	R5-3934		Bolt - Steering Caster Fork	1	
33	R237-21		O-Ring	2	
34	R340-132		Hydraulic Fitting - 90 Deg	2	

All original equipment manufacturers names and part numbers are used for identification purposes only, and we are in no way implying that our products are original equipment parts. Prices subject to change without notice.



Replaces R&R Products Greens Max

2200 Parts

Traction Unit

Rear Wheel



Item No	R&R Part No.	OEM Part No.	Description	Qty Req	Order Quantity
35	R237-22	R107-8844, R232-72, R237-78	O-Ring	2	
36	R2411-46	R2411-46-03	End - Tie Rod - LH	1	
37	R302-5	R173-0, R21-6010, R255825, R302-37, R302-47, R302-57, R302-58, R302-6, R31-0300, R32-9660, R471214, R471223, R471226, R60-0800, R62-3880, R92-4181, RJD7797, RJD7842, RJD7844, RM0004, RZS48114-04	Fitting - Grease	1	
38	R84-5300		Nut - Jam 11/16-18 RH	1	
39	R112-0297	R105-0411	Steering Cylinder	1	
43	R242-50		Nut - 1/2-20 Wheel	4	

All original equipment manufacturers names and part numbers are used for identification purposes only, and we are in no way implying that our products are original equipment parts. Prices subject to change without notice.