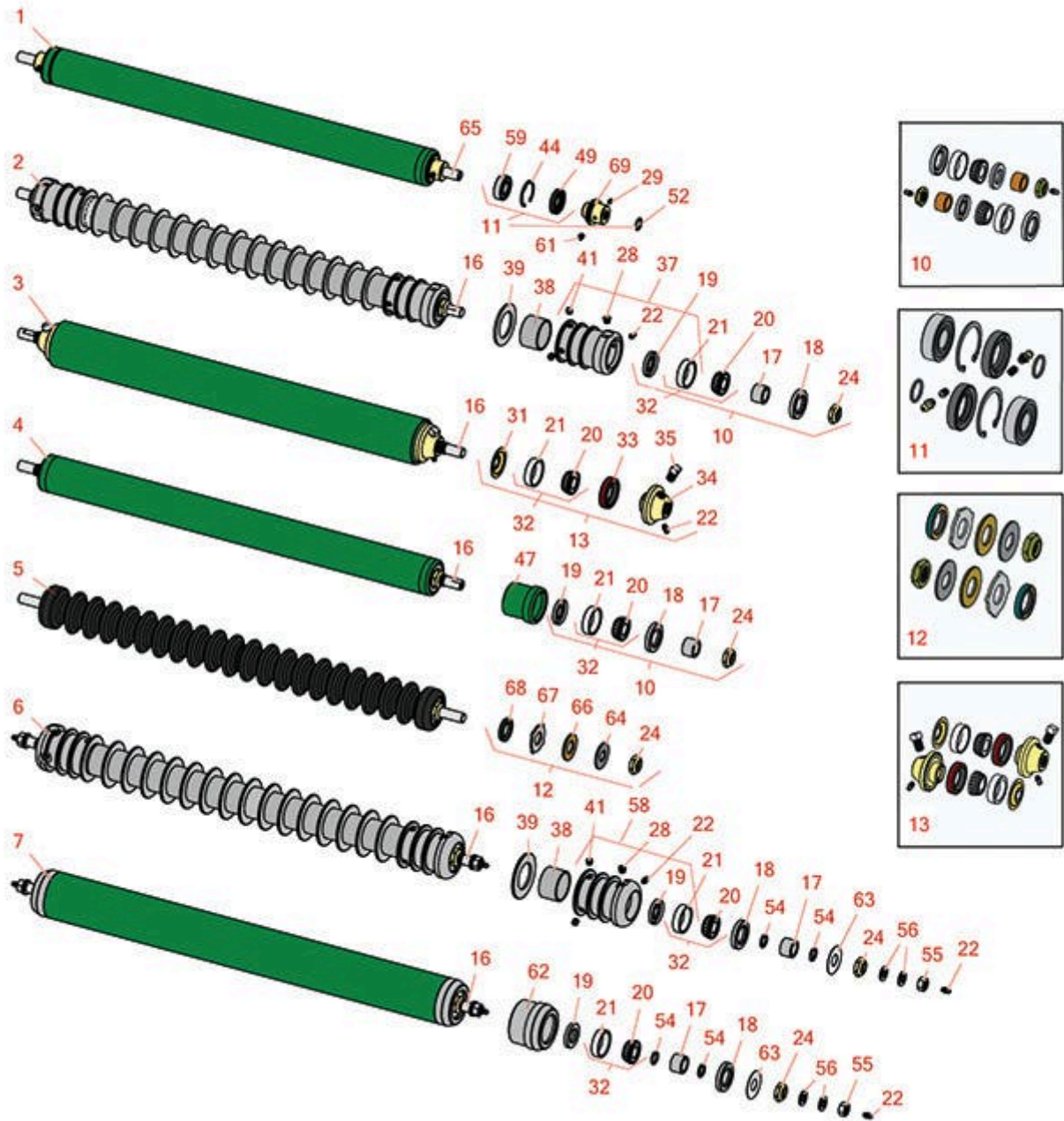




# Replaces Ransomes 213, 350 & 5/7

## Fairway Parts

Cutting Unit  
Rollers



All original equipment manufacturers names and part numbers are used for identification purposes only, and we are in no way implying that our products are original equipment parts. Prices subject to change without notice.



# Replaces Ransomes 213, 350 & 5/7 Fairway Parts

Cutting Unit  
Rollers



Item No	R&R Part No.	OEM Part No.	Description	Qty Req	Order Quantity
---------	--------------	--------------	-------------	---------	----------------

## R&R Rollers

1	<b>RLMAA356</b>	LMAA356	Roller - Smooth Tubular Steel	0	
<i>Tech Note: Constructed with a through shaft, this steel roller uses a through shaft and ball bearings. Body Length: 27-5/8" &amp; Shaft Length: 31-9/16":</i>					
2	<b>RLMAA356RG</b>		Roller - Grooved Repairable Steel	0	
<i>Tech Note: Constructed with a through shaft and greasable tapered bearings for extended life, this roller can be repaired by unscrewing the ends and replacing the series of washers and spacers. Body Length: 27-1/2" &amp; Shaft Length: 31-3/4":</i>					
2	<b>R500620R</b>		Roller - Grooved Repairable Steel	0	
<i>Tech Note: Constructed with a through shaft and greasable tapered bearings for extended life, this roller can be repaired by unscrewing the ends and replacing the series of washers and spacers. Body Length: 30-1/2" &amp; Shaft Length: 35":</i>					
2	<b>R500630</b>		Roller - Grooved Repairable Steel	0	
<i>Tech Note: Constructed with a through shaft and greasable tapered bearings for extended life, this roller can be repaired by unscrewing the ends and replacing the series of washers and spacers. Body Length: 28-1/4" &amp; Shaft Length: 31-3/4":</i>					
2	<b>R500638</b>		Roller - Grooved Repairable Steel	0	
<i>Tech Note: Constructed with a through shaft and greasable tapered bearings for extended life, this roller can be repaired by unscrewing the ends and replacing the series of washers and spacers. Body Length: 30-1/2" &amp; Shaft Length: 35":</i>					
3	<b>R500625</b>		Roller - Smooth Regreasable Steel	0	
<i>Tech Note: Constructed with a through shaft, this heavy duty roller uses greasable tapered bearings for extended life. Body Length: 26-7/8" &amp; Shaft Length: 31-3/4":</i>					
3	<b>R500627</b>		Roller - Smooth Regreasable Steel	0	
<i>Tech Note: Constructed with a through shaft, this heavy duty roller uses greasable tapered bearings for extended life. Body Length: 28-3/16" &amp; Shaft Length: 35":</i>					
4	<b>R500645</b>		Roller - Smooth Tubular Steel	0	

All original equipment manufacturers names and part numbers are used for identification purposes only, and we are in no way implying that our products are original equipment parts. Prices subject to change without notice.



# Replaces Ransomes 213, 350 & 5/7 Fairway Parts

Cutting Unit  
Rollers



Item No	R&R Part No.	OEM Part No.	Description	Qty Req	Order Quantity
---------	--------------	--------------	-------------	---------	----------------

*Tech Note: Constructed with a through shaft, this heavy duty roller uses greasable tapered bearings for extended life. Body Length: 28" & Shaft Length: 31-3/4":*

4	<b>R500650</b>		Roller - Smooth Tubular Steel	0
---	----------------	--	-------------------------------	---

*Tech Note: Constructed with a through shaft, this heavy duty roller uses greasable tapered bearings for extended life. Body Length: 30-1/2" & Shaft Length: 35":*

5	<b>R1707500</b>		Roller - Grooved UHMW Polyethelene	0
---	-----------------	--	------------------------------------	---

*Tech Note: Machined from solid UHMW, this low maintenance roller rotates around a 1" solid stainless steel shaft and requires no bearings or grease. Patented groove design and smooth UHMW material prevents build-up of debris. Body Length: 28" & Shaft Length: 31-3/4":*

6	<b>R170515</b>	LMSE028	Roller - Grooved Repairable Steel	0
---	----------------	---------	-----------------------------------	---

*Tech Note: Constructed with a through shaft and greasable tapered bearings for extended life, this roller can be repaired by unscrewing the ends and replacing the series of washers and spacers. Body Length: 30-1/2" & Shaft Length: 33-1/4":*

7	<b>R170510</b>	LMSE027	Roller - Smooth Tubular Steel	0
---	----------------	---------	-------------------------------	---

*Tech Note: Constructed with a through shaft, this heavy duty roller uses greasable tapered bearings for extended life. Body Length: 30-1/2" & Shaft Length: 33-1/4":*

## Overhaul Kits

10	<b>R100135</b>		Overhaul Kit - Roller	0
----	----------------	--	-----------------------	---

*Tech Note: Includes 2 ea.: R302-5 Grease Fittings, R253-122 Seals, R253-117 Seals, R150674 Wear Sleeves, R254-78 Bearings, R254-79 Bearing Cups, & R3296-15 Locknuts:*

11	<b>R100195</b>		Overhaul Kit - Roller	0
----	----------------	--	-----------------------	---

*Tech Note: Includes 2 ea.: RA122293 Screws, RA170040 Snap Rings, RA203603 Bearings, RA220250 Seals, RA221114 O-rings, & RA299301 Grease Fittings:*

12	<b>R101399</b>		Overhaul Kit - UHMW 2 Pc Roller	1
----	----------------	--	---------------------------------	---

*Tech Note: Fits all R&R 2-1/2" - 3-1/2" Dia. Black UHMW Plastic Rollers that do not use ball bearings.. Includes 2 ea.: R1503230 Star Washers, R1503470 Seals, R150333 Thrust Washers, R3296-15 Locknuts, R1503471 Bronze Thrust Washers:*

All original equipment manufacturers names and part numbers are used for identification purposes only, and we are in no way implying that our products are original equipment parts. Prices subject to change without notice.



# Replaces Ransomes 213, 350 & 5/7 Fairway Parts

Cutting Unit  
Rollers



Item No	R&R Part No.	OEM Part No.	Description	Qty Req	Order Quantity
---------	--------------	--------------	-------------	---------	----------------

13	<b>R700505</b>		Conversion Kit - Roller	0	
----	----------------	--	-------------------------	---	--

*Tech Note: Includes: 2 each: R254-78 Bearing Cones, R254-79 Bearing Cups, R328062 Seals, R412063 Square Head Set Screws, R700501 Roller Ends & R700502 Grease Retainers.:*

### Other Parts Available

16	<b>R328059</b>		Shaft - Grooved Roller	1	
----	----------------	--	------------------------	---	--

16	<b>R500623</b>		Shaft - 30 Roller 34-1/2	1	
----	----------------	--	--------------------------	---	--

*Tech Note: Use with R500627:*

16	<b>R500634</b>		Shaft - Fits 28 Roller 34	1	
----	----------------	--	---------------------------	---	--

16	<b>R500637</b>		Shaft - 35 Fits 2 3/8 Roller	1	
----	----------------	--	------------------------------	---	--

16	<b>R500621</b>		Shaft - 30 Grooved Roller	1	
----	----------------	--	---------------------------	---	--

*Tech Note: No hole in the end of shaft:*

16	<b>R170511</b>		Shaft	1	
----	----------------	--	-------	---	--

*Tech Note: 33-1/4" Long:*

17	<b>R5-4038</b>		Sleeve - Wear Reel Shaft	2	
----	----------------	--	--------------------------	---	--

18	<b>R253-117</b>		Seal - Outer Triple Lip	2	
----	-----------------	--	-------------------------	---	--

19	<b>R253-122</b>		Seal	2	
----	-----------------	--	------	---	--

20	<b>R254-78</b>		Tapered Bearing Cone	2	
----	----------------	--	----------------------	---	--

21	<b>R254-79</b>		Cup - Bearing	2	
----	----------------	--	---------------	---	--

*Tech Note: Use R254-79M installation mandrel to properly install race.:*

22	<b>R302-5</b>		Fitting - Grease	2	
----	---------------	--	------------------	---	--

24	<b>R3296-15</b>		Locknut - 3/4-16 Nylon Jam	1	
----	-----------------	--	----------------------------	---	--

28	<b>R170714</b>		Fitting - Pressure Relief	0	
----	----------------	--	---------------------------	---	--

All original equipment manufacturers names and part numbers are used for identification purposes only, and we are in no way implying that our products are original equipment parts. Prices subject to change without notice.



# Replaces Ransomes 213, 350 & 5/7 Fairway Parts

*Cutting Unit  
Rollers*



Item No	R&R Part No.	OEM Part No.	Description	Qty Req	Order Quantity
29	RA122293	A122293	Screw - Set 6mm x 1.0 x 5/16	2	
31	R700502		Retainer - Grease	2	
32	R500534	2208006	Bearing - with Cup	2	
33	R328062		Seal - Roller	2	
34	R700501		Roller End - Regreasable	2	
35	R412063		Screw - Sq. HD. Set	2	
37	R150670		Roller End - 2-3/4 Threaded	2	
37	R500631		Roller End - 2-3/8 Grooved	2	
38	R150671		Spacer - 2 3/4 / 3 Rollers 13/16 L	0	
38	R150676		Spacer - 2-3/4 Dia x 1-1/4 L	0	
38	R150651		Spacer - 2-3/8 Roller	39	
39	R150672		Washer - 2-3/4 Roller	0	
39	R150653		Washer - 2-3/8 Roller	0	
41	R150691		Screw - Set Nyloc 3/8-16 x 3/8	4	
44	RA170040	A170040	Ring - Snap	2	
47	R500648		Roller End - 2-3/8 Solid	1	
49	RA220250	A220250	Seal - Oil	2	
52	RA221114	A221114	O-Ring	2	
54	RA221910	A221910	O-Ring	4	
55	RA130012	A130012	Nut - 12mm x 1.75 Jam	2	
56	RA151012	A151012	Washer - Flat 12 mm	4	
58	R100103		Roller End - Grooved	2	

All original equipment manufacturers names and part numbers are used for identification purposes only, and we are in no way implying that our products are original equipment parts. Prices subject to change without notice.



# Replaces Ransomes 213, 350 & 5/7

## Fairway Parts

*Cutting Unit  
Rollers*



Item No	R&R Part No.	OEM Part No.	Description	Qty Req	Order Quantity
59	<b>RA203603</b>	A203603	Bearing	2	
61	<b>RA299301</b>	A299301	Fitting - Grease	2	
62	<b>R170308</b>		Roller End - Solid 3	2	
63	<b>R150504</b>		Washer	2	
64	<b>R150333</b>		Washer - Flat Keyed Outer SS	2	
65	<b>RMBB6766</b>	MBB6766	Shaft - Roller	1	
66	<b>R1503471</b>		Washer - Thrust SAE660 Bronze	2	
67	<b>R1503230</b>		Washer - Thrust Outer Keyed	2	
68	<b>R1503470</b>		Seal - Inner Wiper	2	
69	<b>RMBB6762</b>	MBB6762	Roller End - Cap	2	

All original equipment manufacturers names and part numbers are used for identification purposes only, and we are in no way implying that our products are original equipment parts. Prices subject to change without notice.