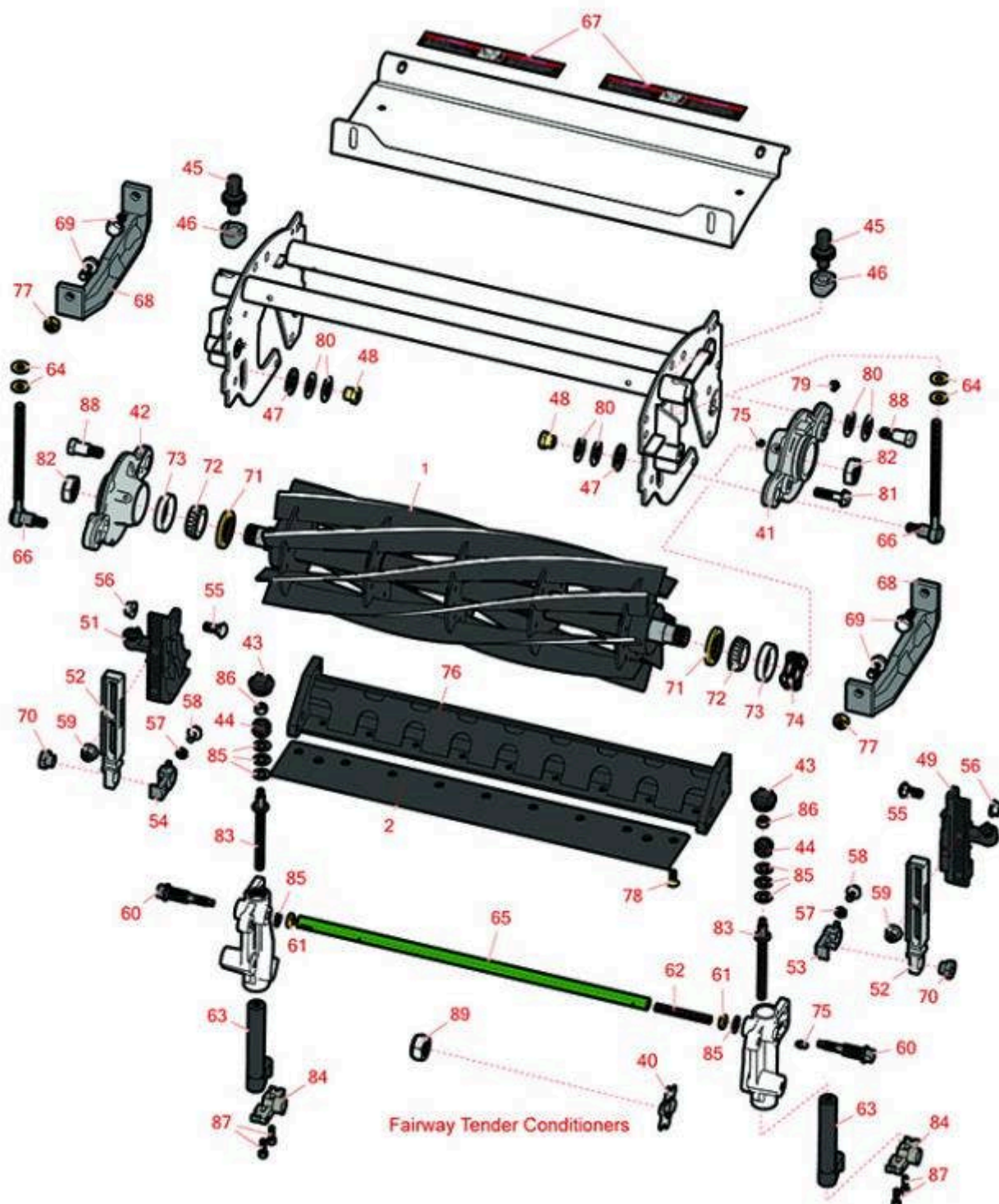




Cutting Unit - Serial 020001 & Up
Reel & Bedknife



All original equipment manufacturers names and part numbers are used for identification purposes only, and we are in no way implying that our products are original equipment parts. Prices subject to change without notice.



Replaces John Deere 8700 Reel Mower Parts

Cutting Unit - Serial 020001 & Up
Reel & Bedknife



Item No	R&R Part No.	OEM Part No.	Description	Qty Req	Order Quantity
---------	--------------	--------------	-------------	---------	----------------

R&R Reels, Lifetime Guaranteed

1	RTCA19353	TCA19353	Reel - 8 Blade - Internal Splines	1
---	------------------	----------	-----------------------------------	---

Detail Description: R&R Reel blades are expertly crafted from premium high carbon-boron alloy steel, heat-treated to perfectly complement both R&R and OEM bedknives. Each reel undergoes precision cylindrical grinding on bearing surfaces, followed by relief grinding for optimal performance. Advanced computer balancing ensures extended reel and bearing life. Backed by our lifetime guarantee against defects in materials and craftsmanship under normal use, R&R Reels deliver unmatched durability and cutting precision you can trust.:

1	RTCA19354	TCA19354	Reel - 10 Blade - Internal Splines	1
---	------------------	----------	------------------------------------	---

Detail Description: R&R Reel blades are expertly crafted from premium high carbon-boron alloy steel, heat-treated to perfectly complement both R&R and OEM bedknives. Each reel undergoes precision cylindrical grinding on bearing surfaces, followed by relief grinding for optimal performance. Advanced computer balancing ensures extended reel and bearing life. Backed by our lifetime guarantee against defects in materials and craftsmanship under normal use, R&R Reels deliver unmatched durability and cutting precision you can trust.:

1	RAMT2895	AMT2895	Reel - 5 Blade	1
---	-----------------	---------	----------------	---

Detail Description: R&R Reel blades are expertly crafted from premium high carbon-boron alloy steel, heat-treated to perfectly complement both R&R and OEM bedknives. Each reel undergoes precision cylindrical grinding on bearing surfaces, followed by relief grinding for optimal performance. Advanced computer balancing ensures extended reel and bearing life. Backed by our lifetime guarantee against defects in materials and craftsmanship under normal use, R&R Reels deliver unmatched durability and cutting precision you can trust.:

R&R Bedknives, Lifetime Guaranteed

2	RET17751	ET17751	Bedknife - Standard 12mm	1
---	-----------------	---------	--------------------------	---

Detail Description: R&R Bedknives are manufactured from high carbon-boron alloy steel and then hardened to RC46-49 to match the temper of our reel blades and original equipment reels. Bedknives are surface ground on the top and front edge and straightened three times before being packaged with oil for rust prevention. All R&R Bedknives now have an increased front edge grind for added life. All R&R Bedknives are guaranteed against defects in material and workmanship under normal use for the life of the part.:

2	RMT1928	MT1928	Bedknife - 9.5mm (3/8)	1
---	----------------	--------	------------------------	---

All original equipment manufacturers names and part numbers are used for identification purposes only, and we are in no way implying that our products are original equipment parts. Prices subject to change without notice.



Replaces John Deere 8700 Reel Mower Parts

Cutting Unit - Serial 020001 & Up
Reel & Bedknife



Item No	R&R Part No.	OEM Part No.	Description	Qty Req	Order Quantity
---------	--------------	--------------	-------------	---------	----------------

Detail Description: R&R Bedknives are manufactured from high carbon-boron alloy steel and then hardened to RC46-49 to match the temper of our reel blades and original equipment reels. Bedknives are surface ground on the top and front edge and straightened three times before being packaged with oil for rust prevention. All R&R Bedknives now have an increased front edge grind for added life. All R&R Bedknives are guaranteed against defects in material and workmanship under normal use for the life of the part.:

2	RMT3983	MT3983	Bedknife - 6.3 mm (1/4)	1
---	----------------	--------	-------------------------	---

Detail Description: R&R Bedknives are manufactured from high carbon-boron alloy steel and then hardened to RC46-49 to match the temper of our reel blades and original equipment reels. Bedknives are surface ground on the top and front edge and straightened three times before being packaged with oil for rust prevention. All R&R Bedknives now have an increased front edge grind for added life. All R&R Bedknives are guaranteed against defects in material and workmanship under normal use for the life of the part.:

2	RTC32581	TCU32581	Bedknife - Razor Tool Steel - 1/4 in HOC - Extended	1
---	-----------------	----------	---	---

Other Parts Available

40	RMT2624	MT2624	Knife - Greens Conditioner	38
41	RUC13937	UC13937	Housing - w/o Bearing - LH	1
42	RUC13941	UC13941	Housing - w/o Bearing - RH	1
43	RUC16102	TCU24949, UC16102	Cap	2
44	RTC40491	TCU24683, TCU40491	Worm Gear	2
45	RUC16137	TCU24955, UC16137	Adjuster	2
46	RTC25394	TCU25394, TCU27453	Base	2
47	RTC25260	TCU25260	Washer	2
48	RET16572	ET16572	Nut - Hex	2
49	RUC16138	UC16138	Bracket - Front LH	1

All original equipment manufacturers names and part numbers are used for identification purposes only, and we are in no way implying that our products are original equipment parts. Prices subject to change without notice.



Replaces John Deere 8700 Reel Mower Parts

Cutting Unit - Serial 020001 & Up
Reel & Bedknife



Item No	R&R Part No.	OEM Part No.	Description	Qty Req	Order Quantity
51	RUC16139	UC16139	Bracket - Front RH	1	
52	RUC22790	UC22790	Bracket - Front Roller	2	
53	RUC18211	TCU24461, UC18211	Bracket - LH	1	
54	RUC16109	TCU24461, UC16109	Bracket - RH	1	
55	R03M7191	03M7191	Bolt - Carriage M10 x 25	4	
56	RH135891	H135891	Locknut - 10mm x 1.5 Flanged 10.9	4	
<i>Detail Description: High Strength:</i>					
57	R14M7151	14M7151	Nut - Jam Roller Adj	2	
58	R33114-016	19M7162	Bolt - Hx HD 8mm x 1.25 x 15	2	
59	R14M7465	14M7465	Lock Nut - M10-1.50 Fl	4	
60	RTC26458	TCU26458	Worm Gear	2	
61	R14M7152	14M7152	Nut - 10mm x 1.5 Jam	2	
62	RTC25398	TCU25398	Compression Spring	1	
63	RAUC13597	AUC13597	Adjuster	2	
64	R24H1682	24H1682	Washer - 13/32 x 7/8 x 1/8	4	
65	RTC26729	TCU26729	Tube	1	
66	RTC25317	TCU25317	Adjuster	2	
67	RMT6517	MT6517	Label - Warning	2	
68	RMT2527	MT2527	Shoe - Skid	2	
69	R19M7785	19M7785	Bolt - Hex Washer M10-1.5 x 25	4	

All original equipment manufacturers names and part numbers are used for identification purposes only, and we are in no way implying that our products are original equipment parts. Prices subject to change without notice.



Replaces John Deere 8700 Reel Mower Parts

Cutting Unit - Serial 020001 & Up
Reel & Bedknife



Item No	R&R Part No.	OEM Part No.	Description	Qty Req	Order Quantity
70	RTCU28635	TCU24555, TCU28635	Eccentric	2	
71	RTCU25266	TCU25266	Seal	2	
72	R254-94	JD8933, TCU37582	Tapered Bearing Cone	2	
73	R254-72	JD8253	Cup - Bearing	2	
74	R170610	TCU26530	Spring - Compression	1	
75	R302-5	JD7797, JD7842, JD7844	Fitting - Grease	4	
76	RAMT2973	AMT2973	Backing Bar - Bed Knife	1	
77	R14M7400	14M7400	Locknut - 10mm	4	
78	R19M7573	19M7573	Screw - Bedknife M8-1.25 x 20	9	
79	R170714	E14814	Fitting - Pressure Relief	2	
80	RET16678	ET16678	Washer - Spring	8	
81	R19M7804	19M7804	Bolt - Flanged Hex M10-1.5 x 40	2	
82	RTCU26215	TCU26215	Nut - Reel	2	
83	RTCU26123	TCU26123	Adjuster	2	
84	RTCU28987	TCU25228, TCU28987	Half Clamp - Roller Bkt	2	
85	RET16679	ET16679	Washer - Spring	6	
86	RM148268	M148268	Lock Nut	2	
87	R19M8627	19M7603, 19M8627	Screw - M6 x 20	4	

All original equipment manufacturers names and part numbers are used for identification purposes only, and we are in no way implying that our products are original equipment parts. Prices subject to change without notice.



Replaces John Deere 8700 Reel Mower Parts

*Cutting Unit - Serial 020001 & Up
Reel & Bedknife*



Item No	R&R Part No.	OEM Part No.	Description	Qty Req	Order Quantity
88	RMT6338	MT6338	Bolt - Shoulder	2	
89	RN198341	N198341	Nut - Nyloc 7/8-14	1	
90	RTCA18844	AMT1303, TCA18844	Yoke	3	
91	R19M7835	19M7835	Screw - M10 x 35	10	

All original equipment manufacturers names and part numbers are used for identification purposes only, and we are in no way implying that our products are original equipment parts. Prices subject to change without notice.