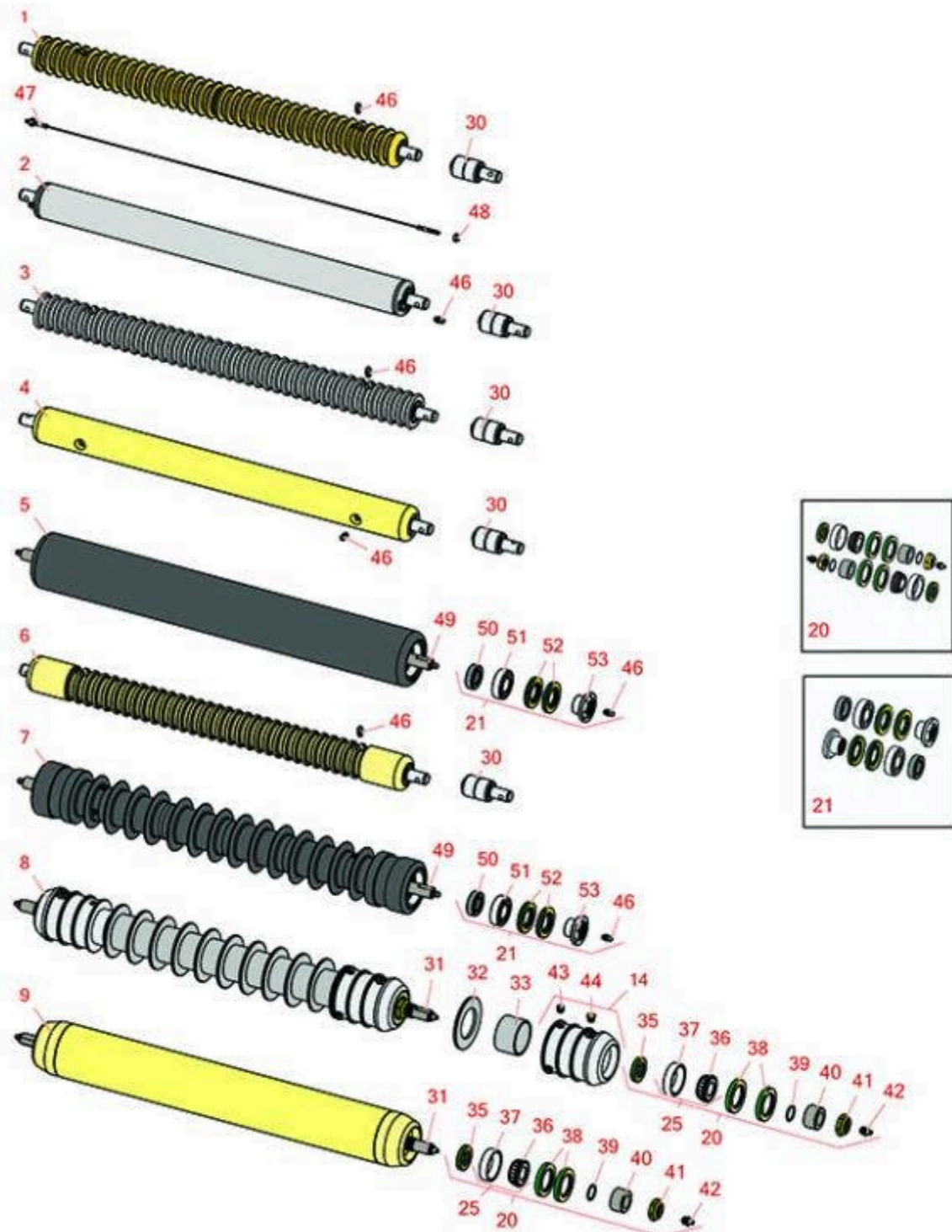




# Replaces John Deere 7500 Reel Mower

## Parts

Cutting Unit - Serial 020001 & Up  
Rollers



All original equipment manufacturers names and part numbers are used for identification purposes only, and we are in no way implying that our products are original equipment parts. Prices subject to change without notice.



# Replaces John Deere 7500 Reel Mower Parts

Cutting Unit - Serial 020001 & Up  
Rollers



Item No	R&R Part No.	OEM Part No.	Description	Qty Req	Order Quantity
---------	--------------	--------------	-------------	---------	----------------

## R&R Rollers

1	<b>RAET10954</b>	AET10954, AMT2875, AMT2879	Roller - Grooved Machined Solid Steel	0	
<i>Detail Description: Machined from solid steel, this heavy weight roller uses greasable "water-pump" style bearings.:</i>					
2	<b>RAET10111</b>	AET10111, AMT2876	Roller - Smooth Tubular Steel	0	
<i>Detail Description: This tubular steel roller uses greasable "water-pump" style bearings.:</i>					
3	<b>RAMT1061</b>	AET10557, AMT1061, AMT2877	Roller - Grooved Machined Solid Steel	0	
<i>Detail Description: Machined from solid steel, this heavy weight roller uses greasable "water-pump" style bearings.:</i>					
4	<b>RAMT1442</b>	AMT1442, AMT2878	Roller - Smooth Solid Steel	0	
<i>Detail Description: Machined from solid steel, this heavy weight roller uses greasable "water-pump" style bearings.:</i>					
5	<b>R1203825</b>		Roller - Fusion Smooth UHMW Polyethylene	0	
<i>Detail Description: Fusion Rollers combine the best features of our UHMW plastic rollers with a heavy-duty internal bearing system. Machined from solid UHMW plastic that prevents build-up of debris. This roller turns on precision stainless ball bearings and double seals for added life.:</i>					
6	<b>RAMT1443</b>	AMT1443, AMT2879	Roller - Grooved Machined Solid Steel	0	
<i>Detail Description: Machined from solid steel, this heavy weight roller uses greasable "water-pump" style bearings. Extended length body.:</i>					
7	<b>R1203820</b>	1203752	Roller - Fusion Grooved UHMW Polyethylene	0	

All original equipment manufacturers names and part numbers are used for identification purposes only, and we are in no way implying that our products are original equipment parts. Prices subject to change without notice.



# Replaces John Deere 7500 Reel Mower Parts

Cutting Unit - Serial 020001 & Up  
Rollers



Item No	R&R Part No.	OEM Part No.	Description	Qty Req	Order Quantity
---------	--------------	--------------	-------------	---------	----------------

*Detail Description: Fusion Rollers combine the best features of our UHMW plastic rollers with a heavy-duty internal bearing system. Machined from solid UHMW plastic that prevents build-up of debris. This roller has a patented deep groove design and turns on precision stainless ball bearings and double seals for added life:*

8	<b>R500512</b>	AMT2966, BM25317	Roller - Grooved Repairable Steel	0	
---	----------------	---------------------	-----------------------------------	---	--

*Detail Description: Constructed with a through shaft and greasable ball bearings. This roller can be repaired by unscrewing the ends and replacing the series of washers and spacers.:*

9	<b>RAET11263</b>	AET11263, AMT2967	Roller - Smooth Tubular Steel	0	
---	------------------	----------------------	-------------------------------	---	--

*Detail Description: Constructed with a through shaft, this heavy duty roller uses greasable tapered bearings for extended life.:*

## Overhaul Kits

20	<b>RAET10632</b>	AET10632	Overhaul Kit - Roller	0	
----	------------------	----------	-----------------------	---	--

*Detail Description: Includes 4 ea: RET15755 Seal; 2 ea: R237-54 O-Ring, R253-122 Seal, R254-78 Bearing, R254-79 Cup, R3296-15 Locknut, R471219 Grease Zerk, RET15726 Sleeve, RET15756 Seal:*

21	<b>R114-5430</b>		Overhaul Kit - Roller	0	
----	------------------	--	-----------------------	---	--

*Detail Description: Includes 4 ea.: R112-7494 Seals; 2 ea.: R302-5 Grease Zerks, R114-3717 Seals, R112-5290 Bearings & R114-3745 Locknuts:*

## Other Parts Available

30	<b>RAA35741</b>	AA35741, AET10129, TCA22836	Bearing	2	
----	-----------------	-----------------------------------	---------	---	--

*Detail Description: 1/4" Side Hole:*

31	<b>RET17515</b>	ET17515	Shaft - Roller	1	
----	-----------------	---------	----------------	---	--

32	<b>R150673</b>		Washer - 3 Repairable Roller	11	
----	----------------	--	------------------------------	----	--

33	<b>R150676</b>		Spacer - 2-3/4 Dia x 1-1/4 L	10	
----	----------------	--	------------------------------	----	--

All original equipment manufacturers names and part numbers are used for identification purposes only, and we are in no way implying that our products are original equipment parts. Prices subject to change without notice.



# Replaces John Deere 7500 Reel Mower Parts

Cutting Unit - Serial 020001 & Up  
Rollers



Item No	R&R Part No.	OEM Part No.	Description	Qty Req	Order Quantity
34	R500511		Roller End - Threaded 3	2	
35	RET15756	ET15756, MT1739, MT739	Seal	2	
36	R254-78	JD8188	Tapered Bearing Cone	2	
37	R254-79	JD8226	Cup - Bearing	2	
<i>Detail Description: Use R254-79M installation mandrel to properly install race.:</i>					
38	RET15755	ET15755	Seal - Oil	4	
39	R237-54	U46731, U6731	O-Ring - Small	2	
40	RET15726	ET15726, RET15726	Sleeve - Wear Hardened	2	
41	R3296-15	N101345	Locknut - 3/4-16 Nylon Jam	2	
42	R471219	471219, 471231, JD7759, JD7798	Zerk - Grease	2	
43	R150691		Screw - Set Nyloc 3/8-16 x 3/8	4	
44	R170714	E14814	Fitting - Pressure Relief	2	
45	R500534		Bearing - with Cup	2	
<i>Detail Description: Kit includes: 1 ea R254-78- Bearing Cone &amp; R254-79 Bearing Cone:</i>					
46	R302-5	JD7797, JD7842, JD7844	Fitting - Grease	2	
47	RTCA19566	TCA19566	Cable - Smooth Roller Scraper	1	
48	RU45916	14M7298, U45916	Locknut - 10-24 ESNA	2	

All original equipment manufacturers names and part numbers are used for identification purposes only, and we are in no way implying that our products are original equipment parts. Prices subject to change without notice.



# Replaces John Deere 7500 Reel Mower Parts

*Cutting Unit - Serial 020001 & Up  
Rollers*



Item No	R&R Part No.	OEM Part No.	Description	Qty Req	Order Quantity
49	R1203821		Shaft - Fusion Roller	1	
50	R3010210		Seal - Roller	2	
51	R112-5290		Bearing - Stainless	1	
52	R112-7494		Seal	4	
53	R114-3745		Locknut - Bearing - Stainless	2	

All original equipment manufacturers names and part numbers are used for identification purposes only, and we are in no way implying that our products are original equipment parts. Prices subject to change without notice.