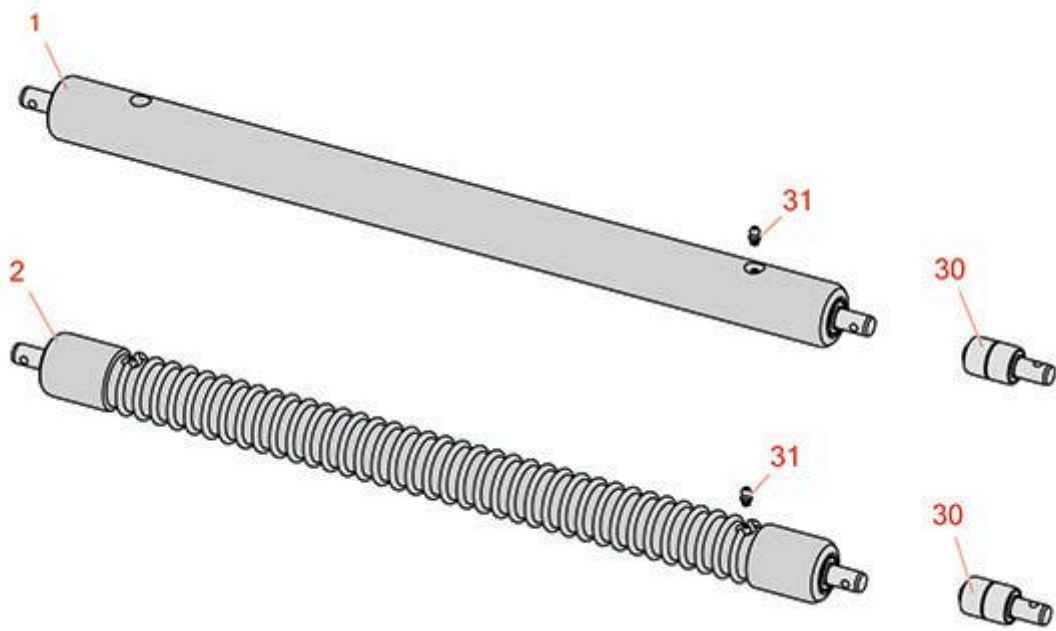




# Replaces John Deere 260C Walk-Behind Greens Mower Parts

*Cutting Unit  
Rollers*



All original equipment manufacturers names and part numbers are used for identification purposes only, and we are in no way implying that our products are original equipment parts. Prices subject to change without notice.



# Replaces John Deere 260C Walk-Behind Greens Mower Parts

Cutting Unit  
Rollers



Item No	R&R Part No.	OEM Part No.	Description	Qty Req	Order Quantity
---------	--------------	--------------	-------------	---------	----------------

## R&R Rollers to Fit 260C

1	RAMT2787	AMT2787, AMT2982	Roller - Smooth Solid Steel	0	
---	----------	---------------------	-----------------------------	---	--

*Detail Description: Machined from solid steel, this heavy weight roller uses greasable "water-pump" style bearings.:*

2	RAMT2785	AMT2785	Roller - Grooved Machined Solid Steel	0	
---	----------	---------	---------------------------------------	---	--

*Detail Description: Machined from solid steel, this heavy weight roller uses greasable "water-pump" style bearings.:*

## Other Parts Available

30	RAA35741	AA35741, AET10129, TCA22836	Bearing	2	
----	----------	-----------------------------------	---------	---	--

*Detail Description: 1/4" Side Hole:*

31	R302-5	JD7797, JD7842, JD7844	Fitting - Grease	2	
----	--------	------------------------------	------------------	---	--

All original equipment manufacturers names and part numbers are used for identification purposes only, and we are in no way implying that our products are original equipment parts. Prices subject to change without notice.