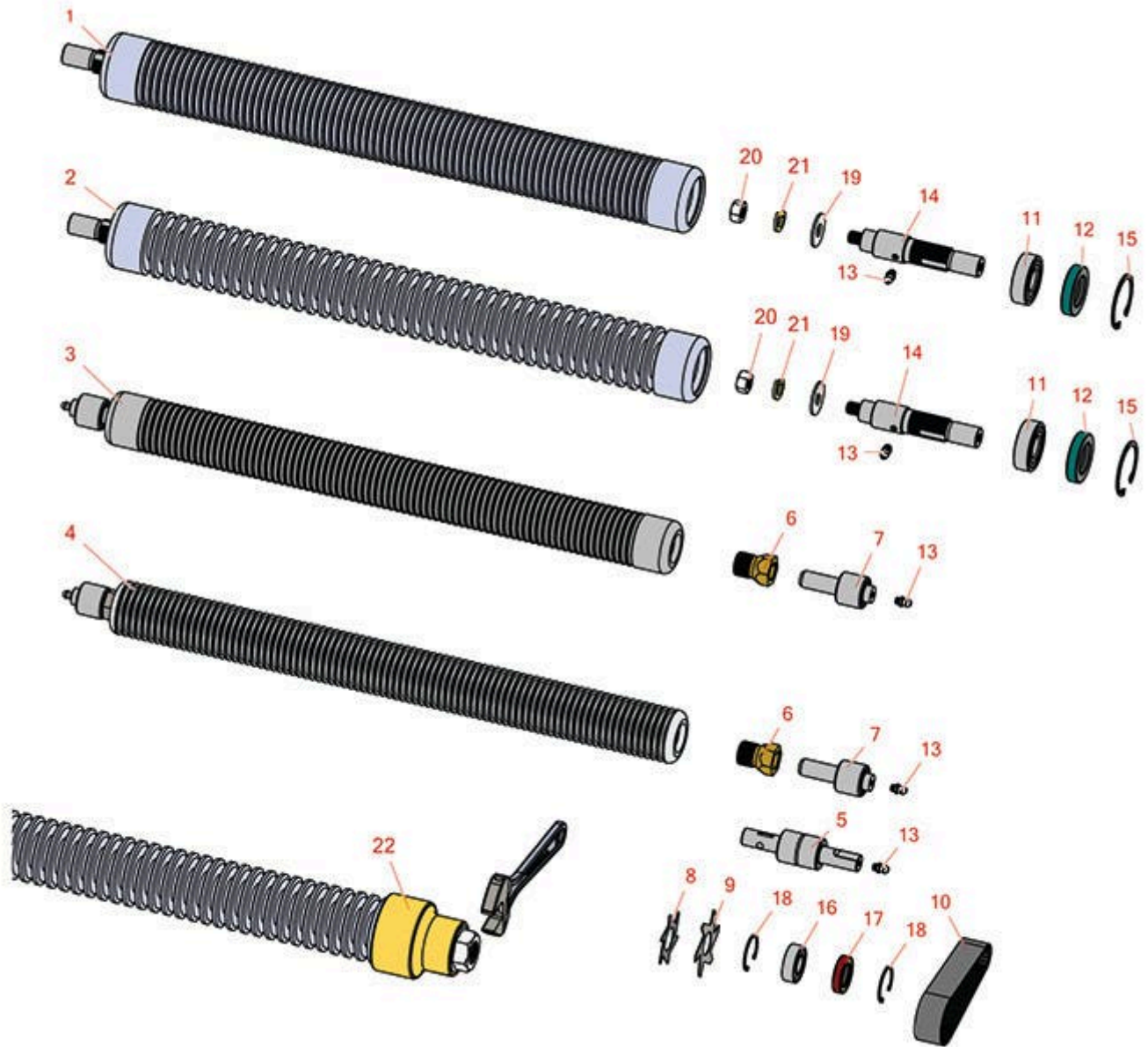




# Replaces Jacobsen PGM 22 Parts

Cutting Unit  
Groomer Roller



All original equipment manufacturers names and part numbers are used for identification purposes only, and we are in no way implying that our products are original equipment parts. Prices subject to change without notice.



# Replaces Jacobsen PGM 22 Parts

Cutting Unit  
Groomer Roller



Item R&R  
No Part No.

OEM  
Part No.

Description

Qty  
Req

Order  
Quantity

## Groomer Roller Parts

|  |                |        |   |    |
|--|----------------|--------|---|----|
| 1  | <b>R390899</b> | 390899 | Roller Tube - Grooved 2.5 x 22 - 1/4 in Spacing | 1  |
| <i>Tech Note: Note: W/ 1/4 Spacing:</i>                            |                |        |   |    |
| 2  | <b>R390900</b> | 390900 | Roller - Grooved 2-1/2 x 22                     | 1  |
| <i>Tech Note: Note: w/ 1/2 Spacing:</i>                            |                |        |   |    |
| 3  | <b>R131927</b> | 131927 | Roller - Grooved Machined Aluminum              | 1  |
| <i>Tech Note: Includes Bearing &amp; Collar:</i>                   |                |        |   |    |
| 3  | <b>R131959</b> | 131959 | Groomer Roller - Grooved Machined Aluminum      | 1  |
| <i>Tech Note: 2" DIA. 19" Long. Includes Bearing &amp; Collar:</i> |                |        |   |    |
| 4  | <b>R338485</b> | 338485 | Roller Tube Only - Grooved Machined Aluminum    | 1  |
| 4  | <b>R338519</b> | 338519 | Groomer Roller - Grooved Machined Aluminum      | 1  |
| 5  | <b>R554571</b> | 554571 | Bearing   | 2  |
| 6  | <b>R364541</b> | 364541 | Collar - Locking                                | 2  |
| 7  | <b>R554570</b> | 554570 | Bearing - w/Zerk Fits Groomer                   | 2  |
| 8  | <b>R363808</b> | 363808 | Blade - V-Cut 2 Dia                             | 85 |
| 9  | <b>R365230</b> | 365230 | Verti-Cut Blade - 2-1/2 Dia.                    | 85 |
| 10   | <b>R363806</b> | 363806 | Belt - Fits Turf Groomer                        | 1  |
| 10   | <b>R365235</b> | 365235 | Belt - Timing Fits 2-1/2 Groomers               | 1  |
| 11   | <b>R365330</b> | 365330 | Bearing   | 2  |
| 12   | <b>R338773</b> | 338773 | Seal  | 2  |

All original equipment manufacturers names and part numbers are used for identification purposes only, and we are in no way implying that our products are original equipment parts. Prices subject to change without notice.



# Replaces Jacobsen PGM 22 Parts

Cutting Unit

Groomer Roller



| Item No | R&R Part No.   | OEM Part No.                           | Description                          | Qty Req | Order Quantity |
|---------|----------------|--|--------------------------------------|---------|----------------|
| 13      | <b>R302-5</b>  | 302-5,<br>471214,<br>471223,<br>471226 | Fitting - Grease                     | 2       |                |
| 14      | <b>R338772</b> | 338772                                 | Shaft - Roller - RH                  | 2       |                |
| 15      | <b>R458113</b> | 458113                                 | Ring - Snap Fits Groomer             | 2       |                |
| 16      | <b>R365229</b> | 365229                                 | Bearing                              | 2       |                |
| 17      | <b>R336962</b> | 336962                                 | Seal                                 | 2       |                |
| 18      | <b>R458461</b> | 458461                                 | Snap Ring                            | 4       |                |
| 19      | <b>R453013</b> | 452008,<br>453013                      | Washer - Flat 7/16                   | 2       |                |
| 20      | <b>R443816</b> | 443816                                 | Nut - 7/16-20 Hex Jam                | 2       |                |
| 21      | <b>R446146</b> | 446146,<br>446148                      | Lock Washer - 7/16                   | 2       |                |
| 22      | <b>R262</b>    |  | Bearing Puller - Fits Groomer Roller | 1       |                |

*Tech Note: Excellent tool to quickly remove bearings and shafts from R390899 and R390900 groomer rollers. Puller Fits Jacobsen & R&R 2-1/2" Groomer Rollers:*

All original equipment manufacturers names and part numbers are used for identification purposes only, and we are in no way implying that our products are original equipment parts. Prices subject to change without notice.