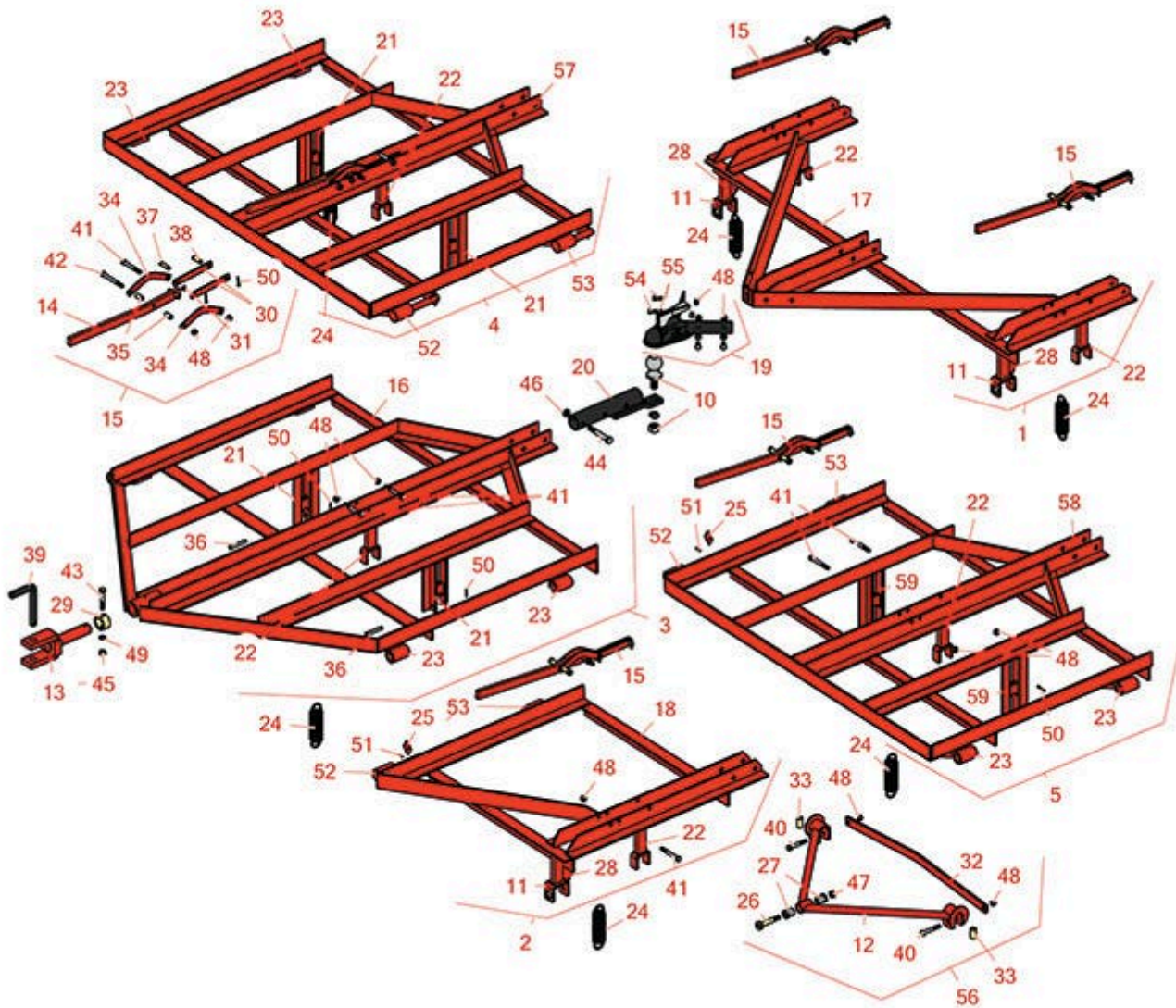




Replaces Jacobsen Fairway Parts

Pull Frame
Frame Parts



All original equipment manufacturers names and part numbers are used for identification purposes only, and we are in no way implying that our products are original equipment parts. Prices subject to change without notice.



Replaces Jacobsen Fairway Parts

Pull Frame
Frame Parts



Item No	R&R Part No.	OEM Part No.	Description	Qty Req	Order Quantity
---------	--------------	--------------	-------------	---------	----------------

Pull Frame Kits

1	R500100	71421	Frame - B Incl. Hardware	0	
<i>Tech Note: Includes: 4 ea: R400312 Bolt, R444744 Locknut; 2 ea: R110537 Latch, R316724 Spring, R325-14 Bolt, R443118 Nut, R500107 Yoke; 1 ea: R110466 Hitch, R129925 Hitch, R153005 Extension & R119061:</i>					
2	R500101L	71441	Frame - E1 Incl Hardware	0	
<i>Tech Note: Includes: 1 ea: R126097 Frame, R110537 Latch, R316724 Spring, R400312 Bolt, R444744 Locknut & R500107 Yoke:</i>					
2	R500102R	71451	Frame - Er Incl Hardware	0	
<i>Tech Note: Includes: 1 ea: R126096 Frame, R110537 Latch, R316724 Spring, R400312 Bolt, R444744 Locknut & R500107 Yoke:</i>					
3	R500103	71460	Frame - D Incl Hardware	0	
<i>Tech Note: Includes: 2 ea: R325390 Pin, R400312 Bolt, R444744 Locknut, R460028 Pin; 1 ea: R116494 Frame, R110537 Latch, R316724 Spring, R110480 Jaw, R318979 Collar, R318979 Pin, R400346 Bolt, R443114 Nut:</i>					
4	R500108		Frame - Special D Assy RH	0	
<i>Tech Note: Includes: 2 ea: R325390 Pin, R400312 Bolt, R444744 Locknut, R460028 Pin; 1 ea: R119059 Frame, R110537 Latch & R316724 Spring:</i>					
5	R500109		Frame - Special D Assy LH	0	
<i>Tech Note: Includes: 2 ea: R325390 Pin, R400312 Bolt, R444744 Locknut, R460028 Pin; 1 ea: R119059 Frame, R110537 Latch & R316724 Spring:</i>					

Pull Frame Parts

10	R110466	110466	Hitch - Ball Assy	0	
11	R110467	110467	Post - Pull For Yoke	0	
12	R110469	110469	Yoke - Pull	0	
13	R110480	110480	Jaw - w/ Stem	0	
14	R110536	110536	Handle	0	

All original equipment manufacturers names and part numbers are used for identification purposes only, and we are in no way implying that our products are original equipment parts. Prices subject to change without notice.



Replaces Jacobsen Fairway Parts

*Pull Frame
Frame Parts*



Item No	R&R Part No.	OEM Part No.	Description	Qty Req	Order Quantity
15	R110537	110537	Latch Assy - Over Center	0	
16	R116494	116494	Frame - D	0	
17	R119061	119061	Frame - B	0	
18	R126096	126096	Frame - E Right	0	
18	R126097	126097	Frame - E Left	0	
19	R129925	129925	Hitch - Includes Hardware	0	
20	R153005	153005	Extension - Hitch	0	
21	R153249	153249	Post - Pull Fits D Frame	0	
22	R153250	153250	Post - Unit Weldment	0	
23	R158734	158734	Hinge - Side	0	
24	R316724	316724	Spring - Unit Tension	0	
25	R317008	317008	Latch - Hinge	0	
26	R318005	318005	Bolt	0	
27	R318006	318006	Bushing - Rubber	0	
28	R318970	318970	Plate - Pull Post Support	0	
29	R318979	318979	Collar	0	
30	R318983	318983	Link - Over Center Latch	0	
31	R318985	318985, 366949	Spacer - Over Center Latch	0	
32	R318993	318993	Brace - Pull Yoke	0	
33	R318994	318994	Spacer - Yoke Jaw	0	
34	R319051	319051	Link - Lift Over Center Latch	0	
35	R319053	319053	Spacer - Over Center Latch	0	

All original equipment manufacturers names and part numbers are used for identification purposes only, and we are in no way implying that our products are original equipment parts. Prices subject to change without notice.



Replaces Jacobsen Fairway Parts

*Pull Frame
Frame Parts*



Item No	R&R Part No.	OEM Part No.	Description	Qty Req	Order Quantity
36	R325390	325390	Pin - Rod End	0	
37	R325539	325539	Pin - Over Center Latch	0	
38	R325540	325540	Pin - Over Center Latch	0	
39	R360341	360341	Pin - Coupling	0	
40	R400310	400310	Bolt - Hex HD 3/8-24 x 2-1/2	0	
41	R400312	400312	Bolt - Hex HD 3/8-24 x 3	0	
42	R400314	400314	Bolt - Hex HD 3/8-24 x 3-1/2	0	
43	R400346	400346	Bolt - Hex HD 7/16-14 x 2-1/2	0	
44	R325-14	325-14	Bolt - Hex HD 1/2-13 x 3-1/2	0	
45	R443114	443114	Nut - 7/16 Hex Yellow Zinc	0	
46	R443118	443118	Nut - 1/2-13 Zinc	0	
47	R444730	444730	Nut - 7/16-20 Hex	0	
48	R444744	444744	Locknut - 3/8-24	0	
49	R446146	446146, 446148	Lock Washer - 7/16	0	
50	R460028	460028	Pin - Cotter 1/8 x 1	0	
51	R461416	461416	Pin - Roll	0	
52	R502757	502757	Hinge - Front	0	
53	R502758	502758	Hinge - Rear	0	
54	R400296	400296	Bolt - Hex HD 3/8-24 x 7/8	0	
55	R3254-6	3254-6, 446140, 446142	Washer - Lock 3/8	0	
56	R500107		Yoke - Pull Assy	0	

All original equipment manufacturers names and part numbers are used for identification purposes only, and we are in no way implying that our products are original equipment parts. Prices subject to change without notice.



Replaces Jacobsen Fairway Parts

*Pull Frame
Frame Parts*



Item No	R&R Part No.	OEM Part No.	Description	Qty Req	Order Quantity
57	R119058	119058	Frame - Special D RH	0	
58	R119059	119059	Frame - Special D LH	0	
59	R153248	153248	Post - Pull Fits Special D	0	

All original equipment manufacturers names and part numbers are used for identification purposes only, and we are in no way implying that our products are original equipment parts. Prices subject to change without notice.