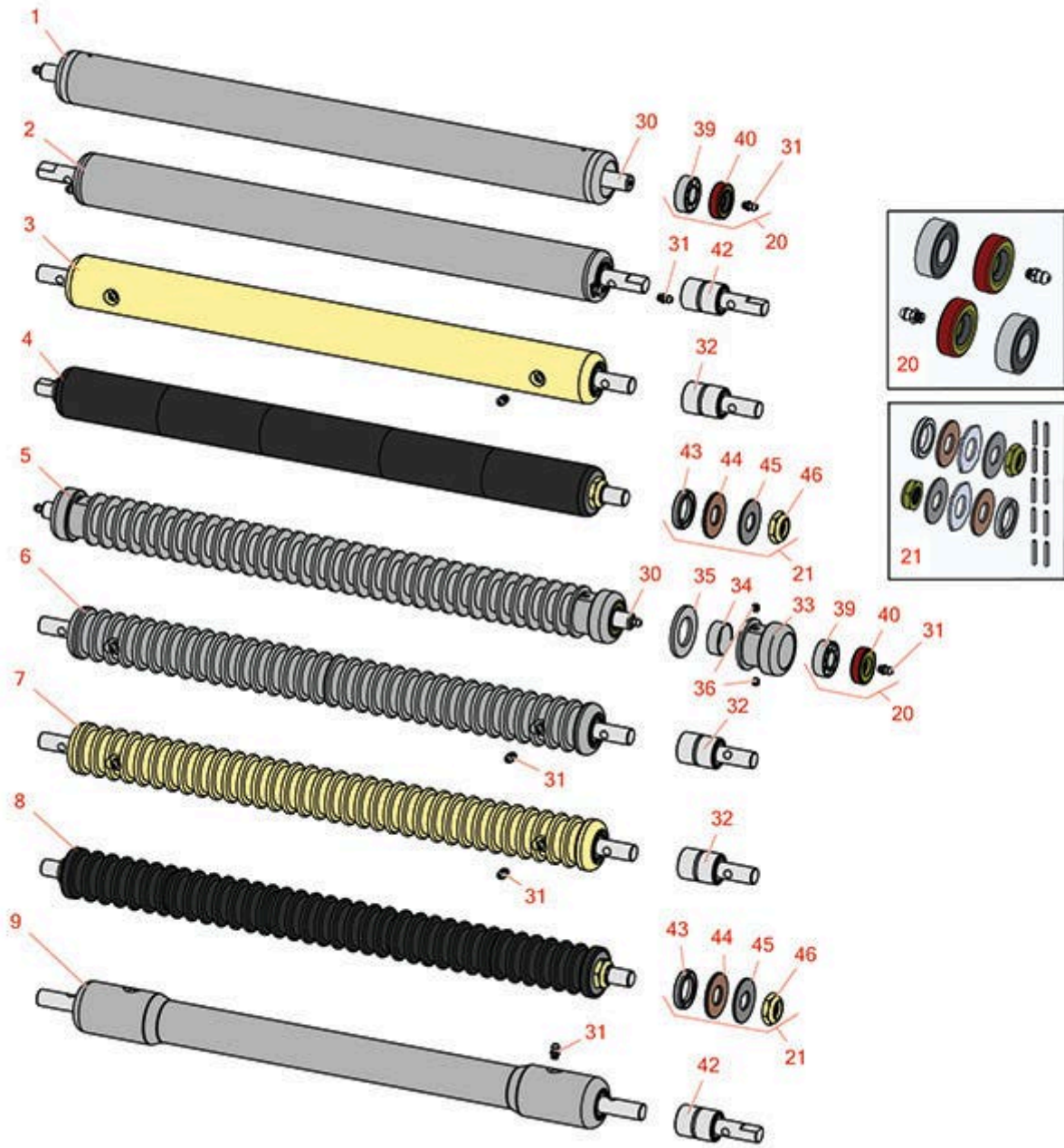




Replaces Jacobsen Eclipse 122F Parts

Floating Head Cutting Unit
Front Rollers



All original equipment manufacturers names and part numbers are used for identification purposes only, and we are in no way implying that our products are original equipment parts. Prices subject to change without notice.



Replaces Jacobsen Eclipse 122F Parts

Floating Head Cutting Unit
Front Rollers



Item No	R&R Part No.	OEM Part No.	Description	Qty Req	Order Quantity
R&R Front Rollers					
1	R158776	158776, 162917	Roller - Smooth Tubular Steel	1	
<i>Tech Note: Constructed with a through shaft and greasable ball bearings.:</i>					
2	R52-3120		Roller - Smooth Tubular Steel	1	
<i>Tech Note: Constructed with "water-pump" style bearings.:</i>					
3	R101126		Roller - Smooth Solid Steel	1	
<i>Tech Note: Machined from solid steel, this heavy weight roller uses greasable "water-pump" style bearings.:</i>					
4	R101336		Roller - Smooth UHMW Polyethylene	1	
<i>Tech Note: Machined from solid UHMW, this low maintenance roller uses a 1" solid stainless steel shaft and requires no grease. UHMW material prevents build-up of debris.:</i>					
5	R68527R		Roller - Grooved Repairable Steel	1	
<i>Tech Note: Constructed with a through shaft and greasable ball bearings, this roller can be repaired by unscrewing the ends and replacing the series of washers and spacers.:</i>					
6	R101123		Roller - Grooved Machined Solid Aluminum	1	
<i>Tech Note: Machined from solid aluminum, this lightweight roller uses greasable "water-pump" style bearings.:</i>					
7	R68577	68577	Roller - Grooved Machined Solid Steel	1	
<i>Tech Note: Machined from solid steel, this heavyweight roller uses greasable "water-pump" style bearings.:</i>					
8	R101330		Roller - Grooved UHMW Polyethylene	1	
<i>Tech Note: Machined from solid UHMW, this low maintenance roller rotates around a 1" solid stainless steel shaft and requires no bearings or grease. Patented groove design and smooth UHMW material prevents build-up of debris.:</i>					

All original equipment manufacturers names and part numbers are used for identification purposes only, and we are in no way implying that our products are original equipment parts. Prices subject to change without notice.



Replaces Jacobsen Eclipse 122F Parts

Floating Head Cutting Unit
Front Rollers



Item No	R&R Part No.	OEM Part No.	Description	Qty Req	Order Quantity
9	R101122		Roller - Swaged Machined Aluminum	1	
<i>Tech Note: Constructed with "water-pump" style bearings, this steel tubular roller contacts the ground only on the outer 2-7/8" of the roller.:</i>					
Overhaul Kits					
20	R100130	100130	Overhaul Kit - Roller	0	
<i>Tech Note: Includes 2 ea.: R302-5 Grease Fittings, R303558 Bearings, & R305115 Seals:</i>					
21	R101395	100139, 101395	Overhaul Kit - UHMW Roller	0	
<i>Tech Note: Fits all R&R 2" Dia. Black UHMW Polyethylene Rollers. Includes 10 ea.: R150322 Roll Pins; 2 ea.: R3296-15 Locknuts, R150347T Teflon Seals, R150333 Thrust Washers, & R150334A Bronze Thrust Washers:</i>					
Other Parts Available					
30	R102030	102030	Shaft - Front Roller	1	
31	R302-5	302-5, 471214, 471223, 471226	Fitting - Grease	2	
32	R101481	101481, 311839	Bearing - Roller	2	
<i>Tech Note: Fits R&R Machined Grooved Roller & Smooth (19 lbs) Roller:</i>					
33	R150650		Roller End - 2 Repairable	2	
34	R150651		Spacer - 2-3/8 Roller	34	
35	R150652	150652, 325262	Washer - 2 Roller	33	
36	R150690	150690, 415509	Screw - Set 1/4-20 x 1/4	4	
39	R303558	303558	Bearing - Roller	2	

All original equipment manufacturers names and part numbers are used for identification purposes only, and we are in no way implying that our products are original equipment parts. Prices subject to change without notice.



Replaces Jacobsen Eclipse 122F Parts

*Floating Head Cutting Unit
Front Rollers*



Item No	R&R Part No.	OEM Part No.	Description	Qty Req	Order Quantity
40	R305115	305115	Seal - Roller	2	
42	R21-8430		Bearing - Roller	2	
43	R150347T		Seal - Nonstick Lip	2	
44	R150334A		Washer - Thrust SAE660 Bronze	2	
45	R150333		Washer - Flat Keyed Outer SS	2	
46	R3296-15	3296-15, 367029, 444742	Locknut - 3/4-16 Nylon Jam	2	

All original equipment manufacturers names and part numbers are used for identification purposes only, and we are in no way implying that our products are original equipment parts. Prices subject to change without notice.