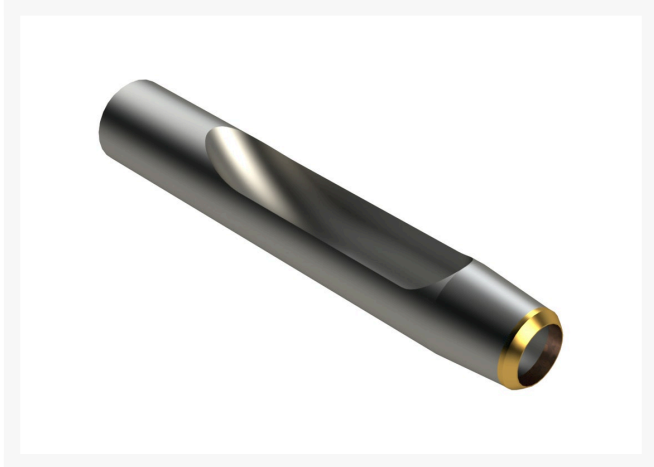




# Alloy Machined Side-Eject Tine with Carbide Tip - .750MT x 4.500L x .645OD

R201696



## Details

Manufactured from special high carbon alloy tubular steel with a precision machined slot in the side wall to allow for more efficient core removal in heavy soils. R&R's unique method of machining maintains the maximum side wall height for strength to avoid bending. These tines are through hardened to RC45-48 to create a much tougher and more wear resistant tine. A carbide tip is then added for even longer life. The advantage of using carbide tipped tines is the ability to maintain your maximum aerating depth consistently over the life of the tines.

## Specifications

Manufacturer	R&R Products
A - Tine Type	Alloy Machined Side-Eject with Carbide Tip
B - Tine Mounting Dia.	.750 in (19mm)
C - Tine Length	4.5 in (114mm)
Carbide Tip	Carbide Tip
D - Tine Tip Outside (Hole) Dia.	.645 in (16.4mm)
E - Tine Tip Inside (Core) Dia.	.500 in (12.7mm)
F - Tine Wall Thickness	.062 in (1.6mm)

## Fits Models

Jacobsen GA-24  
Ryan GA30  
Ryan Greensaire II  
Toro Greens Aerator  
Toro ProCore 1298  
Toro ProCore 440  
Toro ProCore 648  
Toro ProCore 660  
Toro ProCore 864

## Evergreen

C/. Bartomeu Amat, 2, Entlo 1 Terrassa, 08225  
+34 931 130 054

<https://evergreen.rrproducts.com/>



**Alloy Machined Side-Eject Tine with  
Carbide Tip - .750MT x 4.500L x .645OD**  
R201696



---

Toro ProCore 880  
Toro ProCore 648s

**Evergreen**

C/. Bartomeu Amat, 2, Entlo 1 Terrassa, 08225  
+34 931 130 054

<https://evergreen.rrproducts.com/>