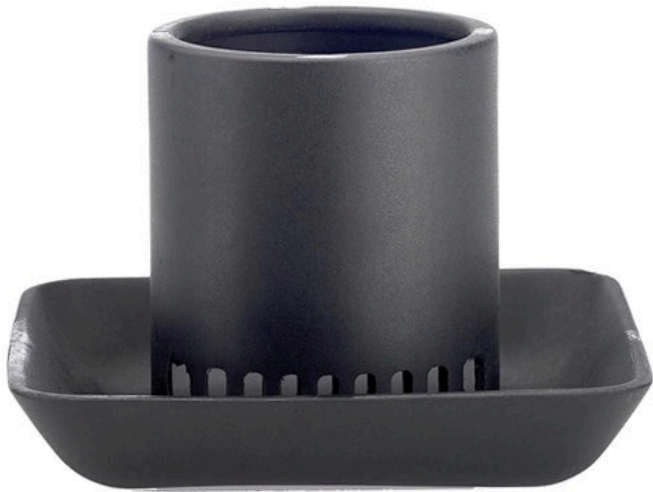




Underhill Gulp Pro Mudguard - For Pumps Post 2020

RG7119



Details

The MudGuard slides on the end of a Gulp Pro with 36" or 72" hose to prevent the pump from clogging in muddy conditions. This easy to attach and remove guard features a built-in filter to minimize mud and debris from burring into the pump.

- Fits Gulp Pro Water Removal Suction Pumps
- Built-in Filter Minimizes Clogging and Makes Pumping Easier
- A "Must Have" Accessory for Dirty Water Use
- Omni-Directional
- Easy On and Off for Cleaning Out Debris

Specifications

Manufacturer	Underhill
Color	Black

Evergreen

C/. Bartomeu Amat, 2, Entlo 1 Terrassa, 08225
+34 931 130 054

<https://evergreen.rrproducts.com/>