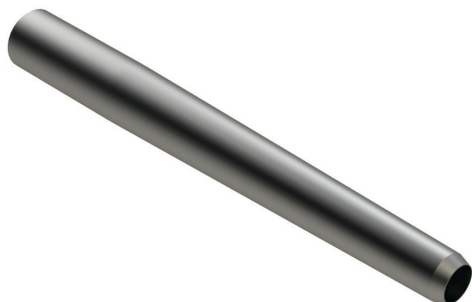




Alloy Hollow Tine - .750MT x 6.500L x .570OD R108-9136



Details

Like Standard Hollow Tines, this tine is also tubular and designed to remove a soil core, but they are constructed from a special high carbon alloy steel. The steel tubing is specially manufactured for R&R to achieve uniform hardness of RC45-48 throughout the tine for excellent wear and toughness. These tines are much tougher and resist bending in extremely hard or rocky soils and you can expect 3-4 times longer life than from the Standard Hollow Tines.

Replaces

Toro 108-9136

Specifications

Manufacturer	R&R Products
A - Tine Type	Alloy Hollow
B - Tine Mounting Dia.	.750 in (19mm)
C - Tine Length	6.5 in (165mm)
D - Tine Tip Outside (Hole) Dia.	.570 in (14.5mm)
E - Tine Tip Inside (Core) Dia.	.400 in (10.2mm)
F - Tine Wall Thickness	.058 in (1.5mm)

Fits Models

Toro ProCore 1298
Toro ProCore 440
Toro ProCore 648
Toro ProCore 660
Toro ProCore 864
Toro ProCore 880
Toro ProCore 648s

Evergreen

C/. Bartomeu Amat, 2, Entlo 1 Terrassa, 08225
+34 931 130 054

<https://evergreen.rrproducts.com/>