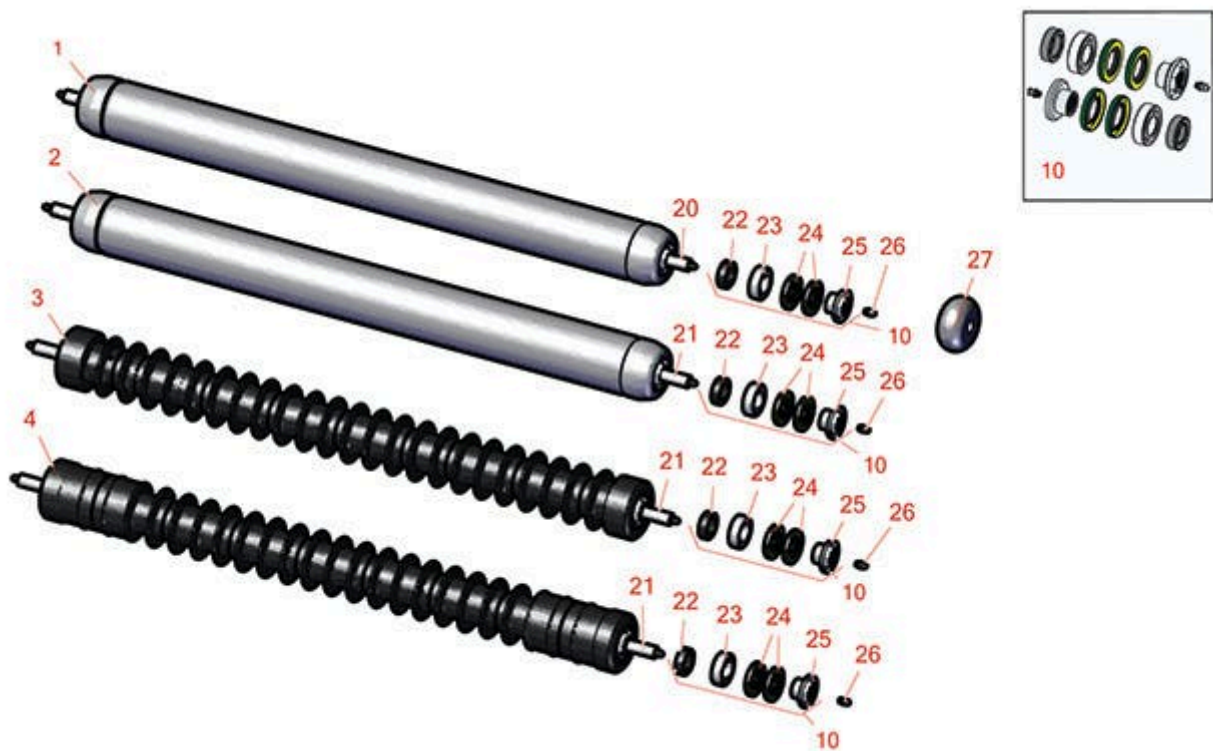




# Replaces Toro Reelmaster 7000-D Parts

32in Cutting Unit - Model 03712

Rollers



All original equipment manufacturers names and part numbers are used for identification purposes only, and we are in no way implying that our products are original equipment parts. Prices subject to change without notice.



# Replaces Toro Reelmaster 7000-D Parts

32in Cutting Unit - Model 03712  
Rollers



Item No	R&R Part No.	OEM Part No.	Description	Qty Req	Order Quantity
---------	--------------	--------------	-------------	---------	----------------

## Overhaul Kit

10	<b>R114-5430</b>	114-5430	Overhaul Kit - Roller	0	
----	------------------	----------	-----------------------	---	--

*Detail Description: Includes 4 ea.: R112-7494 Seals; 2 ea.: R302-5 Grease Zerks, R114-3717 Seals, R112-5290 Bearings & R114-3745 Locknuts:*

## Rollers

1	<b>R112-8961</b>	112-8961	Roller - Smooth Rear Steel - Long - 32" Units	1	
---	------------------	----------	---	---	--

*Detail Description: Constructed with a through shaft, this heavy-duty roller uses greasable ball bearings.:*

2	<b>R114-9384</b>	114-9384	Roller - Smooth Front Steel - 32" Units	1	
---	------------------	----------	---	---	--

*Detail Description: Constructed with a through shaft, this heavy-duty roller uses greasable ball bearings.:*

3	<b>R1503985</b>	117-0990	Roller - Fusion Grooved UHMW Polyethylene - 32" Units	1	
---	-----------------	----------	---	---	--

*Detail Description: Fusion Rollers combine the best features of our UHMW plastic rollers with a heavy-duty internal bearing system. Machined from solid UHMW plastic that prevents build-up of debris. This roller has a patented deep groove design and turns on precision stainless ball bearings and double seals for added life.:*

4	<b>R1503986</b>	119-0640	Roller - Fusion Grooved UHMW Polyethylene Shoulder - 32" Units	1	
---	-----------------	----------	--	---	--

*Detail Description: Fusion Rollers combine the best features of our UHMW plastic rollers with a heavy duty internal bearing system. Machined from solid UHMW plastic that prevents build-up of debris. This roller has a patented deep groove design in the center along with shallow grooves on each end to reduce marking in wet conditions and turns on precision stainless ball bearings and double seals for added life.:*

## Other Parts Available

20	<b>R112-8964</b>	112-8964	Shaft - Long Solid Roller F & R	1	
21	<b>R117-0987</b>	117-0987	Shaft - Front Roller	1	
22	<b>R114-3717</b>	114-3717	Seal	2	

All original equipment manufacturers names and part numbers are used for identification purposes only, and we are in no way implying that our products are original equipment parts. Prices subject to change without notice.



## Replaces Toro Reelmaster 7000-D Parts

32in Cutting Unit - Model 03712  
Rollers



Item No	R&R Part No.	OEM Part No.	Description	Qty Req	Order Quantity
23	<b>R112-5290</b>	112-5290, 251--346, 251-346, 72-5430	Bearing - Stainless	2	
24	<b>R112-7494</b>	112-7494	Seal	4	
25	<b>R114-3745</b>	106-6939, 108-3151, 114-3745, 114-5411	Locknut - Bearing - Stainless	2	
26	<b>R302-5</b>	21-6010, 302-11, 302-37, 302-47, 302-5, 302-57, 302-58, 302-6, 31-0300, 32-9660, 60-0800, 62-3880, 92-4181	Fitting - Grease	2	
27	<b>R119-4276</b>	119-4276	Roller - Tipper	2	

All original equipment manufacturers names and part numbers are used for identification purposes only, and we are in no way implying that our products are original equipment parts. Prices subject to change without notice.