

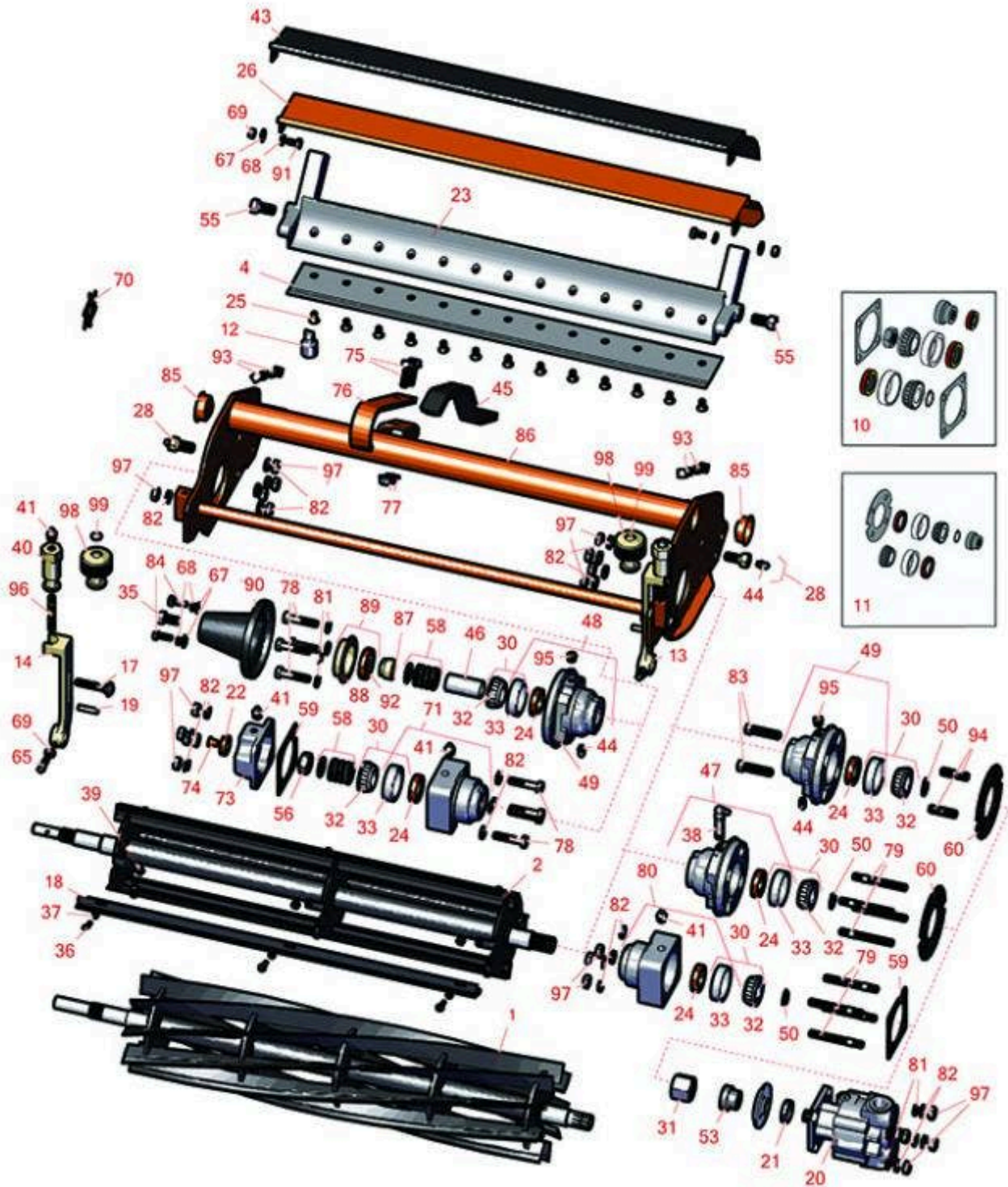


# Replaces Jacobsen Greens King IV Parts

Cutting Unit - LH Models 62841, 62843, 62845 & 62847 &

RH Models 62842, 62844, 62846, & 62848

Reel & Bedknife



All original equipment manufacturers names and part numbers are used for identification purposes only, and we are in no way implying that our products are original equipment parts. Prices subject to change without notice.



## Replaces Jacobsen Greens King IV Parts

Cutting Unit - LH Models 62841, 62843, 62845 & 62847 &  
RH Models 62842, 62844, 62846, & 62848  
Reel & Bedknife



Item No	R&R Part No.	OEM Part No.	Description	Qty Req	Order Quantity
---------	--------------	--------------	-------------	---------	----------------

### **R&R Reels - Replaces Greens King IV (62221) Splined Shaft Reel, 1/2" Shaft End**

1	<b>R503327</b>		Reel - 4 Blade RH/Rear	2	
---	----------------	--	------------------------	---	--

*Detail Description: R&R Reel blades are expertly crafted from premium high carbon-boron alloy steel, heat-treated to perfectly complement both R&R and OEM bedknives. Each reel undergoes precision cylindrical grinding on bearing surfaces, followed by relief grinding for optimal performance. Advanced computer balancing ensures extended reel and bearing life. Backed by our lifetime guarantee against defects in materials and craftsmanship under normal use, R&R Reels deliver unmatched durability and cutting precision you can trust.:*

1	<b>R503330</b>		Reel - 4 Blade LH	1	
---	----------------	--	-------------------	---	--

*Detail Description: R&R Reel blades are expertly crafted from premium high carbon-boron alloy steel, heat-treated to perfectly complement both R&R and OEM bedknives. Each reel undergoes precision cylindrical grinding on bearing surfaces, followed by relief grinding for optimal performance. Advanced computer balancing ensures extended reel and bearing life. Backed by our lifetime guarantee against defects in materials and craftsmanship under normal use, R&R Reels deliver unmatched durability and cutting precision you can trust.:*

1	<b>R506510</b>		Reel - 5 Blade RH/Rear	2	
---	----------------	--	------------------------	---	--

*Detail Description: R&R Reel blades are expertly crafted from premium high carbon-boron alloy steel, heat-treated to perfectly complement both R&R and OEM bedknives. Each reel undergoes precision cylindrical grinding on bearing surfaces, followed by relief grinding for optimal performance. Advanced computer balancing ensures extended reel and bearing life. Backed by our lifetime guarantee against defects in materials and craftsmanship under normal use, R&R Reels deliver unmatched durability and cutting precision you can trust.:*

1	<b>R506515</b>		Reel - 5 Blade LH	1	
---	----------------	--	-------------------	---	--

*Detail Description: R&R Reel blades are expertly crafted from premium high carbon-boron alloy steel, heat-treated to perfectly complement both R&R and OEM bedknives. Each reel undergoes precision cylindrical grinding on bearing surfaces, followed by relief grinding for optimal performance. Advanced computer balancing ensures extended reel and bearing life. Backed by our lifetime guarantee against defects in materials and craftsmanship under normal use, R&R Reels deliver unmatched durability and cutting precision you can trust.:*

1	<b>R506511</b>		Reel - 5 Blade RH Heavy Duty	2	
---	----------------	--	------------------------------	---	--

All original equipment manufacturers names and part numbers are used for identification purposes only, and we are in no way implying that our products are original equipment parts. Prices subject to change without notice.



## Replaces Jacobsen Greens King IV Parts

Cutting Unit - LH Models 62841, 62843, 62845 & 62847 &

RH Models 62842, 62844, 62846, & 62848

Reel & Bedknife



Item No	R&R Part No.	OEM Part No.	Description	Qty Req	Order Quantity
---------	--------------	--------------	-------------	---------	----------------

***Detail Description:** R&R Reel blades are expertly crafted from premium high carbon-boron alloy steel, heat-treated to perfectly complement both R&R and OEM bedknives. Each reel undergoes precision cylindrical grinding on bearing surfaces, followed by relief grinding for optimal performance. Advanced computer balancing ensures extended reel and bearing life. Backed by our lifetime guarantee against defects in materials and craftsmanship under normal use, R&R Reels deliver unmatched durability and cutting precision you can trust.:*

1	<b>R506516</b>		Reel - 5 Blade LH Heavy Duty	1
---	----------------	--	------------------------------	---

***Detail Description:** R&R Reel blades are expertly crafted from premium high carbon-boron alloy steel, heat-treated to perfectly complement both R&R and OEM bedknives. Each reel undergoes precision cylindrical grinding on bearing surfaces, followed by relief grinding for optimal performance. Advanced computer balancing ensures extended reel and bearing life. Backed by our lifetime guarantee against defects in materials and craftsmanship under normal use, R&R Reels deliver unmatched durability and cutting precision you can trust.:*

1	<b>R506620</b>		Reel - 6 Blade RH/Rear	2
---	----------------	--	------------------------	---

***Detail Description:** R&R Reel blades are expertly crafted from premium high carbon-boron alloy steel, heat-treated to perfectly complement both R&R and OEM bedknives. Each reel undergoes precision cylindrical grinding on bearing surfaces, followed by relief grinding for optimal performance. Advanced computer balancing ensures extended reel and bearing life. Backed by our lifetime guarantee against defects in materials and craftsmanship under normal use, R&R Reels deliver unmatched durability and cutting precision you can trust.:*

1	<b>R506630</b>		Reel - 6 Blade LH	1
---	----------------	--	-------------------	---

***Detail Description:** R&R Reel blades are expertly crafted from premium high carbon-boron alloy steel, heat-treated to perfectly complement both R&R and OEM bedknives. Each reel undergoes precision cylindrical grinding on bearing surfaces, followed by relief grinding for optimal performance. Advanced computer balancing ensures extended reel and bearing life. Backed by our lifetime guarantee against defects in materials and craftsmanship under normal use, R&R Reels deliver unmatched durability and cutting precision you can trust.:*

1	<b>R502870</b>	502870	Reel - 9 Blade RH/Rear	2
---	----------------	--------	------------------------	---

***Detail Description:** R&R Reel blades are expertly crafted from premium high carbon-boron alloy steel, heat-treated to perfectly complement both R&R and OEM bedknives. Each reel undergoes precision cylindrical grinding on bearing surfaces, followed by relief grinding for optimal performance. Advanced computer balancing ensures extended reel and bearing life. Backed by our lifetime guarantee against defects in materials and craftsmanship under normal use, R&R Reels deliver unmatched durability and cutting precision you can trust.:*

All original equipment manufacturers names and part numbers are used for identification purposes only, and we are in no way implying that our products are original equipment parts. Prices subject to change without notice.



## Replaces Jacobsen Greens King IV Parts

Cutting Unit - LH Models 62841, 62843, 62845 & 62847 &  
RH Models 62842, 62844, 62846, & 62848  
Reel & Bedknife



Item No	R&R Part No.	OEM Part No.	Description	Qty Req	Order Quantity
1	<b>R503319</b>	5001095, 5003053, 503319	Reel - 7 Blade LH	1	
<i>Detail Description: R&amp;R Reel blades are expertly crafted from premium high carbon-boron alloy steel, heat-treated to perfectly complement both R&amp;R and OEM bedknives. Each reel undergoes precision cylindrical grinding on bearing surfaces, followed by relief grinding for optimal performance. Advanced computer balancing ensures extended reel and bearing life. Backed by our lifetime guarantee against defects in materials and craftsmanship under normal use, R&amp;R Reels deliver unmatched durability and cutting precision you can trust.:</i>					
1	<b>R503320</b>	5001096, 5003054, 5003064, 503320	Reel - 7 Blade RH	1	
<i>Detail Description: R&amp;R Reel blades are expertly crafted from premium high carbon-boron alloy steel, heat-treated to perfectly complement both R&amp;R and OEM bedknives. Each reel undergoes precision cylindrical grinding on bearing surfaces, followed by relief grinding for optimal performance. Advanced computer balancing ensures extended reel and bearing life. Backed by our lifetime guarantee against defects in materials and craftsmanship under normal use, R&amp;R Reels deliver unmatched durability and cutting precision you can trust.:</i>					
1	<b>R502871</b>	502871	Reel - 9 Blade LH	1	
<i>Detail Description: R&amp;R Reel blades are expertly crafted from premium high carbon-boron alloy steel, heat-treated to perfectly complement both R&amp;R and OEM bedknives. Each reel undergoes precision cylindrical grinding on bearing surfaces, followed by relief grinding for optimal performance. Advanced computer balancing ensures extended reel and bearing life. Backed by our lifetime guarantee against defects in materials and craftsmanship under normal use, R&amp;R Reels deliver unmatched durability and cutting precision you can trust.:</i>					
1	<b>R502870H</b>		Reel - 9 Blade Heavy Duty RH/Rear	2	
<i>Detail Description: R&amp;R Reel blades are expertly crafted from premium high carbon-boron alloy steel, heat-treated to perfectly complement both R&amp;R and OEM bedknives. Each reel undergoes precision cylindrical grinding on bearing surfaces, followed by relief grinding for optimal performance. Advanced computer balancing ensures extended reel and bearing life. Backed by our lifetime guarantee against defects in materials and craftsmanship under normal use, R&amp;R Reels deliver unmatched durability and cutting precision you can trust.:</i>					
1	<b>R502871H</b>		Reel - 9 Blade Heavy Duty LH	1	

All original equipment manufacturers names and part numbers are used for identification purposes only, and we are in no way implying that our products are original equipment parts. Prices subject to change without notice.



## Replaces Jacobsen Greens King IV Parts

Cutting Unit - LH Models 62841, 62843, 62845 & 62847 &  
RH Models 62842, 62844, 62846, & 62848  
Reel & Bedknife



Item No	R&R Part No.	OEM Part No.	Description	Qty Req	Order Quantity
---------	--------------	--------------	-------------	---------	----------------

*Detail Description: R&R Reel blades are expertly crafted from premium high carbon-boron alloy steel, heat-treated to perfectly complement both R&R and OEM bedknives. Each reel undergoes precision cylindrical grinding on bearing surfaces, followed by relief grinding for optimal performance. Advanced computer balancing ensures extended reel and bearing life. Backed by our lifetime guarantee against defects in materials and craftsmanship under normal use, R&R Reels deliver unmatched durability and cutting precision you can trust.:*

1	<b>R506633</b>		Reel - 11 Blade RH/Rear	2	
---	----------------	--	-------------------------	---	--

*Detail Description: R&R Reel blades are expertly crafted from premium high carbon-boron alloy steel, heat-treated to perfectly complement both R&R and OEM bedknives. Each reel undergoes precision cylindrical grinding on bearing surfaces, followed by relief grinding for optimal performance. Advanced computer balancing ensures extended reel and bearing life. Backed by our lifetime guarantee against defects in materials and craftsmanship under normal use, R&R Reels deliver unmatched durability and cutting precision you can trust.:*

1	<b>R506634</b>		Reel - 11 Blade LH	1	
---	----------------	--	--------------------	---	--

*Detail Description: R&R Reel blades are expertly crafted from premium high carbon-boron alloy steel, heat-treated to perfectly complement both R&R and OEM bedknives. Each reel undergoes precision cylindrical grinding on bearing surfaces, followed by relief grinding for optimal performance. Advanced computer balancing ensures extended reel and bearing life. Backed by our lifetime guarantee against defects in materials and craftsmanship under normal use, R&R Reels deliver unmatched durability and cutting precision you can trust.:*

### **R&R Reels - Replaces Greens King IV (62228 & UP) Splined & Keyed Shaft, 5/8" Shaft End**

1	<b>R506502</b>		Reel - 5 Blade RH	2	
---	----------------	--	-------------------	---	--

*Detail Description: R&R Reel blades are expertly crafted from premium high carbon-boron alloy steel, heat-treated to perfectly complement both R&R and OEM bedknives. Each reel undergoes precision cylindrical grinding on bearing surfaces, followed by relief grinding for optimal performance. Advanced computer balancing ensures extended reel and bearing life. Backed by our lifetime guarantee against defects in materials and craftsmanship under normal use, R&R Reels deliver unmatched durability and cutting precision you can trust.:*

1	<b>R506503</b>		Reel - 5 Blade LH	1	
---	----------------	--	-------------------	---	--

*Detail Description: R&R Reel blades are expertly crafted from premium high carbon-boron alloy steel, heat-treated to perfectly complement both R&R and OEM bedknives. Each reel undergoes precision cylindrical grinding on bearing surfaces, followed by relief grinding for optimal performance. Advanced computer balancing ensures extended reel and bearing life. Backed by our lifetime guarantee against defects in materials and craftsmanship under normal use, R&R Reels deliver unmatched durability and cutting precision you can trust.:*

All original equipment manufacturers names and part numbers are used for identification purposes only, and we are in no way implying that our products are original equipment parts. Prices subject to change without notice.



## Replaces Jacobsen Greens King IV Parts

Cutting Unit - LH Models 62841, 62843, 62845 & 62847 &  
RH Models 62842, 62844, 62846, & 62848  
Reel & Bedknife



Item No	R&R Part No.	OEM Part No.	Description	Qty Req	Order Quantity
1	<b>R506507</b>		Reel - 5 Blade RH Heavy Duty	2	
<i>Detail Description: R&amp;R Reel blades are expertly crafted from premium high carbon-boron alloy steel, heat-treated to perfectly complement both R&amp;R and OEM bedknives. Each reel undergoes precision cylindrical grinding on bearing surfaces, followed by relief grinding for optimal performance. Advanced computer balancing ensures extended reel and bearing life. Backed by our lifetime guarantee against defects in materials and craftsmanship under normal use, R&amp;R Reels deliver unmatched durability and cutting precision you can trust.:</i>					
1	<b>R506508</b>		Reel - 5 Blade LH Heavy Duty	1	
<i>Detail Description: R&amp;R Reel blades are expertly crafted from premium high carbon-boron alloy steel, heat-treated to perfectly complement both R&amp;R and OEM bedknives. Each reel undergoes precision cylindrical grinding on bearing surfaces, followed by relief grinding for optimal performance. Advanced computer balancing ensures extended reel and bearing life. Backed by our lifetime guarantee against defects in materials and craftsmanship under normal use, R&amp;R Reels deliver unmatched durability and cutting precision you can trust.:</i>					
1	<b>R503376</b>	5001100, 503376	Reel - 9 Blade RH	2	
<i>Detail Description: R&amp;R Reel blades are expertly crafted from premium high carbon-boron alloy steel, heat-treated to perfectly complement both R&amp;R and OEM bedknives. Each reel undergoes precision cylindrical grinding on bearing surfaces, followed by relief grinding for optimal performance. Advanced computer balancing ensures extended reel and bearing life. Backed by our lifetime guarantee against defects in materials and craftsmanship under normal use, R&amp;R Reels deliver unmatched durability and cutting precision you can trust.:</i>					
1	<b>R503375</b>	5001099, 503375	Reel - 9 Blade LH	1	
<i>Detail Description: R&amp;R Reel blades are expertly crafted from premium high carbon-boron alloy steel, heat-treated to perfectly complement both R&amp;R and OEM bedknives. Each reel undergoes precision cylindrical grinding on bearing surfaces, followed by relief grinding for optimal performance. Advanced computer balancing ensures extended reel and bearing life. Backed by our lifetime guarantee against defects in materials and craftsmanship under normal use, R&amp;R Reels deliver unmatched durability and cutting precision you can trust.:</i>					
1	<b>R506512</b>		Reel - 9 Blade RH Heavy Duty	2	

All original equipment manufacturers names and part numbers are used for identification purposes only, and we are in no way implying that our products are original equipment parts. Prices subject to change without notice.



# Replaces Jacobsen Greens King IV Parts

Cutting Unit - LH Models 62841, 62843, 62845 & 62847 &  
RH Models 62842, 62844, 62846, & 62848  
Reel & Bedknife



Item No	R&R Part No.	OEM Part No.	Description	Qty Req	Order Quantity
---------	--------------	--------------	-------------	---------	----------------

*Detail Description: R&R Reel blades are expertly crafted from premium high carbon-boron alloy steel, heat-treated to perfectly complement both R&R and OEM bedknives. Each reel undergoes precision cylindrical grinding on bearing surfaces, followed by relief grinding for optimal performance. Advanced computer balancing ensures extended reel and bearing life. Backed by our lifetime guarantee against defects in materials and craftsmanship under normal use, R&R Reels deliver unmatched durability and cutting precision you can trust.:*

1	<b>R506513</b>		Reel - 9 Blade Heavy Duty LH	1	
---	----------------	--	------------------------------	---	--

*Detail Description: R&R Reel blades are expertly crafted from premium high carbon-boron alloy steel, heat-treated to perfectly complement both R&R and OEM bedknives. Each reel undergoes precision cylindrical grinding on bearing surfaces, followed by relief grinding for optimal performance. Advanced computer balancing ensures extended reel and bearing life. Backed by our lifetime guarantee against defects in materials and craftsmanship under normal use, R&R Reels deliver unmatched durability and cutting precision you can trust.:*

1	<b>R506635</b>	5000029, 5001102	Reel - 11 Blade RH	2	
---	----------------	---------------------	--------------------	---	--

*Detail Description: R&R Reel blades are expertly crafted from premium high carbon-boron alloy steel, heat-treated to perfectly complement both R&R and OEM bedknives. Each reel undergoes precision cylindrical grinding on bearing surfaces, followed by relief grinding for optimal performance. Advanced computer balancing ensures extended reel and bearing life. Backed by our lifetime guarantee against defects in materials and craftsmanship under normal use, R&R Reels deliver unmatched durability and cutting precision you can trust.:*

1	<b>R506636</b>	5000028, 5001101, 506636	Reel - 11 Blade LH	1	
---	----------------	--------------------------------	--------------------	---	--

*Detail Description: R&R Reel blades are expertly crafted from premium high carbon-boron alloy steel, heat-treated to perfectly complement both R&R and OEM bedknives. Each reel undergoes precision cylindrical grinding on bearing surfaces, followed by relief grinding for optimal performance. Advanced computer balancing ensures extended reel and bearing life. Backed by our lifetime guarantee against defects in materials and craftsmanship under normal use, R&R Reels deliver unmatched durability and cutting precision you can trust.:*

## R&R Brush Reels Available - Replaces Greens King IV (62221) Splined Shaft Reel, 1/2" Shaft End

2	<b>R101487</b>		Brush Reel - RH-Rear	2	
---	----------------	--	----------------------	---	--

All original equipment manufacturers names and part numbers are used for identification purposes only, and we are in no way implying that our products are original equipment parts. Prices subject to change without notice.



## Replaces Jacobsen Greens King IV Parts

Cutting Unit - LH Models 62841, 62843, 62845 & 62847 &

RH Models 62842, 62844, 62846, & 62848

Reel & Bedknife



Item No	R&R Part No.	OEM Part No.	Description	Qty Req	Order Quantity
---------	--------------	--------------	-------------	---------	----------------

*Detail Description:* R&R Products Brush Reels are an exciting concept in greens maintenance to clean sand and other debris left on grass surfaces after top dressing. If left on the turf, this sand and debris can cause dulling and excessive wear on mowing reels and bed knives. However, with the use of R&R Brush Reels, sand and debris are easily swept into conventional grass baskets. R&R Brush Reels are also used to stand turf up before mowing to give a cleaner, more uniform and truer putting surface. Designed with four replaceable brushes mounted in a metal frame, simply replace regular mowing reels with R&R Brush Reels and adjust bedknife to clear the brushes. The height of cut should be set to the top of the grass blades or slightly below. \*Remove bedknife for the removal of pine needles.<BR><BR>**SUGGESTED USAGE:** Verticutting - Dew Removal - Leaf Clean Up - Thatch Prevention Prior to Overseeding - Grooming before Mowing - Removal of Excessive Top Dressing:

2	<b>R101488</b>		Brush Reel - LH	1	
---	----------------	--	-----------------	---	--

*Detail Description:* R&R Products Brush Reels are an exciting concept in greens maintenance to clean sand and other debris left on grass surfaces after top dressing. If left on the turf, this sand and debris can cause dulling and excessive wear on mowing reels and bed knives. However, with the use of R&R Brush Reels, sand and debris are easily swept into conventional grass baskets. R&R Brush Reels are also used to stand turf up before mowing to give a cleaner, more uniform and truer putting surface. Designed with four replaceable brushes mounted in a metal frame, simply replace regular mowing reels with R&R Brush Reels and adjust bedknife to clear the brushes. The height of cut should be set to the top of the grass blades or slightly below. \*Remove bedknife for the removal of pine needles.<BR><BR>**SUGGESTED USAGE:** Verticutting - Dew Removal - Leaf Clean Up - Thatch Prevention Prior to Overseeding - Grooming before Mowing - Removal of Excessive Top Dressing:

### **R&R Brush Reels Available - Replaces Greens King IV (62228 & UP) Splined & Keyed Shaft, 5/8" Shaft End**

2	<b>R101490</b>		Brush Reel - RH	2	
---	----------------	--	-----------------	---	--

*Detail Description:* R&R Products Brush Reels are an exciting concept in greens maintenance to clean sand and other debris left on grass surfaces after top dressing. If left on the turf, this sand and debris can cause dulling and excessive wear on mowing reels and bed knives. However, with the use of R&R Brush Reels, sand and debris are easily swept into conventional grass baskets. R&R Brush Reels are also used to stand turf up before mowing to give a cleaner, more uniform and truer putting surface. Designed with four replaceable brushes mounted in a metal frame, simply replace regular mowing reels with R&R Brush Reels and adjust bedknife to clear the brushes. The height of cut should be set to the top of the grass blades or slightly below. \*Remove bedknife for the removal of pine needles.<BR><BR>**SUGGESTED USAGE:** Verticutting - Dew Removal - Leaf Clean Up - Thatch Prevention Prior to Overseeding - Grooming before Mowing - Removal of Excessive Top Dressing:

2	<b>R101491</b>		Brush Reel - LH Keyed Shaft	1	
---	----------------	--	-----------------------------	---	--

All original equipment manufacturers names and part numbers are used for identification purposes only, and we are in no way implying that our products are original equipment parts. Prices subject to change without notice.



## Replaces Jacobsen Greens King IV Parts

Cutting Unit - LH Models 62841, 62843, 62845 & 62847 &

RH Models 62842, 62844, 62846, & 62848

Reel & Bedknife



Item No	R&R Part No.	OEM Part No.	Description	Qty Req	Order Quantity
---------	--------------	--------------	-------------	---------	----------------

***Detail Description:** R&R Products Brush Reels are an exciting concept in greens maintenance to clean sand and other debris left on grass surfaces after top dressing. If left on the turf, this sand and debris can cause dulling and excessive wear on mowing reels and bed knives. However, with the use of R&R Brush Reels, sand and debris are easily swept into conventional grass baskets. R&R Brush Reels are also used to stand turf up before mowing to give a cleaner, more uniform and truer putting surface. Designed with four replaceable brushes mounted in a metal frame, simply replace regular mowing reels with R&R Brush Reels and adjust bedknife to clear the brushes. The height of cut should be set to the top of the grass blades or slightly below. \*Remove bedknife for the removal of pine needles.<BR><BR>**SUGGESTED USAGE:** Verticutting - Dew Removal - Leaf Clean Up - Thatch Prevention Prior to Overseeding - Grooming before Mowing - Removal of Excessive Top Dressing:*

### **R&R Bedknives, Lifetime Guaranteed**

4	<b>R503477</b>	101261, 503027, 503477, 549397	Bedknife - Thick .156-.438 HOC	1
---	----------------	---	--------------------------------	---

***Detail Description:** R&R Bedknives are manufactured from high carbon-boron alloy steel and then hardened to RC46-49 to match the temper of our reel blades and original equipment reels. Bedknives are surface ground on the top and front edge and straightened three times before being packaged with oil for rust prevention. All R&R Bedknives now have an increased front edge grind for added life. All R&R Bedknives are guaranteed against defects in material and workmanship under normal use for the life of the part.:*

4	<b>R101262</b>		Bedknife - Super Thick 5/16	1
---	----------------	--	-----------------------------	---

***Detail Description:** R&R Bedknives are manufactured from high carbon-boron alloy steel and then hardened to RC46-49 to match the temper of our reel blades and original equipment reels. Bedknives are surface ground on the top and front edge and straightened three times before being packaged with oil for rust prevention. All R&R Bedknives now have an increased front edge grind for added life. All R&R Bedknives are guaranteed against defects in material and workmanship under normal use for the life of the part.:*

4	<b>R503478</b>	101260, 503028, 503478, 549504	Bedknife - Thin .125-.219 HOC	1
---	----------------	---	-------------------------------	---

All original equipment manufacturers names and part numbers are used for identification purposes only, and we are in no way implying that our products are original equipment parts. Prices subject to change without notice.



## Replaces Jacobsen Greens King IV Parts

Cutting Unit - LH Models 62841, 62843, 62845 & 62847 &

RH Models 62842, 62844, 62846, & 62848

Reel & Bedknife



Item No	R&R Part No.	OEM Part No.	Description	Qty Req	Order Quantity
---------	--------------	--------------	-------------	---------	----------------

*Detail Description: R&R Bedknives are manufactured from high carbon-boron alloy steel and then hardened to RC46-49 to match the temper of our reel blades and original equipment reels. Bedknives are surface ground on the top and front edge and straightened three times before being packaged with oil for rust prevention. All R&R Bedknives now have an increased front edge grind for added life. All R&R Bedknives are guaranteed against defects in material and workmanship under normal use for the life of the part.:*

4	<b>R503479</b>	503029, 503479	Bedknife - Tournament .094-.156 HOC	1	
---	----------------	-------------------	--	---	--

*Detail Description: R&R Bedknives are manufactured from high carbon-boron alloy steel and then hardened to RC46-49 to match the temper of our reel blades and original equipment reels. Bedknives are surface ground on the top and front edge and straightened three times before being packaged with oil for rust prevention. All R&R Bedknives now have an increased front edge grind for added life. All R&R Bedknives are guaranteed against defects in material and workmanship under normal use for the life of the part.:*

4	<b>R4234900</b>	5000927	Bedknife - Tournament .063-.110	1	
---	-----------------	---------	---------------------------------	---	--

*Detail Description: R&R Bedknives are manufactured from high carbon-boron alloy steel and then hardened to RC46-49 to match the temper of our reel blades and original equipment reels. Bedknives are surface ground on the top and front edge and straightened three times before being packaged with oil for rust prevention. All R&R Bedknives now have an increased front edge grind for added life. All R&R Bedknives are guaranteed against defects in material and workmanship under normal use for the life of the part.:*

4	<b>R5002887</b>	5002887	Bedknife - Micro Cut - .082-.109	1	
---	-----------------	---------	----------------------------------	---	--

*Detail Description: R&R Bedknives are manufactured from high carbon-boron alloy steel and then hardened to RC46-49 to match the temper of our reel blades and original equipment reels. Bedknives are surface ground on the top and front edge and straightened three times before being packaged with oil for rust prevention. All R&R Bedknives now have an increased front edge grind for added life. All R&R Bedknives are guaranteed against defects in material and workmanship under normal use for the life of the part.:*

4	<b>R5003150</b>	5003150	Bedknife - Low Cut	1	
---	-----------------	---------	--------------------	---	--

*Detail Description: R&R Bedknives are manufactured from high carbon-boron alloy steel and then hardened to RC46-49 to match the temper of our reel blades and original equipment reels. Bedknives are surface ground on the top and front edge and straightened three times before being packaged with oil for rust prevention. All R&R Bedknives now have an increased front edge grind for added life. All R&R Bedknives are guaranteed against defects in material and workmanship under normal use for the life of the part.:*

### R&R Razor Tool Steel Bedknives, Lifetime Guaranteed

All original equipment manufacturers names and part numbers are used for identification purposes only, and we are in no way implying that our products are original equipment parts. Prices subject to change without notice.



## Replaces Jacobsen Greens King IV Parts

Cutting Unit - LH Models 62841, 62843, 62845 & 62847 &

RH Models 62842, 62844, 62846, & 62848

Reel & Bedknife



Item No	R&R Part No.	OEM Part No.	Description	Qty Req	Order Quantity
4	<b>R101520</b>		Bedknife - Razor Tool Steel - 22 Micro Cut	1	

*Detail Description: R&R Razor bedknives are manufactured from premium alloy tool steel steel and then hardened to RC48-51 to match the temper of our Razor reel blades and original equipment premium series reels. Bedknives are surface ground on the top and front edge and specially packaged for rust prevention. All R&R Bedknives now have an increased front edge grind for added life. All R&R Bedknives are guaranteed against defects in material and workmanship under normal use for the life of the part. You can expect up to double the life over standard bedknives.:*

4	<b>R101521</b>		Bedknife - Razor Tool Steel - 22 Tournament Cut	1	
---	----------------	--	---	---	--

*Detail Description: R&R Razor bedknives are manufactured from premium alloy tool steel steel and then hardened to RC48-51 to match the temper of our Razor reel blades and original equipment premium series reels. Bedknives are surface ground on the top and front edge and specially packaged for rust prevention. All R&R Bedknives now have an increased front edge grind for added life. All R&R Bedknives are guaranteed against defects in material and workmanship under normal use for the life of the part. You can expect up to double the life over standard bedknives.:*

### Overhaul Kits & Service Tools

10	<b>R506555</b>		Overhaul Kit - Cutting Unit	0	
----	----------------	--	-----------------------------	---	--

*Tech Note: Fits GK IV (62221) with square bearing housings.:*

*Detail Description: Includes 2 ea.: R336962 Seals, R345473 Gaskets, R254-78 Bearings, R254-79 Bearing Cups; 1 ea.: R335435 Seal, R337370 Coupling, R458013 Ring & R444713 Locknut:*

11	<b>R100125</b>		Overhaul Kit - Cutting Unit	0	
----	----------------	--	-----------------------------	---	--

*Tech Note: Fits GK IV (62228 & 62229) with round bearing housings.:*

*Detail Description: Includes 2 ea.: R336962 Seals, R254-78 Bearings, R254-79 Cups; 1 ea.:R337677 Seal, R458013 Ring, R364901Gasket, R337370 Coupling:*

12	<b>R101272T</b>		Bedknife Screw Driver Tool	0	
----	-----------------	--	----------------------------	---	--

*Tech Note: Easily install and remove bed knife screws with the help of a ratchet. Tool manufactured with hardened alloy steel.:*

All original equipment manufacturers names and part numbers are used for identification purposes only, and we are in no way implying that our products are original equipment parts. Prices subject to change without notice.



## Replaces Jacobsen Greens King IV Parts

Cutting Unit - LH Models 62841, 62843, 62845 & 62847 &

RH Models 62842, 62844, 62846, & 62848

Reel & Bedknife



Item No	R&R Part No.	OEM Part No.	Description	Qty Req	Order Quantity
---------	--------------	--------------	-------------	---------	----------------

*Detail Description: Easily install and remove bed knife screws with the help of a ratchet. Tool manufactured with hardened alloy steel.:*

### Other Parts Available

13	<b>R153980</b>	153980, 3008438	Bracket - Front Roller	1	
13	<b>R163232</b>	163232	Bracket - Extra Long - Front Roller	1	
14	<b>R153979</b>	153979, 3008439	Bracket - Front Roller	1	
14	<b>R163231</b>	163231	Bracket - Extra Long - Front Roller	1	
17	<b>R441674</b>	441674	Screw - 5/16-18 x 1-3/4 Carriage	2	
18	<b>R150481</b>	150481	Brush Assy - Brush Reel	4	
19	<b>R461256</b>	461256	Pin - 1/4 x 1	2	
20	<b>R122164</b>	122164	Motor - Reel	3	
<i>Tech Note: Fits GKIV 4 Bolt Mount:</i>					
20	<b>R502737</b>	502737	Seal Kit - Fits R122164 Hyd Motor	1	
21	<b>R353-585</b>		Seal - High Pressure - Reel Motor	1	
22	<b>R335435</b>	335435	Seal - Reel Housing	1	
23	<b>R220278</b>	121856, 220278, 5000415	Backing Bar - Cast	1	
24	<b>R325472</b>	325472	Seal	4	
24	<b>R336962</b>	336962	Seal	4	

All original equipment manufacturers names and part numbers are used for identification purposes only, and we are in no way implying that our products are original equipment parts. Prices subject to change without notice.



## Replaces Jacobsen Greens King IV Parts

Cutting Unit - LH Models 62841, 62843, 62845 & 62847 &

RH Models 62842, 62844, 62846, & 62848

Reel & Bedknife



Item No	R&R Part No.	OEM Part No.	Description	Qty Req	Order Quantity
25	<b>R101272</b>	101272, 3009138, 402578, 800813	Screw - Bedknife 1/4-20 x 1/2	13	
26	<b>R390950</b>	126724, 2810043, 390950	Shield - Grass	1	
28	<b>R1002224</b>	1002224	Bolt - Rear Roller 3/8-24	2	
<i>Detail Description: Incl Grease Zerk:</i>					
28	<b>R345470</b>	1002226, 345470	Bolt - Rear Roller 7/16-20	2	
<i>Detail Description: Incl. Grease Zerk:</i>					
30	<b>R500534</b>	500534, R500534	Bearing - with Cup	2	
<i>Detail Description: Kit includes: 1 ea R254-78- Bearing Cone &amp; R254-79 Bearing Cone:</i>					
31	<b>R345477</b>	345477	Nut - Coupling LH (RH Threads)	2	
<i>Detail Description: Right Hand Threads:</i>					
31	<b>R345478</b>	345478	Nut - Coupling RH (LH Threads)	2	
<i>Detail Description: Left Hand Threads:</i>					
32	<b>R254-78</b>	254-78, 385174, 4121174, 4135152	Tapered Bearing Cone	2	
33	<b>R254-79</b>	254-79, 4121175	Cup - Bearing	2	
<i>Detail Description: Use R254-79M installation mandrel to properly install race.:</i>					
35	<b>R400294</b>	400294	Screw - 3/8 24 x 3/4 Hex C/Zinc	1	

All original equipment manufacturers names and part numbers are used for identification purposes only, and we are in no way implying that our products are original equipment parts. Prices subject to change without notice.



## Replaces Jacobsen Greens King IV Parts

Cutting Unit - LH Models 62841, 62843, 62845 & 62847 &

RH Models 62842, 62844, 62846, & 62848

Reel & Bedknife



Item No	R&R Part No.	OEM Part No.	Description	Qty Req	Order Quantity
36	<b>R150425</b>	150425	Bolt - Hex HD 8-32 x 5/8	12	
37	<b>R150426</b>	150426	Washer - 8 SAE	12	
38	<b>R363896</b>	363896	Fitting - Grease w/Extension	2	
39	<b>R3296-9</b>		Locknut - Comb	12	
40	<b>R365009</b>	3005692, 365009, 365170, 441674	Knob - Adjusting Roller	2	
41	<b>R471219</b>	366852, 471219	Zerk - Grease	2	
43	<b>R2810043</b>	2810043	Shield - Grass	1	
44	<b>R302-5</b>	302-5, 471214, 471223, 471226	Fitting - Grease	2	
45	<b>R3010293</b>	3010293	Stop - Mower	1	
46	<b>R367164</b>	367164	Spacer - Reel	1	
47	<b>R163396</b>	163396	Housing - Reel Brg Motor End	1	
<i>Detail Description: Includes: 4 ea: R361097 Stud; 1 ea: R254-79 Cup, R336962 Seal, R363896 Grease Fitting;</i>					
48	<b>R164144</b>	1000480, 163397, 164144, 2000060	Housing - Reel Bearing	1	
<i>Detail Description: Includes R336962 Seal, R302-5 Zerk, R170714 Relief Fitting &amp; R254-79 Cup:</i>					
49	<b>R164146</b>	163679, 164146	Housing - Reel Bearing - Motor End	1	

*Tech Note: Housing has no studs, uses 2 bolts:*

All original equipment manufacturers names and part numbers are used for identification purposes only, and we are in no way implying that our products are original equipment parts. Prices subject to change without notice.



## Replaces Jacobsen Greens King IV Parts

Cutting Unit - LH Models 62841, 62843, 62845 & 62847 &

RH Models 62842, 62844, 62846, & 62848

Reel & Bedknife



Item No	R&R Part No.	OEM Part No.	Description	Qty Req	Order Quantity
<i>Detail Description: Includes: 1 ea: R170714 Fitting, R254-79 Cup, R302-5 Fitting &amp; R336962 Seal:</i>					
49	<b>R101328</b>		Housing - Bearing Motor End	1	
<i>Detail Description: Includes R302-5, R336962, R170714, R101327 &amp; Cup Portion of R500534. Housing has 2 studs, uses no bolts:</i>					
50	<b>R458013</b>	458013	Ring - Retaining	1	
53	<b>R4247911</b>	162567, 337370, 4247911	Coupling - Hyd Motor - Glass Filled	1	
53	<b>R3001720</b>	3001720	Coupler - Iron - Hyd Motor	1	
55	<b>R315298</b>	315298	Bolt - Bed Bar	2	
56	<b>R444713</b>	444713	Locknut - 5/8-18 Hex Center	1	
56	<b>R453020</b>	453020	Washer - 5/8 SAE Flat Z	1	
58	<b>R363047</b>	348846, 363047	Spring - Reel	1	
58	<b>R5002151</b>	5002151	Hardware Kit - Spring/Washer	1	
<i>Detail Description: Includes 1 ea: R304745 Washer, R363047 Spring:</i>					
59	<b>R345473</b>	345473	Gasket - Reel Motor	1	
60	<b>R364901</b>	364901	Gasket - Reel Motor	1	
65	<b>R352737</b>	352737	Screw - Set 1/4 x 7/8 Sq Head	2	
67	<b>R453023</b>	453023	Washer - Flat 1/4	2	
68	<b>R3253-3</b>	3253-3, 446128, 446130	Washer - Lock 1/4	4	
69	<b>R443102</b>	443102	Nut - 1/4-20 Yellow Zinc	2	

All original equipment manufacturers names and part numbers are used for identification purposes only, and we are in no way implying that our products are original equipment parts. Prices subject to change without notice.



## Replaces Jacobsen Greens King IV Parts

Cutting Unit - LH Models 62841, 62843, 62845 & 62847 &  
RH Models 62842, 62844, 62846, & 62848  
Reel & Bedknife



Item No	R&R Part No.	OEM Part No.	Description	Qty Req	Order Quantity
70	<b>R363808</b>	363808	Blade - V-Cut 2 Dia	85	
71	<b>R239055</b>	239055	Housing - Reel Bearing Short	1	
<i>Detail Description: Includes R336962 Seal &amp; R254-79 Bearing Cup:</i>					
73	<b>R269037</b>	269037	Cap - Reel Housing	1	
74	<b>R352132</b>	352132	Caplug - Reel Shaft End	1	
75	<b>R403751</b>	403751	Bolt - Serrated Washer HD	2	
76	<b>R354928</b>	354928	Stop - Mower	1	
77	<b>R445722</b>	445722	Nut - Serrated Washer	2	
78	<b>R400192</b>	400192	Bolt - Hex HD 5/16-18 x 1-1/2	4	
79	<b>R361097</b>	361097	Stud - Reel Brg Housing	4	
80	<b>R162558</b>	162558	Housing - Reel Bearing Tall	1	
<i>Detail Description: Includes: 4 ea: R361097 Stud; 1 ea: R254-79 Cup, R336962 Seal, R471219 Grease Fitting:</i>					
81	<b>R453009</b>	3256-23, 452004, 452006, 452008, 453009	Washer - Flat 5/16 SAE	4	
82	<b>R446136</b>	446134, 446136	Washer - Lock 5/16 Zinc	12	
83	<b>R441812</b>	441812	Screw - 3/8-1-1/2 Sq HD Set	2	
84	<b>R321-4</b>	321-4, 400108	Bolt - Hex HD 1/4-20 x 3/4	1	
85	<b>R285-14</b>		Plug - Pipe Frame	2	
86	<b>R4256225</b>	4256225	Frame - 22 in Cutting Unit	1	

All original equipment manufacturers names and part numbers are used for identification purposes only, and we are in no way implying that our products are original equipment parts. Prices subject to change without notice.



## Replaces Jacobsen Greens King IV Parts

Cutting Unit - LH Models 62841, 62843, 62845 & 62847 &

RH Models 62842, 62844, 62846, & 62848

Reel & Bedknife



Item No	R&R Part No.	OEM Part No.	Description	Qty Req	Order Quantity
87	<b>R364900</b>	364900	Nut - Reel Tension	1	
88	<b>R363814</b>	163892, 363814	Spacer - Seal	1	
89	<b>R163398</b>	163398, 163892	Seal - Spacer Assy	1	
90	<b>R338675</b>	338675, 557775	Cover - Shaft End	1	
91	<b>R400104</b>	400104	Bolt - Hex HD 1/4-20 x 1/2	2	
92	<b>R337677</b>	315257, 337677	Seal - Oil	1	
93	<b>R412506</b>	412503, 412506	Screw - Bed Bar Adjusting	4	
94	<b>R101327</b>		Stud - Housing	2	
<i>Detail Description: Fits R101328 Only:</i>					
95	<b>R170714</b>	170714, 471240, 471242	Fitting - Pressure Relief	2	
96	<b>R343616</b>	343616, 443102	Stud	2	
97	<b>R443106</b>	443106	Nut - 5/16-18 Y/Zinc Plated	12	
98	<b>R343617</b>	343617	Knob - Adjusting	2	
99	<b>R472518</b>	472518	Plug - Adjusting Knob	2	

All original equipment manufacturers names and part numbers are used for identification purposes only, and we are in no way implying that our products are original equipment parts. Prices subject to change without notice.