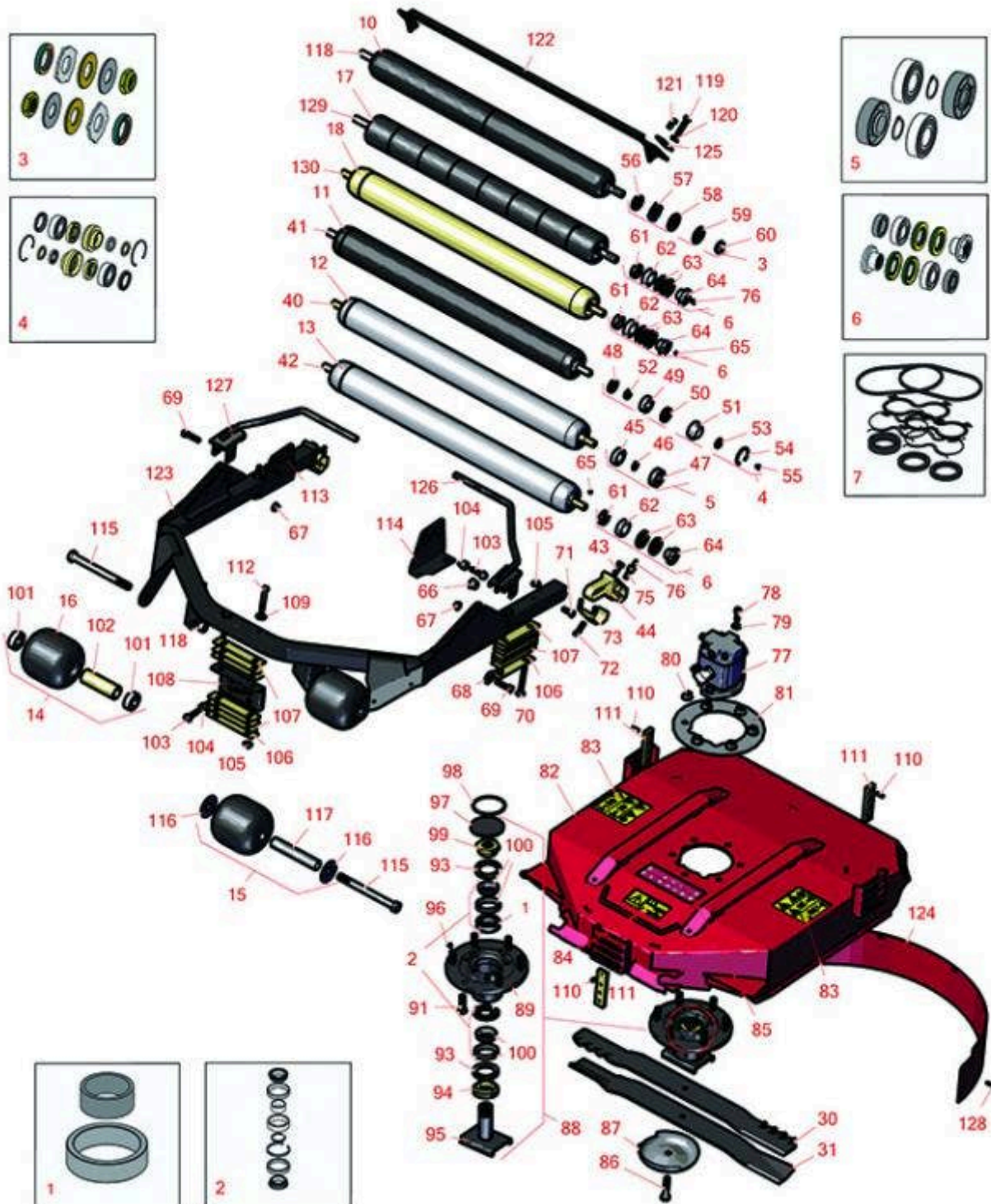




# Replaces Toro Groundsmaster 4500-D Parts

*Traction Unit with Yanmar Engine - Model 30881A*  
*27in Rotary Unit - Model 30834*



All original equipment manufacturers names and part numbers are used for identification purposes only, and we are in no way implying that our products are original equipment parts. Prices subject to change without notice.



# Replaces Toro Groundsmaster 4500-D Parts

Traction Unit with Yanmar Engine - Model 30881A  
27in Rotary Unit - Model 30834



Item No	R&R Part No.	OEM Part No.	Description	Qty Req	Order Quantity
---------	--------------	--------------	-------------	---------	----------------

## Overhaul Kits

1	<b>R100-5704</b>	100-5704	Spacer - Set Fits R100-5703	1	
---	------------------	----------	-----------------------------	---	--

2	<b>R100-5703</b>	100-5703	Bearing - w/Spacer Assy	1	
---	------------------	----------	-------------------------	---	--

3	<b>R101399</b>		Overhaul Kit - UHMW 2 Pc Roller	1	
---	----------------	--	---------------------------------	---	--

*Tech Note: Fits all R&R 2-1/2" - 3-1/2" Dia. Black UHMW Plastic Rollers that do not use ball bearings.. Includes 2 ea.: R1503230 Star Washers, R1503470 Seals, R150333 Thrust Washers, R3296-15 Locknuts, R1503471 Bronze Thrust Washers:*

4	<b>R106-9606</b>	106-9606	Overhaul Kit - Roller	1	
---	------------------	----------	-----------------------	---	--

*Tech Note: Include 2 ea: R343667 Bearings, R253-70 Seals, R32120-62 Retaining Rings, R93-1251 Seals, R93-1252 Seals, R93-2931 Washers, R93-3007 Seals:*

5	<b>R107-1595</b>	107-1595	Overhaul Kit - Roller	1	
---	------------------	----------	-----------------------	---	--

*Tech Note: Includes 2 ea.: R251-347 Bearings, R32120-15 Snap Rings & R150614 Seals:*

6	<b>R114-5430</b>	114-5430	Overhaul Kit - Roller	1	
---	------------------	----------	-----------------------	---	--

*Tech Note: Includes 4 ea.: R112-7494 Seals; 2 ea.: R302-5 Grease Zerks, R114-3717 Seals, R112-5290 Bearings & R114-3745 Locknuts:*

7	<b>R117-0235</b>	117-0235	Seal Kit - Fits R117-5141 Hyd Motor	1	
---	------------------	----------	-------------------------------------	---	--

## R&R Rollers

10	<b>R1013902</b>		Roller - Smooth UHMW Polyethylene	1	
----	-----------------	--	-----------------------------------	---	--

*Tech Note: Machined from solid UHMW, this low maintenance roller uses a 1" solid stainless steel shaft and requires no grease. UHMW material prevents build-up of debris.:*

11	<b>R107-1996</b>	107-1996, 112-5273, 112-5291	Roller - Regreasable	1	
----	------------------	------------------------------------	----------------------	---	--

12	<b>R105-6772</b>	105-1227, 105-6772	Roller - Smooth 3in	1	
----	------------------	-----------------------	---------------------	---	--

All original equipment manufacturers names and part numbers are used for identification purposes only, and we are in no way implying that our products are original equipment parts. Prices subject to change without notice.



# Replaces Toro Groundsmaster 4500-D Parts



Traction Unit with Yanmar Engine - Model 30881A  
27in Rotary Unit - Model 30834

Item No	R&R Part No.	OEM Part No.	Description	Qty Req	Order Quantity
13	<b>R112-5265</b>	112-5265, 112-5272	Roller Assy - Regreasable	1	
14	<b>R136-2908</b>	104-1092, 115-3418, 136-2908	Roller Assy - Cast Iron	2	
15	<b>R150495</b>		Roller - Smooth UHMW Polyethylene Front 5 in Dia	2	
16	<b>R104-1093</b>	104-1093	Roller - Cast Iron	1	
17	<b>R1013910</b>		Roller - Fusion Smooth UHMW Polyethylene	1	
<i>Tech Note: Machined from solid UHMW plastic that prevents build-up of debris. This roller turns on precision stainless ball bearings.:</i>					
18	<b>R137-6141</b>	137-6141	Roller Assy - with Hardened Shaft	1	
30	<b>RRB4065-2700</b>	107-0235-03	Mower Blade - Mulcher 27 x 2.5in x 1/2 Mt Hole	1	
31	<b>R108-9026-03</b>	108-9026-03	Mower Blade - 27 in Combo	1	
<b>Other Part Available</b>					
40	<b>R104-9480</b>	104-9480	Shaft - Roller	1	
41	<b>R107-1984</b>	107-1984	Shaft - Roller	1	
42	<b>R112-5266</b>	112-5266	Shaft- Long - Rear Roller	1	
43	<b>R323-6</b>	01-150-0010, 01-178-0608, 20-47-AD, 20-47-AGD, 3224-2, 323-6, 49-3510, 908034P, 908332	Bolt - Hex HD 3/8-16 x 1 GR5 YZ	2	

All original equipment manufacturers names and part numbers are used for identification purposes only, and we are in no way implying that our products are original equipment parts. Prices subject to change without notice.



# Replaces Toro Groundsmaster 4500-D Parts



*Traction Unit with Yanmar Engine - Model 30881A  
27in Rotary Unit - Model 30834*

Item No	R&R Part No.	OEM Part No.	Description	Qty Req	Order Quantity
44	<b>R112-5268</b>	100-5768, 100-5768-01, 104-9487, 105-3991, 112-5268	Mount - Roller - Rotary Deck	2	
45	<b>R251-347</b>	251-347, 72-5690	Bearing - Ball	2	
46	<b>R32120-15</b>	32120-15	Ring - Snap	2	
47	<b>R150614</b>	99-3842	Seal	2	
48	<b>R93-3007</b>	93-3007	Seal	2	
49	<b>R343667</b>	109966, 251-6, 38-7820	Bearing - Ball	2	
50	<b>R93-1251</b>	93-1251	Seal	2	
51	<b>R93-1252</b>	93-1252	Seal - Outer	2	
52	<b>R253-70</b>	253-70	Seal	2	
53	<b>R93-2931</b>	93-2931	Washer - Roller Seal	2	
54	<b>R32120-62</b>	32120-62	Ring - Retaining	2	
55	<b>R1851</b>	107-1997	Fitting - Grease - Flush	2	
56	<b>R1503470</b>		Seal - Inner Wiper	2	
57	<b>R1503230</b>		Washer - Thrust Outer Keyed	2	
58	<b>R1503471</b>		Washer - Thrust SAE660 Bronze	2	
59	<b>R150333</b>		Washer - Flat Keyed Outer SS	2	
60	<b>R3296-15</b>	116-7306, 32118-5, 32127-23, 32127-47, 3296-15	Locknut - 3/4-16 Nylon Jam	2	

All original equipment manufacturers names and part numbers are used for identification purposes only, and we are in no way implying that our products are original equipment parts. Prices subject to change without notice.



# Replaces Toro Groundsmaster 4500-D Parts



*Traction Unit with Yanmar Engine - Model 30881A  
27in Rotary Unit - Model 30834*

Item No	R&R Part No.	OEM Part No.	Description	Qty Req	Order Quantity
61	<b>R114-3717</b>	114-3717	Seal	2	
62	<b>R112-5290</b>	112-5290, 251--346, 251-346, 72-5430	Bearing - Stainless	2	
63	<b>R112-7494</b>	112-7494	Seal	4	
64	<b>R114-3745</b>	114-3745, 114-5411	Locknut - Bearing - Stainless	2	
65	<b>R150690</b>	108-0989	Screw - Set 1/4-20 x 1/4	2	
66	<b>R95-8803</b>	95-8803	Bushing - Flange	2	
67	<b>R104-8301</b>	104-8301, 104-9301, 109-6658, 133-7570	Locknut - 3/8-16 Nylon Flanged	2	
68	<b>R93-8806</b>	93-8806	Washer-Hardened	2	
69	<b>R323-11</b>	01-150-1440, 01-178-0618, 20-52-AD, 3224-7, 323-11	Bolt - 3/8-16 x 2 1/4 GR5	6	
70	<b>R3231-9</b>	3231-9	Bolt - Carriage 3/8-16 x 2 3/4"	4	
71	<b>R3234-11</b>	3234-11	Bolt - Hex Washer HD	4	
72	<b>R400264</b>	01-150-0180, 01-178-0610, 20-48-AD, 20-48-AGD, 32-9160, 3224-3, 323-29, 323-7, 400264, 908035P	Bolt - Hex HD 3/8-16 x 1-1/4	2	
73	<b>R107-7816</b>	107-7816	Bracket-Skid	2	

All original equipment manufacturers names and part numbers are used for identification purposes only, and we are in no way implying that our products are original equipment parts. Prices subject to change without notice.



# Replaces Toro Groundsmaster 4500-D Parts



*Traction Unit with Yanmar Engine - Model 30881A  
27in Rotary Unit - Model 30834*

Item No	R&R Part No.	OEM Part No.	Description	Qty Req	Order Quantity
75	<b>R112-5270</b>	112-5270	Screw Assy - Roller Shaft	2	
76	<b>R302-5</b>	21-6010, 302-11, 302-37, 302-47, 302-5, 302-57, 302-58, 302-6, 31-0300, 32-9660, 60-0800, 62-3880, 92-4181	Fitting - Grease	2	
77	<b>R117-5141</b>	105-9820, 105-9872, 117-5141	Hydraulic Motor	1	
78	<b>R3274-7</b>	3247-7, 3274-7	Bolt - Soc HD Cap 3/8-16 x 1	2	

*Tech Note: 2002 to 2012 only:*

All original equipment manufacturers names and part numbers are used for identification purposes only, and we are in no way implying that our products are original equipment parts. Prices subject to change without notice.



# Replaces Toro Groundsmaster 4500-D Parts

Traction Unit with Yanmar Engine - Model 30881A  
27in Rotary Unit - Model 30834



Item No	R&R Part No.	OEM Part No.	Description	Qty Req	Order Quantity
79	<b>R453011</b>	01-166-0100, 01-166-0120, 01-166-0270, 01-166-0500, 01-166-0600, 01-166-0620, 132-4593, 2356-3, 237-12, 24-10-AD, 24-11-AD, 24-11-BD, 24-12-AD, 24-12-BD, 30-9310, 32-8190, 3256-24, 3256-3, 3256-36, 3256-4, 453011, 47-9950, 48-9220, 513458, 7-0052	Washer - Flat 3/8 SAE Y/Zinc	2	
<i>Tech Note: 2002 to 2012 only:</i>					
80	<b>R32128-49</b>	32128-49	Nut - 1/2-13 Hex Flange	6	
81	<b>R104-1051-03</b>	104-1051-03	Plate- Spindle	1	
82	<b>R127-6389</b>	115-3479, 127-6389	Deck Chamber Assy	1	
83	<b>R117-4764</b>	117-4764	Decal - Danger	2	
84	<b>R93-7818</b>	93-7818	Decal - Blade Torque	1	
85	<b>R121-3627</b>	104-1086, 121-3627	Decal - HOC	1	
86	<b>R92-5816</b>	92-5816	Bolt - Hex HD 1/2-20 x 2-1/4	1	

All original equipment manufacturers names and part numbers are used for identification purposes only, and we are in no way implying that our products are original equipment parts. Prices subject to change without notice.



# Replaces Toro Groundsmaster 4500-D Parts

Traction Unit with Yanmar Engine - Model 30881A  
27in Rotary Unit - Model 30834



Item No	R&R Part No.	OEM Part No.	Description	Qty Req	Order Quantity
87	<b>R72-9361</b>	27-1000, 27-1001, 72-9360, 72-9361	Cup - Anti-Scalp	1	
88	<b>R115-3435</b>	100-5700, 115-3435	Spindle Assy	1	
89	<b>R115-3434</b>	100-5701, 115-3434	Housing - Spindle	1	
91	<b>R10-6830</b>	10-6830, 75-9440	Stud - Wheel 1/2-20 x 1 3/4	6	
93	<b>R253-154</b>	253-154	Seal - Spindle	2	
94	<b>R92-9800</b>	69-6950, 69-6980, 92-9800	Spacer - Spindle	1	
95	<b>R100-5705</b>	100-5705	Spindle Assy	1	
96	<b>R302-62</b>	302-62	Fitting - Grease - Extended Shank	2	
97	<b>R94-2703</b>	94-2703	Plug - Plastic Spindle Housing	1	
98	<b>R237-161</b>	237-161	O-Ring	1	
99	<b>R100-5709</b>	100-5709	Nut - Special Spindle	1	
100	<b>R49-8320</b>	26-1730, 49-8320	Bearing Assy - Spindle Set	2	
<i>Tech Note: Includes Retaining Rings, Spacers, Bearings &amp; Cups:</i>					
101	<b>R108-9017</b>	108-9017, 120-3366	Bearing-Stainless	4	
102	<b>R100-5762</b>	100-5762	Spacer - Bearing Roller	2	
103	<b>R3234-24</b>	3234-24, 3234-8, 66-9301	Bolt - Hex Ser Was HD 3/8-16 x 1-1/4	3	

All original equipment manufacturers names and part numbers are used for identification purposes only, and we are in no way implying that our products are original equipment parts. Prices subject to change without notice.





# Replaces Toro Groundsmaster 4500-D Parts

*Traction Unit with Yanmar Engine - Model 30881A  
27in Rotary Unit - Model 30834*



Item No	R&R Part No.	OEM Part No.	Description	Qty Req	Order Quantity
104	<b>R105-9226</b>	105-9226	Spacer-HOC	3	
105	<b>R32128-43</b>	30-8990, 32128-43, 3290-357	Nut - Flanged Whiz - 3/8-16	6	
106	<b>R104-4641</b>	104-4641	Shim - HOC - .030	3	
107	<b>R100-5799</b>	100-5799	Shim - HOC .060	18	
108	<b>R104-1052-03</b>	104-1052-01, 104-1052-03	Bracket- HOC - Front	1	
109	<b>R80-6990</b>	80-6990	Washer - Hardened	2	
110	<b>R158</b>	32121-3	Pin - Roll 3/16 x 3/4	3	
111	<b>R105-9225</b>	105-9225	Plate Assy - HOC	3	
112	<b>R101526</b>	01-150-0970, 01-178-0620, 101526, 20-53-AGD, 321-11, 3224-8, 323-11, 323-12, 323-31, 323-4, 323-47	Bolt - Hex HD 3/8-16 x 2-1/2 GR5	2	
113	<b>R100-5797-03</b>	100-5797-01, 100-5797-03	Bracket - HOC - RH	1	
114	<b>R104-4624-03</b>	104-4624-01, 104-4624-03	Bracket - H.O.C. - LH	1	
115	<b>R327-15</b>	327-15	Bolt - Axle	2	
116	<b>R150497</b>	R7R ONLY	Washer - Fits R150495 Only	2	
117	<b>R150496</b>		Wear Sleeve - Fits R150495 Only	1	
118	<b>R1013831</b>		Shaft - 1in Stainless Steel	1	

All original equipment manufacturers names and part numbers are used for identification purposes only, and we are in no way implying that our products are original equipment parts. Prices subject to change without notice.



# Replaces Toro Groundsmaster 4500-D Parts



*Traction Unit with Yanmar Engine - Model 30881A  
27in Rotary Unit - Model 30834*

Item No	R&R Part No.	OEM Part No.	Description	Qty Req	Order Quantity
119	<b>R323-53</b>	323-53, 57-3210	Bolt - Hex HD 3/8-16 x 1-3/4	2	
120	<b>R3217-7</b>	01-188-0616, 1441, 22-13-AJD, 3217-7, 513296, 513415, 513425, 915113P	Nut - 3/8-16 Hex Plated	2	
121	<b>R400258</b>	01-150-0800, 01-178-0600, 01-178-0606, 20-45-AD, 31-0200, 31-9910, 3224-1, 323-4, 400258	Bolt - Hex HD 3/8-16 x 3/4	2	
122	<b>R104-9492-03</b>	104-9492-03	Scraper - Rear Roller	1	
123	<b>R100-5780-03</b>	100-5780-01, 100-5780-03	Deck Frame Assy	1	
124	<b>R108-9025-01</b>	108-9025-01	Baffle - Mulching - 27 in Deck	1	
125	<b>R105-1230-03</b>	105-1230-03	Plate - Scraper	2	
126	<b>R112-9902-03</b>	112-9902-03	Foot Guard Assy - LH	1	
127	<b>R112-9901-03</b>	112-9901-03	Foot Guard Assy - RH	1	
128	<b>R3274-31</b>	3274-31, 3274-68, 46-8560	Screw - Button HD Soc CS 1/4-20 x 5/8	5	
129	<b>R1013911</b>	1013911	Shaft	1	
130	<b>R117-5100</b>	117-5100	Shaft- Long - Rear Roller - Hardened	1	

All original equipment manufacturers names and part numbers are used for identification purposes only, and we are in no way implying that our products are original equipment parts. Prices subject to change without notice.