

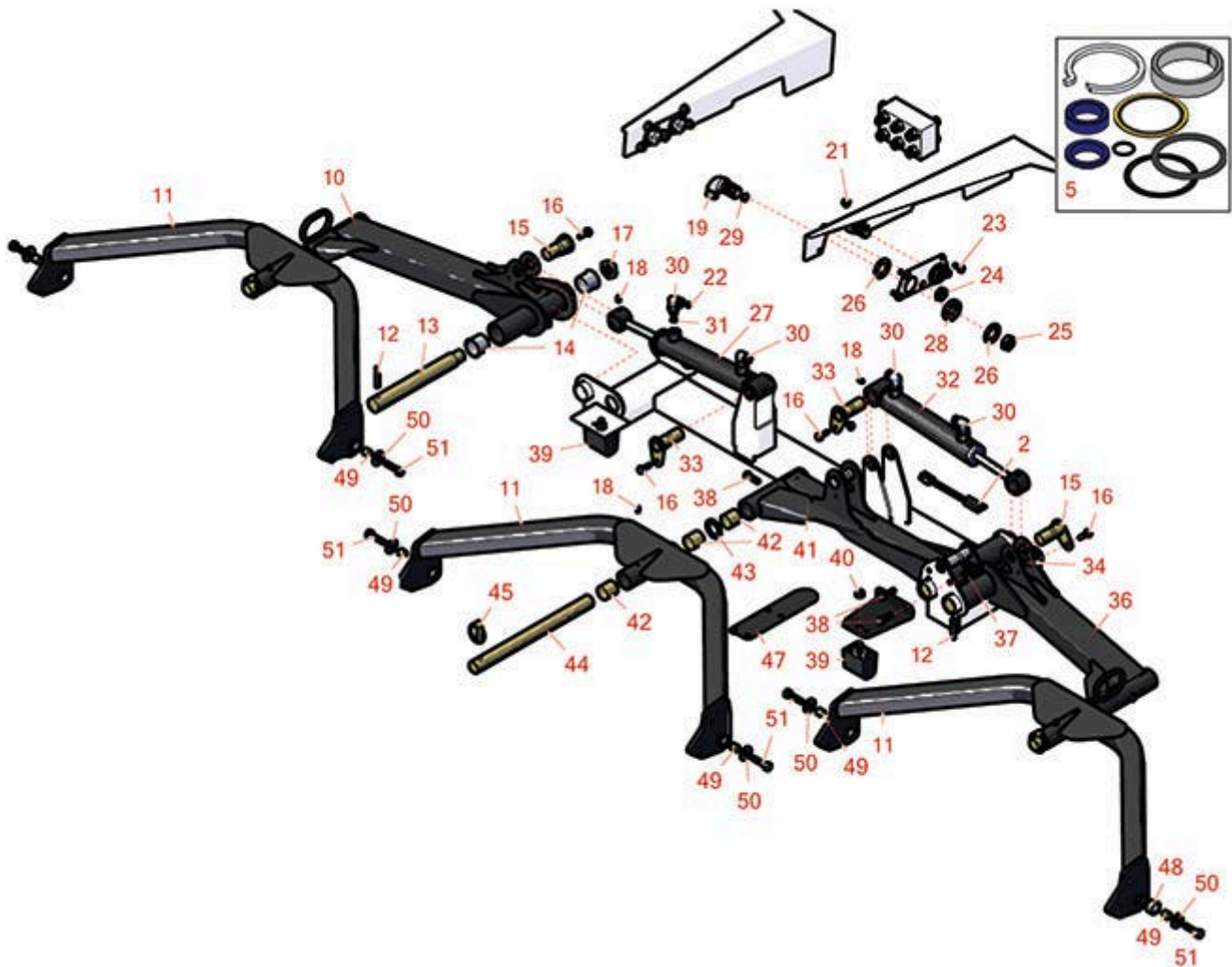


Replaces Toro Groundsmaster 4500-D

Parts

Traction Unit - Model 30893

Front Lift Arm



All original equipment manufacturers names and part numbers are used for identification purposes only, and we are in no way implying that our products are original equipment parts. Prices subject to change without notice.



Replaces Toro Groundsmaster 4500-D Parts

Traction Unit - Model 30893
Front Lift Arm



Item No	R&R Part No.	OEM Part No.	Description	Qty Req	Order Quantity
Electrical, Gauges & Controls					
2	R106-9288	106-9288, R106-9288	Sensor - Proximity	2	
Overhaul kit					
5	R107-1977	107-1977	Seal Kit	1	
<i>Tech Note: Fits R107-1980 Cylinder:</i>					
Other Parts Available					
10	R108-4034	108-4034	No. 5 Liftarm Assy	1	
11	R115-3453	104-5656, 115-3453	Carrier Frame Assy	3	
12	R32121-110	32121-110	Roll Pin - Slotted	3	
13	R95-7158	95-7158	Pin - Pivot	3	
14	R104-0015	104-0015, 104-8339	Bushing - Flanged	6	
16	R3234-29	3234-17, 3234-29	Bolt - 5/16-18x1 Serr Hex	6	
17	R3296-49	3296-49	Locknut - 1 in 14	3	
18	R302-5	21-6010, 302-11, 302-37, 302-47, 302-5, 302-57, 302-58, 302-6, 31-0300, 32-9660, 60-0800, 62-3880, 92-4181	Fitting - Grease	11	

All original equipment manufacturers names and part numbers are used for identification purposes only, and we are in no way implying that our products are original equipment parts. Prices subject to change without notice.



Replaces Toro Groundsmaster 4500-D Parts

*Traction Unit - Model 30893
Front Lift Arm*



Item No	R&R Part No.	OEM Part No.	Description	Qty Req	Order Quantity
19	R340-72	340-72, 96-0865	Fitting-Bulkhead,	1	
21	R445722	30-8980, 32128-2, 32128-20, 32128-20, 445722	Nut - Serrated Washer	8	
22	R237-22	107-8844, 237-22, 237-78	O-Ring	9	
23	R322-3	01-150-1420, 01-178-0506, 20-24-AD, 20-24-AGD, 322-3, 48-9270, 513339, 908017P	Bolt - Hex HD 5/16-18 x 3/4	8	
24	R340-70	340-70	Nut - Lock	2	
25	R340-74	340-74	Locknut - Bulkhead	5	
26	R69-9010	69-9010, 9-9010	Washer	10	
27	R107-1980	104-5528, 107-1980, 127-6427	Cylinder - Lift	1	
28	R240-3	240-3	Grommet- Rubber	5	
29	R237-65	237-65, 237.65	O-Ring	6	
30	R340-77	340-100, 340-77, 95-7889	Hydraulic Fitting	6	
31	R237-42	237-42, 31-4160	O-Ring	6	

All original equipment manufacturers names and part numbers are used for identification purposes only, and we are in no way implying that our products are original equipment parts. Prices subject to change without notice.



Replaces Toro Groundsmaster 4500-D Parts

*Traction Unit - Model 30893
Front Lift Arm*



Item No	R&R Part No.	OEM Part No.	Description	Qty Req	Order Quantity
32	R107-1979	104-5527, 107-1979, 127-6429	Cylinder - Lift	2	
33	R105-9889	105-9889, 125-1906	Cylinder Pin Assy	2	
34	R104-8300	104-8300, 104-8300 , 119-4041	Locknut - 5/16-18 Flanged Y/Zinc	3	
36	R108-4033	108-4033	No. 4 Lift Arm Assy	1	
37	R104-8301	104-8301, 104-9301, 109-6658, 133-7570	Locknut - 3/8-16 Nylon Flanged	2	
38	R400264	01-150-0180, 01-178-0610, 20-48-AD, 20-48-AGD, 32-9160, 3224-3, 323-29, 323-7, 400264, 908035P	Bolt - Hex HD 3/8-16 x 1-1/4	5	
39	R87-3470	87-3470	Bumper - Rubber	2	
40	R33025-00	32025-00, 33025-00	Locknut - 10mm x 1.5 Jam	2	
41	R108-4032	108-4032	No. 1 Liftarm Assy	1	
42	R108-4000	108-4000	Bushing	12	
43	R3-6781	3-6781	Washer - Thrust - Castor Wheel	3	
44	R136-2922	136-2922	Shaft - Pivot Carrier	3	
45	R3290-384	3290-384	Pin - Lynch Heavy Duty	3	
47	R105-9831-03	105-9831-03	Bracket- Bumper	2	

All original equipment manufacturers names and part numbers are used for identification purposes only, and we are in no way implying that our products are original equipment parts. Prices subject to change without notice.



Replaces Toro Groundsmaster 4500-D Parts

*Traction Unit - Model 30893
Front Lift Arm*



Item No	R&R Part No.	OEM Part No.	Description	Qty Req	Order Quantity
48	R105-9823	105-9823	Bushing-Carrier	6	
49	R105-9822	105-9822	Spacer	6	
50	R93-8806	93-8806	Washer-Hardened	6	
51	R323-52	323-52	Bolt - 3/8-16 x 1 3/4 Hx HD GR8	6	

All original equipment manufacturers names and part numbers are used for identification purposes only, and we are in no way implying that our products are original equipment parts. Prices subject to change without notice.