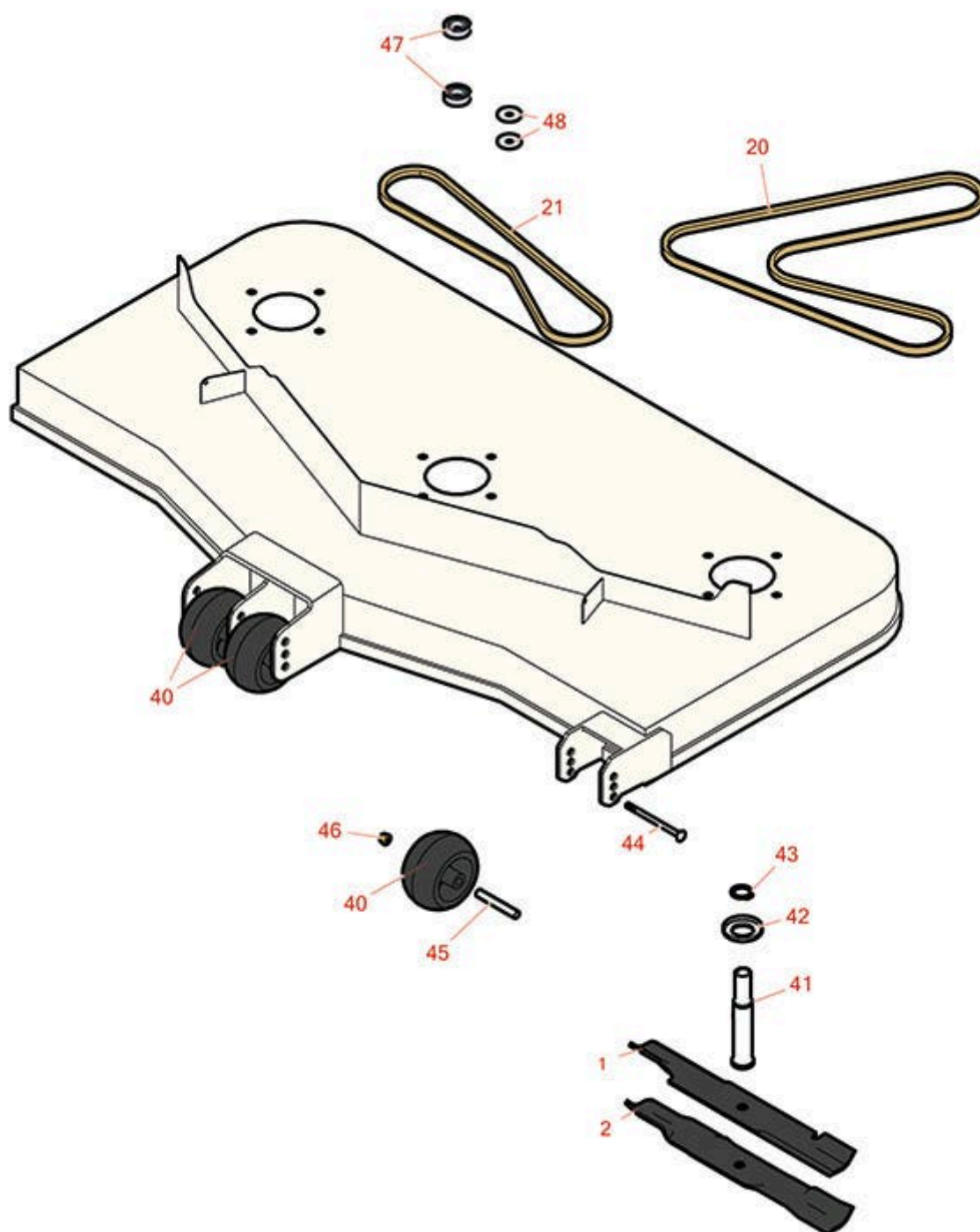




# Replaces John Deere 652M Quik-Trak Stand-On Mower Parts

Rotary Mower  
Deck Parts



All original equipment manufacturers names and part numbers are used for identification purposes only, and we are in no way implying that our products are original equipment parts. Prices subject to change without notice.



# Replaces John Deere 652M Quik-Trak Stand-On Mower Parts

Rotary Mower  
Deck Parts



Item No	R&R Part No.	OEM Part No.	Description	Qty Req	Order Quantity
---------	--------------	--------------	-------------	---------	----------------

## Blades

1	<b>RRB3065-1800</b>	TCU37208	Mower Blade - High-Lift 18 x 2.5in x 5/8 Mt Hole	3	
---	---------------------	----------	--	---	--

*Detail Description: R&R Products rotary blades are manufactured in the USA with superior alloy steel and hardened for extended life. Lifetime guaranteed against defects in material and workmanship.:*

2	<b>RRB5360-1800</b>	UC10725	Mower Blade - Wave Mulcher 18 x 2.5in x 5/8 Mt Hole	3	
---	---------------------	---------	---	---	--

## Belts

20	<b>RUC11305</b>	UC11305	Belt - V - Deck - Long	1	
21	<b>RTCUC34215</b>	TCUC34215	Belt - V - Deck - Short	1	

## Oter Prts Available

40	<b>RTCUC18744</b>	TCUC18744, UC28193	Wheel - 5 in x 2 3/4	3	
41	<b>RTCUC40290</b>	TCUC40290, UC14507	Shaft - Spindle	3	
42	<b>RTCUC40287</b>	TCUC40287, UC13505	Retainer - Grease	3	
43	<b>RC17964</b>	C17964	Ring - Retaining HD	3	
44	<b>R03M7268</b>	03M7268	Bolt - M8 x 120 Carriage 8.8	1	
45	<b>RTCUC19299</b>	TCUC19299	Axle Bushing	1	
46	<b>R14M7396</b>	14M7396	Locknut - Flanged Nyloc	1	
47	<b>RTCUC34197</b>	TCUC34197	Bearing	2	
48	<b>RTCUC37610</b>	TCUC37610	Washer	2	

All original equipment manufacturers names and part numbers are used for identification purposes only, and we are in no way implying that our products are original equipment parts. Prices subject to change without notice.