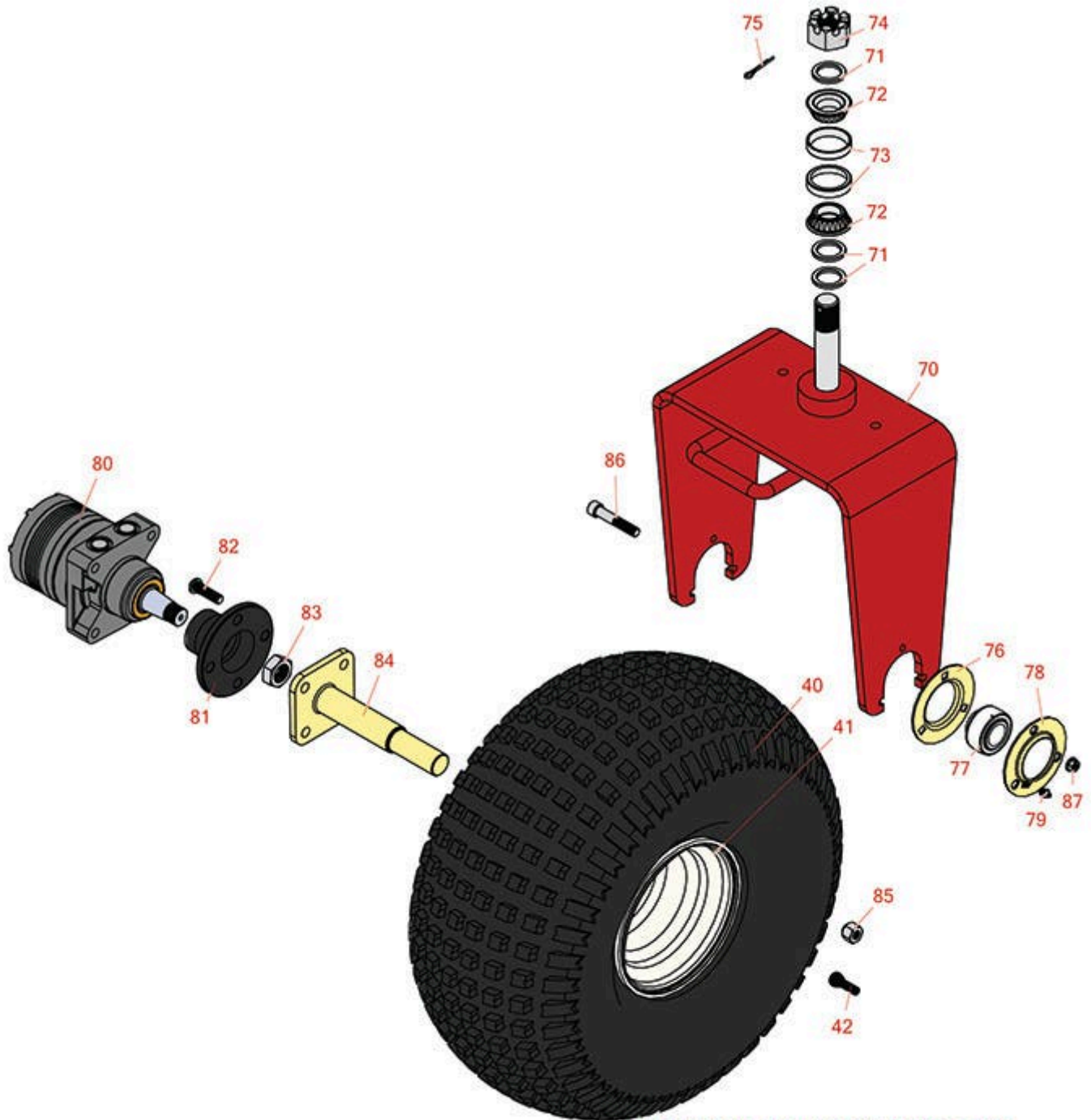




# Replaces Toro Sand Pro 5000 Parts

Traction Unit  
Front Wheel



FOR MORE TIRE SELECTIONS PLEASE  
CLICK ON THE TIRE ICON ABOVE

All original equipment manufacturers names and part numbers are used for identification purposes only, and we are in no way implying that our products are original equipment parts. Prices subject to change without notice.



# Replaces Toro Sand Pro 5000 Parts

Traction Unit  
Front Wheel



Item No	R&R Part No.	OEM Part No.	Description	Qty Req	Order Quantity
---------	--------------	--------------	-------------	---------	----------------

## Tires and Wheels

0	<b>TIRES</b>		<a href="#">Click Here to View Complete Tire Selection</a>	0	
---	--------------	--	--	---	--

40	<b>RCT537050</b>	28-1070, 85-8290	Tire - 22x11.00-8 Nhs (2 Ply) Carlisle Knobby	1	
----	------------------	---------------------	--	---	--

*Detail Description: Elevate your off-road adventures with the Carlisle Knobby tire. This tire offers a unique design with options available in both solid and dimple tread patterns. Whether you're tackling rugged trails or navigating through challenging terrain, the Carlisle Knobby tire delivers maximum performance and traction. It is specially designed for ATVs and golf carts, providing the reliability and durability you need for your outdoor adventures. Upgrade your ATV or golf cart with the Carlisle Knobby tire and experience the difference it makes in your outdoor excursions. Maximize your traction, durability, and versatility. Buy the Carlisle Knobby tire today and unleash the full potential of your off-road adventures.:*

40	<b>RTK1108-2S-I</b>		Tire - 22x11.00-8 (2 Ply) Kenda Scorpion	1	
----	---------------------	--	---	---	--

40	<b>R95-0621</b>	95-0621	Tire & Wheel - 22x11.00-8 Nhs (2 Ply) Carlisle Knobby	1	
----	-----------------	---------	--	---	--

41	<b>R94-6116</b>	114-4643, 242-53, 242-86, 46-4810, 94-6116	Rim - 8x8.5 White	1	
----	-----------------	--	-------------------	---	--

42	<b>R232-24</b>	232-24, 232-35	Stem - Valve w/ Cap	1	
----	----------------	-------------------	---------------------	---	--

## Other Parts Available

70	<b>R85-8060</b>	85-8060	Fork - Steering	1	
----	-----------------	---------	-----------------	---	--

71	<b>R18-6320</b>	18-6320	Washer - Steering Fork	3	
----	-----------------	---------	------------------------	---	--

72	<b>R254-70</b>	115-9472, 254-70	Tapered Bearing Cone - w/Seal	2	
----	----------------	---------------------	-------------------------------	---	--

73	<b>R254-61</b>	01-103-0090, 115-9471, 254-61, 92-0611, 93-4850	Cup	2	
----	----------------	---	-----	---	--

All original equipment manufacturers names and part numbers are used for identification purposes only, and we are in no way implying that our products are original equipment parts. Prices subject to change without notice.



# Replaces Toro Sand Pro 5000 Parts

Traction Unit  
Front Wheel



Item No	R&R Part No.	OEM Part No.	Description	Qty Req	Order Quantity
74	<b>R32136-9</b>	32136-9	Nut - 1-1/4-12 Slotted	1	
75	<b>R3272-37</b>	3272-37	Pin - Cotter 1/4 x 2-1/2	1	
76	<b>R85-8950</b>	85-8950	Flange - Ball Bearing	1	
77	<b>R251-352</b>	251-352	Bearing	1	
78	<b>R85-8940</b>	85-8940	Flange - w/Zerk	1	
79	<b>R302-5</b>	21-6010, 302-11, 302-37, 302-47, 302-5, 302-57, 302-58, 302-6, 31-0300, 32-9660, 60-0800, 62-3880, 92-4181	Fitting - Grease	1	
80	<b>R75-9830</b>	49-8620, 75-9830	Hydraulic Motor - Front	1	
81	<b>R93-6838-03</b>	17-4710-03, 93-6838, 93-6838-03	Hub-Wheel	1	
82	<b>R10-6830</b>	10-6830	Stud - 1/2-20 x 1 3/4	4	
83	<b>R26-3790</b>	26-3790	Nut - Hex - Wheel Motor 1-20	1	
84	<b>R92-8969</b>	18-6290, 92-8969	Spindle	1	
85	<b>R242-50</b>	242-50	Nut - 1/2-20 Wheel	4	
86	<b>R3274-93</b>	3274-74, 3274-93	Bolt - Soc HD Cap	2	

All original equipment manufacturers names and part numbers are used for identification purposes only, and we are in no way implying that our products are original equipment parts. Prices subject to change without notice.



# Replaces Toro Sand Pro 5000 Parts

*Traction Unit  
Front Wheel*



Item No	R&R Part No.	OEM Part No.	Description	Qty Req	Order Quantity
87	R3296-39	32127-25, 32128-36, 3290-357, 3296-17, 3296-22, 3296-39, 915663P, 99-7443	Locknut - 3/8-16 Nylon	3	

All original equipment manufacturers names and part numbers are used for identification purposes only, and we are in no way implying that our products are original equipment parts. Prices subject to change without notice.