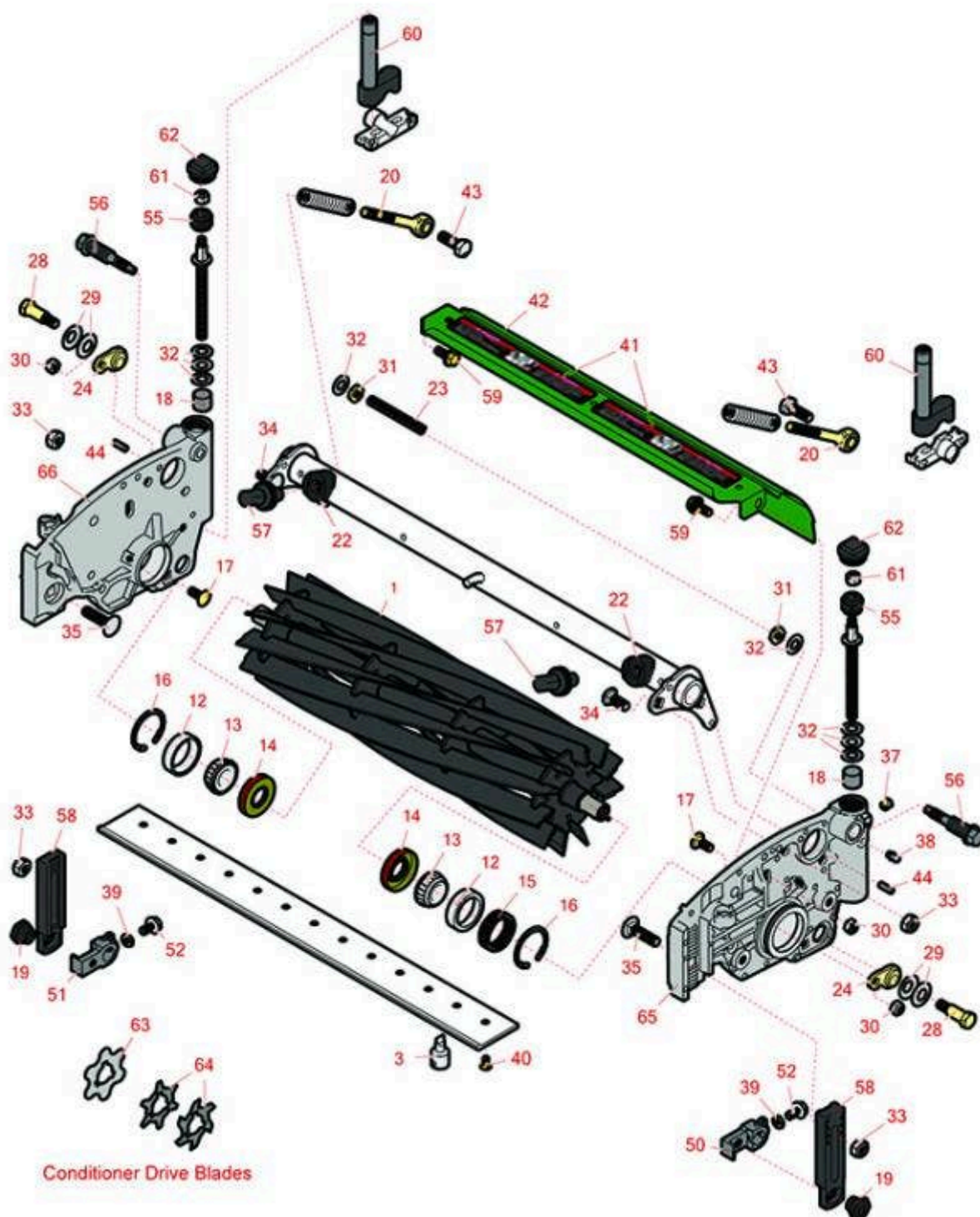




# Replaces John Deere 6080A E-Cut Hybrid Reel Mower Parts

Cutting Unit  
Reel & Bedknife



All original equipment manufacturers names and part numbers are used for identification purposes only, and we are in no way implying that our products are original equipment parts. Prices subject to change without notice.



# Replaces John Deere 6080A E-Cut Hybrid Reel Mower Parts

Cutting Unit  
Reel & Bedknife



Item No	R&R Part No.	OEM Part No.	Description	Qty Req	Order Quantity
---------	--------------	--------------	-------------	---------	----------------

## R&R Reels, Lifetime Guaranteed

1	<b>RTCA19348</b>	TCA19348	Reel - 7 Blade	1
---	------------------	----------	----------------	---

*Detail Description: R&R Reel blades are expertly crafted from premium high carbon-boron alloy steel, heat-treated to perfectly complement both R&R and OEM bedknives. Each reel undergoes precision cylindrical grinding on bearing surfaces, followed by relief grinding for optimal performance. Advanced computer balancing ensures extended reel and bearing life. Backed by our lifetime guarantee against defects in materials and craftsmanship under normal use, R&R Reels deliver unmatched durability and cutting precision you can trust.:*

1	<b>RTCA19349</b>	TCA19349	Reel - 11 Blade	1
---	------------------	----------	-----------------	---

*Detail Description: R&R Reel blades are expertly crafted from premium high carbon-boron alloy steel, heat-treated to perfectly complement both R&R and OEM bedknives. Each reel undergoes precision cylindrical grinding on bearing surfaces, followed by relief grinding for optimal performance. Advanced computer balancing ensures extended reel and bearing life. Backed by our lifetime guarantee against defects in materials and craftsmanship under normal use, R&R Reels deliver unmatched durability and cutting precision you can trust.:*

## Tool

3	<b>R101278T</b>		Bedknife Screw Driver Tool	0
---	-----------------	--	----------------------------	---

*Tech Note: Easily install and remove bed knife screws with the help of a ratchet. Tool manufactured with hardened alloy steel.:*

*Detail Description: Easily install and remove bed knife screws with the help of a ratchet. Tool manufactured with hardened alloy steel.:*

## Other Parts Available

12	<b>R254-79</b>	JD8226	Cup - Bearing	2
----	----------------	--------	---------------	---

*Detail Description: Use R254-79M installation mandrel to properly install race.:*

13	<b>R254-78</b>	JD8188	Tapered Bearing Cone	2
----	----------------	--------	----------------------	---

14	<b>RET14566</b>	ET14566	Seal - Reel	2
----	-----------------	---------	-------------	---

15	<b>RTC23880</b>	TCU23880, TCU28964	Compression Spring - Reel Bearing	1
----	-----------------	-----------------------	-----------------------------------	---

16	<b>R40M7226</b>	40M1862, 40M7226	Ring - Retaining	2
----	-----------------	---------------------	------------------	---

All original equipment manufacturers names and part numbers are used for identification purposes only, and we are in no way implying that our products are original equipment parts. Prices subject to change without notice.



# Replaces John Deere 6080A E-Cut Hybrid Reel Mower Parts

Cutting Unit  
Reel & Bedknife



Item No	R&R Part No.	OEM Part No.	Description	Qty Req	Order Quantity
17	R03M7184	03M7184	Bolt - Carriage M8	2	
18	RMT74	MT74	Bushing - Roller Bkt	2	
19	RTC28635	TCU24555, TCU28635	Eccentric	2	
20	RTC25223	TCU25223, TCU30798	Spherical Rod End	2	
22	RTC25394	TCU25394, TCU27453	Base	2	
23	RTC25398	TCU25398	Compression Spring	1	
24	RTC24334	TCU24334	Retainer	2	
28	RMT3016	MT3016	Bolt - Bed Bar	2	
29	RN168012	N168012	Washer - Spring	4	
30	RH137328	H137328	Locknut	5	
31	R14M7152	14M7152	Nut - 10mm x 1.5 Jam	2	
32	RET16679	ET16679	Washer - Spring	8	
33	R14M7517	14M7517	Locknut - 10mm x 1.5 ESNA	2	
34	R03M7191	03M7191	Bolt - Carriage M10 x 25	4	
35	R03M7194	03M7194	Bolt	2	
37	R170714	E14814	Fitting - Pressure Relief	2	
38	R302-5	JD7797, JD7842, JD7844	Fitting - Grease	2	
39	R14M7151	14M7151	Nut - Jam Roller Adj	2	
40	R101278	21M7194	Screw - Bedknife	13	

All original equipment manufacturers names and part numbers are used for identification purposes only, and we are in no way implying that our products are original equipment parts. Prices subject to change without notice.



# Replaces John Deere 6080A E-Cut Hybrid Reel Mower Parts

Cutting Unit  
Reel & Bedknife



Item No	R&R Part No.	OEM Part No.	Description	Qty Req	Order Quantity
41	RMT6517	MT6517	Label - Warning	1	
42	RTCA18643	TCA18643	Shield - (w/Labels)	1	
43	R19M7168	19M7168	Bolt - M10-1.5 x 30 mm Hex Head Class 8.8	2	
44	RR30587	30587, R30587	Pin - Dowell 1/4 Dia. x .75	4	
50	RUC18211	TCU24461, UC18211	Bracket - LH	1	
51	RUC16109	TCU24461, UC16109	Bracket - RH	1	
52	R33114-016	19M7162	Bolt - Hx HD 8mm x 1.25 x 15	2	
55	RTC40491	TCU24683, TCU40491	Worm Gear	2	
56	RTC26458	TCU26458	Worm Gear	2	
57	RUC16137	TCU24955, UC16137	Adjuster	2	
58	RUC16108	TCU24460, UC16108	Bracket	2	
59	R19M7866	19M7866	Bolt - Flanged Hex M8-1.25 x 20	2	
60	RAUC13512	AUC13512, TCA18706	Adjuster	2	
61	RM148268	M148268	Lock Nut	2	
62	RUC16102	TCU24949, UC16102	Cap	2	
63	RMT2624	MT2624	Knife - Greens Conditioner	0	
64	RET14707	ET14707	Verti-Cut Blade - .025 x 2.375	0	

All original equipment manufacturers names and part numbers are used for identification purposes only, and we are in no way implying that our products are original equipment parts. Prices subject to change without notice.



# Replaces John Deere 6080A E-Cut Hybrid Reel Mower Parts

*Cutting Unit  
Reel & Bedknife*



Item No	R&R Part No.	OEM Part No.	Description	Qty Req	Order Quantity
64	RET14707C		Verti-Cut Blade - .025 x 2.375 Carbide Tipped	0	
65	RTC35637	TCU24427, TCU35637	Panel - LH	1	
66	RTC35638	TCU24426, TCU35638	Panel - RH	1	

All original equipment manufacturers names and part numbers are used for identification purposes only, and we are in no way implying that our products are original equipment parts. Prices subject to change without notice.