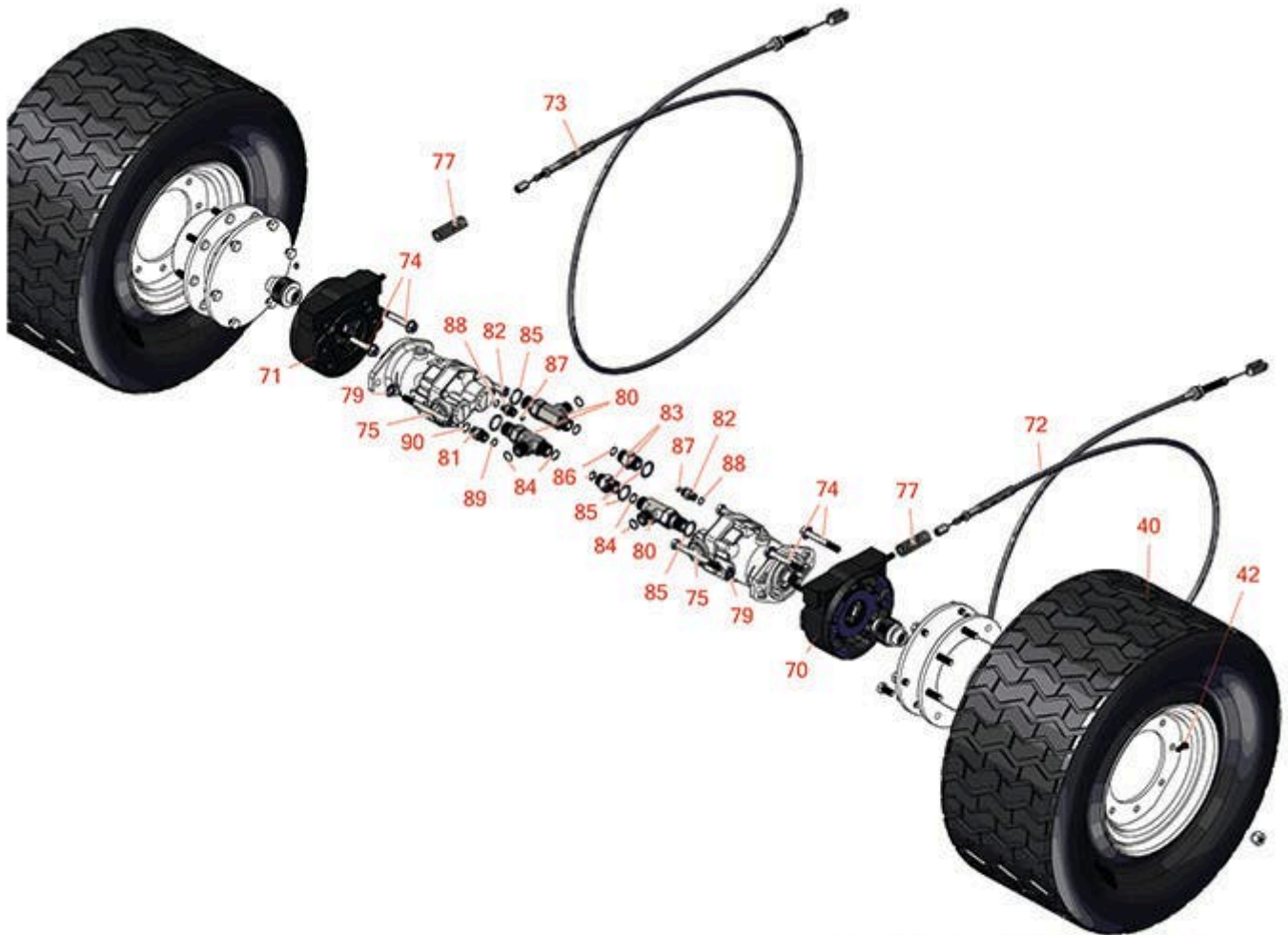




# Replaces Toro Groundsmaster 4500-D Parts

*Traction Unit with Yanmar Engine - Model 30881A  
Front Drive and Brake*



FOR MORE TIRE SELECTIONS PLEASE  
CLICK ON THE TIRE ICON ABOVE.

All original equipment manufacturers names and part numbers are used for identification purposes only, and we are in no way implying that our products are original equipment parts. Prices subject to change without notice.



# Replaces Toro Groundsmaster 4500-D Parts

Traction Unit with Yanmar Engine - Model 30881A  
Front Drive and Brake



Item No	R&R Part No.	OEM Part No.	Description	Qty Req	Order Quantity
<b>Tires &amp; Wheels</b>					
40	<b>RCT5293E6</b>		Tire - 29x14.00-15 Nhs (6 Ply) Carlisle Ultra Trac	2	
42	<b>R232-27</b>	232-27, 232-31	Stem - Valve w/ Cap	2	
<b>Other Parts Available</b>					
70	<b>R100-3070-03</b>	100-3070-03	Brake Assy - LH	1	
71	<b>R100-3069-03</b>	100-3069-03	Brake Assy - RH	1	
72	<b>R92-7530</b>	92-7530	Brake Cable Assy - LH	1	
73	<b>R92-7529</b>	92-7529	Brake Cable Assy - RH	1	
74	<b>R33106-090</b>	33106-090	Bolt - M12-1.75 x 90 Fl Hex HD Gr 8.8	4	
75	<b>R33116-120</b>	33116-120	Bolt - M12-1.75 x 120mm Hx HD	4	
77	<b>R94-3088</b>	94-3088	Spring - Compression	2	
79	<b>R3256-26</b>	01-166-0540, 01-166-0820, 17-2530, 24-13-BD, 30-8570, 3256-26, 356206, 48-9390	Washer - 1/2 in	4	
80	<b>R340-148</b>	340-148	Fitting-Tee	3	
81	<b>R340-4</b>	340-4	Hydraulic Fitting - Male Connector	1	
82	<b>R340-2</b>	340-2, 60-1920	Hydraulic Fitting - Striaight	2	
83	<b>R340-8</b>	340-8	Adapter	2	
84	<b>R237-58</b>	237-58	O-Ring	6	

All original equipment manufacturers names and part numbers are used for identification purposes only, and we are in no way implying that our products are original equipment parts. Prices subject to change without notice.



# Replaces Toro Groundsmaster 4500-D Parts

*Traction Unit with Yanmar Engine - Model 30881A  
Front Drive and Brake*



Item No	R&R Part No.	OEM Part No.	Description	Qty Req	Order Quantity
85	<b>R237-81</b>	237-81, 237.81, 327-81	O-Ring	5	
86	<b>R237-65</b>	237-65, 237.65	O-Ring	2	
87	<b>R237-22</b>	107-8844, 237-22, 237-78	O-Ring	2	
88	<b>R237-42</b>	237-42, 31-4160	O-Ring	2	
89	<b>R237-30</b>	23-6320, 237-30	O-Ring - Seal	1	
90	<b>R237-79</b>	237-79	O-Ring	1	

All original equipment manufacturers names and part numbers are used for identification purposes only, and we are in no way implying that our products are original equipment parts. Prices subject to change without notice.